

MUSIC | AUDIO POST | VIDEO | FILM



MC Control

professional control surface

MC Mix

professional control surface



EuCon Application Setup Guide

Document Revision: E

Artist Series

professional control surfaces

MC Control, MC Mix, Studio Monitor Express, Studio Monitor Pro, EuControl, EuCon and EuCon Powered are trademarks of Euphonix Inc. All other product names are trademarks of their respective manufacturers.

Table of Contents

Section 1:	Introduction	5
Section 2:	Logic Pro	5
Section 3:	Nuendo	6
	3.1 EuCon Device Setup	7
	3.1.1 EuConized channel types	9
	3.1.2 Global Settings.....	9
Section 4:	Cubase	11
	4.1 EuCon Device Setup	12
	4.1.1 EuConized channel types	13
	4.1.2 Global Settings.....	13
Section 5:	Mackie Control	15
	5.1 Setting Up EuCon for Mackie Control	15
	5.2 Final Cut Pro and Soundtrack Pro.....	18
	5.3 Digital Performer	20
	5.4 Ableton Live	22
Section 6:	Pro Tools (HUI)	24
	6.1 Setting up EuCon to Control Pro Tools	24
	6.2 Setting up Pro Tools to Control the Artist Series	26

Section 1: Introduction

The *EuCon Application Setup Guide* helps you setup EuControl to work with your specific application. EuControl must be installed before proceeding to your application's section in this Guide. See the *Installation* section in the Quickstart or User Guides to install EuControl if you have not already done so.

Section 2: Logic Pro

Logic Pro 8 works with your Artist Series control surface with very little additional setup. Make sure the MC Mix and/or MC Control software is installed and that EuControl is running. Launch Logic Pro and click in a Logic window so it is the front-most application. Your surface now controls Logic Pro.

To make sure your Artist Series control surface works correctly with Logic Pro:

1. In Logic Pro, choose **Logic Pro -> Preferences -> Control Surfaces -> Setup...**
The Logic Control Surface Setup window appears.

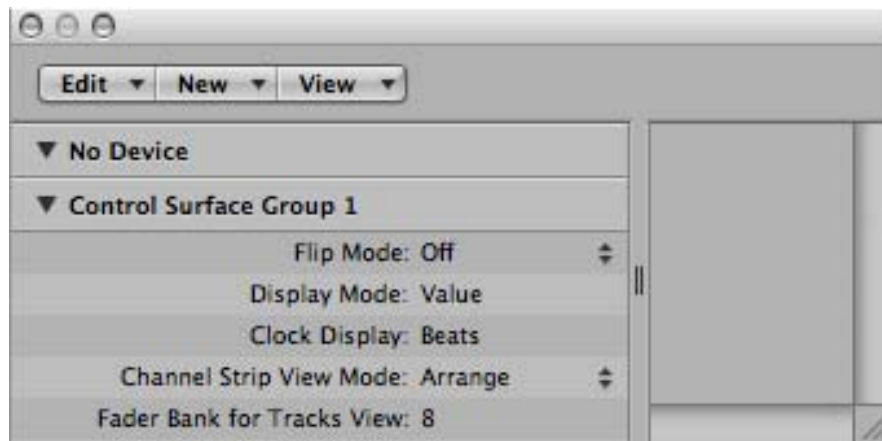


Figure 2-1 Logic Control Surface Setup window

2. In **Control Surface Group 1** on the left side of the window, locate **Channel Strip View Mode** (fourth parameter from top).
3. Set this parameter to **Arrange**, not one of the other settings.

Use **Software Update** so your Mac stays updated the latest version of Logic Pro.

Section 3: Nuendo

Nuendo 4 is a powerful DAW that can handle as many tracks and effects as your workstation's CPU can support. It offers multitrack recording, editing, and monitoring. Steinberg's EuCon adapter enables fully integrated control of all of Nuendo's functions from the Artist Series control surfaces.

NOTE: *The EuCon Adapter is available in MC Mix version 1.0.1 and later. This version of the adapter works with Nuendo version 4.1.2 and later.*

To enable Nuendo to work with the Artist Series, you must obtain an activation code:

1. Create a user account in the MySteinberg area of Steinberg's web site.
If you already have a MySteinberg account and have already registered your version of Nuendo 4, continue with Step 4.
2. Check your email and activate your user account by clicking the link in the confirmation email.
3. Log into your MySteinberg account, click on **Product Registration**, choose **Register Product** and select **Product with Steinberg Key or Soft-eLicenser**.
4. Log into your MySteinberg account if you have not already. Click on **Activation & Reactivation**, choose **Euphonix Artist Series EuCon Adapter** and select **Permanent Activation**. Enter your Artist Series hardware serial number.
You will receive an email containing the activation code.
5. Launch the License Control Center (LCC) Software from the Applications folder, choose **Wizards->License Download**, enter your activation code and follow the instructions.

For Nuendo to communicate with the Artist Series devices, Nuendo's EuCon device must be added in the Device Setup dialog:

1. Open Nuendo.
2. Choose **Devices->Device Setup**.
The Device Setup dialog opens.

Artist Series

professional control surfaces

3. Click the **+** button (add) on the top-left.

A drop-down list of devices appears with **EuCon** near the top of the list.

4. Select **EuCon** from the drop-down list.

The EuCon device is added, the control surface immediately updates, the faders and knobs display track functions, and the EuCon Device Setup dialog appears (Figure 3-1).

3.1 EuCon Device Setup

This section discusses the EuCon Device Setup dialog which allows editing track assignment and transport control parameters. If the EuCon Device setup dialog is not open: From Nuendo choose **Devices->Device Setup**, then select **EuCon** from the Remote Devices folder in the *Devices* section.

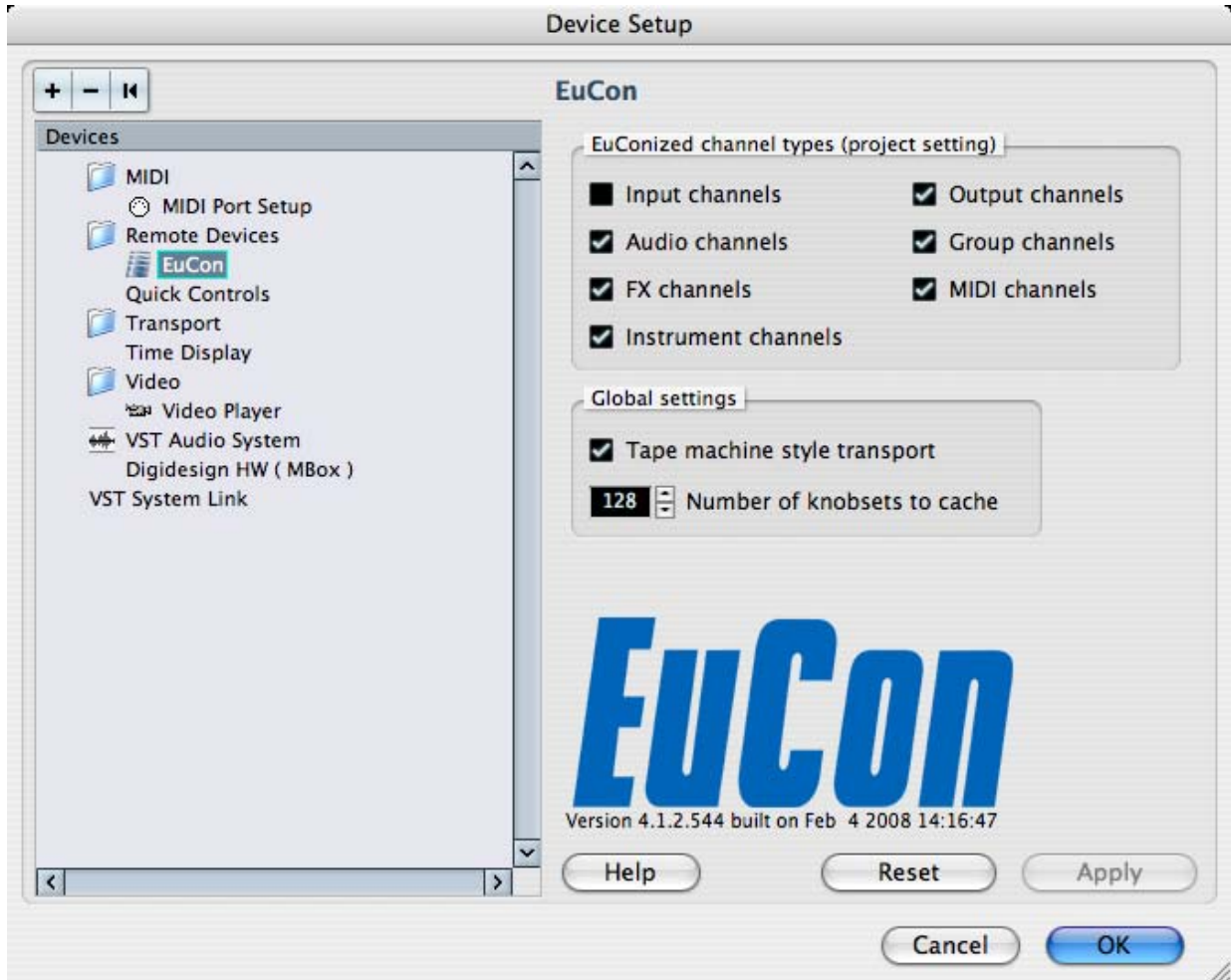


Figure 3-1 EuCon Device Setup

Artist Series

professional control surfaces

3.1.1 EuConized channel types

The *EuConized channel types* section contains checkboxes that determine which channel types appear on your control surface. If a certain channel is available in Nuendo and the corresponding checkbox is selected, that channel can be selected to appear on the surface. This channel is called *EuConized*.

All channels except Input channels are EuConized by default and can appear on the surface. This is useful to eliminate tracks from the surface, reduce memory usage, and reduce the time needed to build the EuCon mixer model when connecting, adding, or removing tracks from the Nuendo project.

To enable/disable EuConized tracks, select the checkbox next to each type. Tracks without a checkmark do not appear on the surface. This setting applies only to the open project.

3.1.2 Global Settings

The *Global Settings* section has two parameters: **Tape machine style transport** and **Number of knobsets to cache**.

Tape machine style transport

Two Nuendo transport control modes are available for the control surface. Toggle the modes from the **Tape machine style transport** option.

These transport modes affect the operation of the Stop, Fast Forward and Rewind buttons in the following manner:

Tape machine style transport checked

Stop: The control surface **STOP** button halts the transport and keeps the play head at the current position (even multiple presses), independent from Nuendo's preferences.

Fast Forward/Rewind: The **FF/RW** buttons always latch independent of the control surface latch time preference. Repeatedly pressing the same **FF/RW** button has no effect. The current action can be stopped by pressing the opposite wind button, **STOP**, or **PLAY**. The **FF/RW** also stops if it reaches the beginning or end of the project.

Tape machine style transport not checked

Stop: The control surface **STOP** button copies the Nuendo stop button.

Fast Forward/Rewind: The **FF/RW** buttons function as EuCon Momentary/Latch-Switches. If the button is pressed and released quickly, the switches do NOT latch but behave momentarily, resembling the way these buttons work in the Nuendo GUI. If the Artist Series **FF/RW** buttons are held down longer than the latch time set in the Preferences-Setup page, they latch.

Number of knobsets to cache

Nuendo creates knobsets for EQ, Dynamic, Inserts, Aux sends and other functions. A certain number of these knobsets are kept, or cached, in RAM. For large projects on a large control surface, increasing the number of knobsets in the cache can access them faster but uses more RAM. It is rare to change this value.

Section 4: Cubase

NOTE: *Cubase is supported in MC Mix version 1.0.1 and higher. Cubase version 4.1.2 and higher is required. Download the latest version of Cubase from Steinberg's web site.*

To enable Cubase to work with the Artist Series, you must obtain an activation code:

1. Create a user account in the MySteinberg area of Steinberg's web site.
If you already have a MySteinberg account and have already registered your version of Cubase 4, continue with Step 4.
2. Check your email and activate your user account by clicking the link in the confirmation email.
3. Log into your MySteinberg account, click on **Product Registration**, choose **Register Product** and select **Product with Steinberg Key or Soft-eLicenser**.
4. Log into your MySteinberg account if you have not already. Click on **Activation & Reactivation**, choose **Euphonix Artist Series EuCon Adapter** and select **Permanent Activation**. Enter your Artist Series hardware serial number.

You will receive an email containing the activation code.

5. Launch the License Control Center (LCC) Software from the Applications folder, choose **Wizards->License Download**, enter your activation code and follow the instructions.

For Cubase to communicate with the Artist Series devices, Cubase's EuCon device must be added in the Device Setup dialog:

1. Open Cubase but do not open a project.
If Cubase automatically opens a project, close it.
2. Choose **Devices->Device Setup**.

The Device Setup dialog opens.

3. Click the **+** button (add) on the top-left.

A drop-down list of devices appears with **EuCon** near the top of the list.

4. Select **EuCon** from the drop-down list.

The EuCon device is added, the control surface immediately updates, the faders and knobs display track functions, and the EuCon Device Setup dialog appears (Figure 4-1).

4.1 EuCon Device Setup

This section discusses the EuCon Device Setup dialog which allows editing track assignment and transport control parameters. If the EuCon Device setup dialog is not open: From Cubase choose **Devices->Device Setup**, then select **EuCon** from the Remote Devices folder in the *Devices* section.

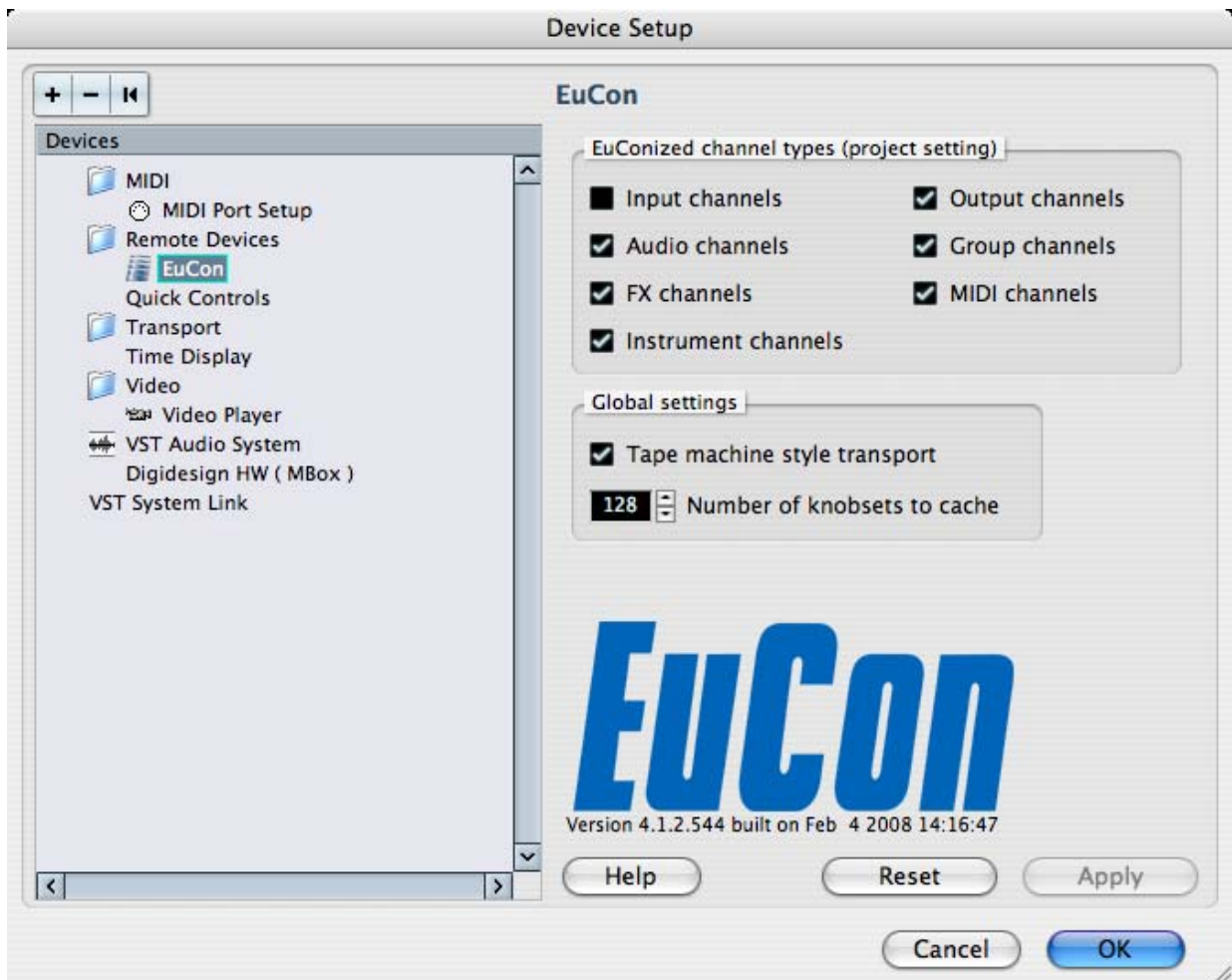


Figure 4-1 EuCon Device Setup

Artist Series

professional control surfaces

4.1.1 EuConized channel types

The *EuConized channel types* section contains checkboxes that determine which channel types appear on your control surface. If a certain channel is available in Cubase and the corresponding checkbox is selected, that channel can be selected to appear on the surface. This channel is called *EuConized*.

All channels except Input channels are EuConized by default and can appear on the surface. This is useful to eliminate tracks from the surface, reduce memory usage, and reduce the time needed to build the EuCon mixer model when connecting, adding, or removing tracks from the Cubase project.

To enable/disable EuConized tracks, select the checkbox next to each type. Tracks without a checkmark do not appear on the surface. This setting applies only to the open project.

4.1.2 Global Settings

The *Global Settings* section has two parameters: **Tape machine style transport** and **Number of knobsets to cache**.

Tape machine style transport

Two Cubase transport control modes are available for the control surface. Toggle the modes from the **Tape machine style transport** option.

These transport modes affect the operation of the Stop, Fast Forward and Rewind buttons in the following manner:

Tape machine style transport checked

Stop: The control surface **STOP** button halts the transport and keeps the play head at the current position (even multiple presses), independent from Nuendo's preferences.

Fast Forward/Rewind: The **FF/RW** buttons always latch independent of the control surface latch time preference. Repeatedly pressing the same **FF/RW** button has no effect. The current action can be stopped by pressing the opposite wind button, **STOP**, or **PLAY**. The **FF/RW** also stops if it reaches the beginning or end of the project.

Tape machine style transport not checked

Stop: The control surface **STOP** button copies the Cubase stop button.

Fast Forward/Rewind: The **FF/RW** buttons function as EuCon Momentary/Latch-Switches. If the button is pressed and released quickly, the switches do NOT latch but behave momentarily, resembling the way these buttons work in the Nuendo GUI. If the Artist Series **FF/RW** buttons are held down longer than the latch time set in the Preferences-Setup page, they latch.

Number of knobsets to cache

Cubase creates knobsets for EQ, Dynamic, Inserts, Aux sends and other functions. A certain number of these knobsets are kept, or cached, in RAM. For large projects on a large control surface, increasing the number of knobsets in the cache can access them faster but uses more RAM. It is rare to change this value.

Section 5: Mackie Control

Mackie Control Universal is a widely used MIDI-based protocol that controls application parameters and supports metering in many DAW applications. The extent to which Mackie Control can be used depends on the specific application's implementation. The Artist Series devices use EuCon-to-Mackie Control conversion software along with a special EuCon MIDI Driver. These use internal MIDI ports to easily control these programs without external MIDI cables.

5.1 Setting Up EuCon for Mackie Control

Before proceeding, make sure you have installed and are running EuControl as described in the Installation section of your Quickstart or User Guides.

All applications that use Mackie Control must perform the following steps:

1. From the Apple Menu, open **System Preferences**.

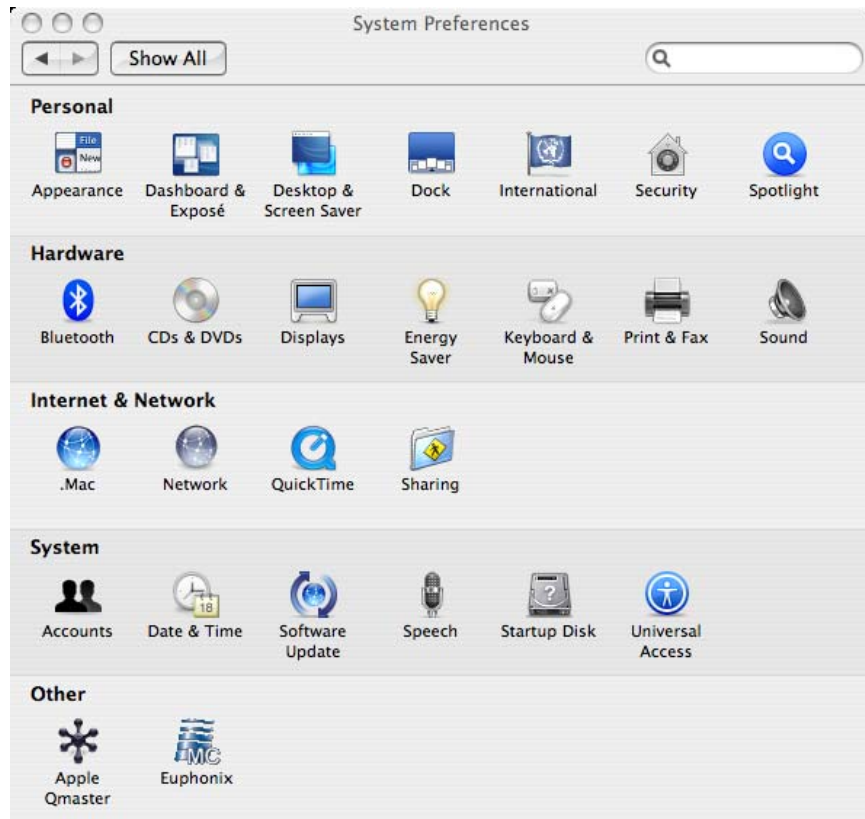


Figure 5-1 System Preferences

2. Double-click the Euphonix icon in the **Other** section at the bottom of the window.

The Euphonix preference pane opens.

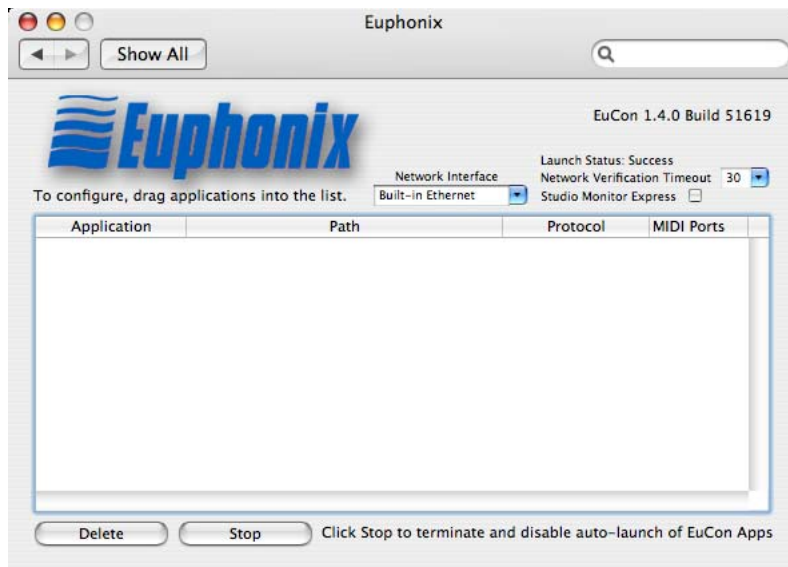


Figure 5-2 Euphonix preference pane

3. Locate the Application you want to control in the Finder.

This is found in your Applications folder or in the program's own folder at the top level of the hard drive.

4. Drag the Application icon into the middle of the Euphonix preference pane and release the mouse button.

Its name and location appears in the Application and Path columns, respectively.

5. Click in the Protocol column and select **Mackie Control** (see Figure 5-3).

Artist Series

professional control surfaces

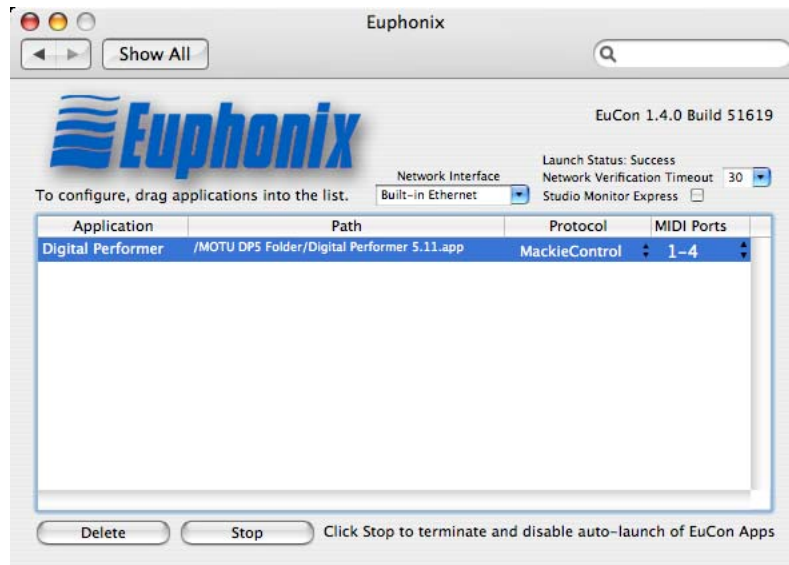


Figure 5-3 Euphonix preference pane with application selected and Mackie Control set

6. Close the Euphonix preference pane and reboot your computer if prompted to do so.

The next steps configure your specific application to be controlled by Mackie Control. This differs for each application and instructions can be found in the application's user manual. For your convenience, we've included instructions for several applications in the following sections.

When setting up an application to be controlled by Mackie Control, use the MIDI ports of the EuCon MIDI Driver that were specified in the Euphonix preference pane (i.e., 1–4 in Figure 5-3). Examples are shown in the following sections.

More than one application can be controlled using Mackie Control by dragging multiple application icons into the Euphonix preference pane. Make sure each application has its own unique set of MIDI ports.

To access the Mackie Control Master fader, press the **ASSIGN** key (lights) on any fader strip on any Artist Series control surface in the network.

5.2 Final Cut Pro and Soundtrack Pro

Configuring Final Cut Pro and Soundtrack Pro to operate with the Artist Series devices is simple. Since both are Apple applications, their interfaces are similar and instructions may be combined.

Before proceeding, you must already have completed the steps described in *Setting Up EuCon for Mackie Control* on page 15.

To finish the configuration:

1. In Final Cut Pro, choose **Tools->Control Surfaces**.
The Control Surface dialog opens.
2. In Soundtrack Pro, choose **Soundtrack Pro->Preferences**.
The Preferences dialog opens.

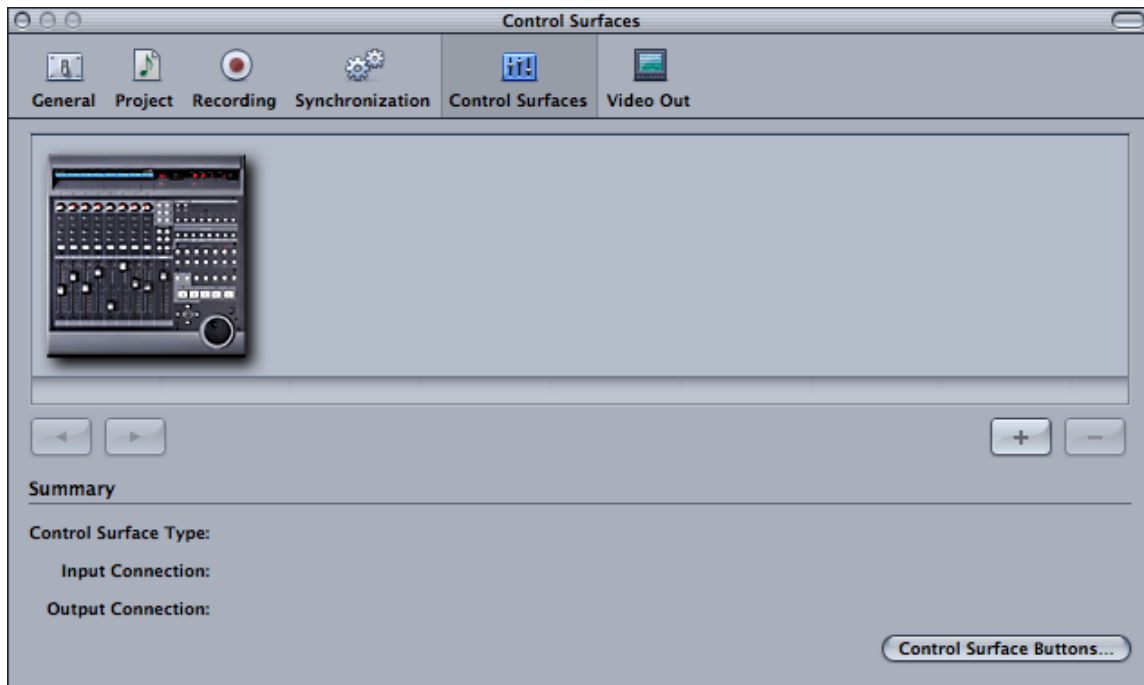


Figure 5-4 Add Control Surface dialog (Soundtrack Pro)

3. Click the **Control Surfaces** tab at the top.

Artist Series

professional control surfaces

4. Now both programs can follow the same instructions. Click the + button.
The Add Control Surface dialog opens.

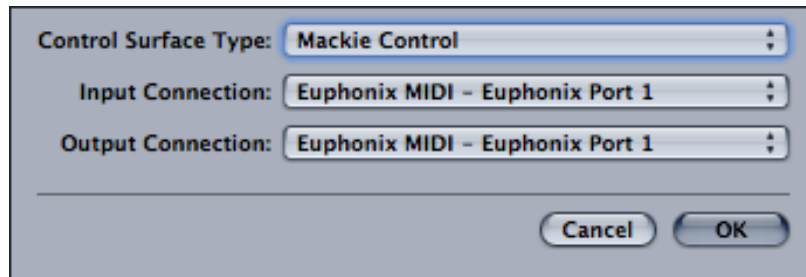


Figure 5-5 Add Control Surface dialog

5. Select **Mackie Control** from the **Control Surface Type** drop-down menu.
6. For the **Input** and **Output Connection** drop-down menus, select the MIDI send and receive ports.

These will be the same port, so if Soundtrack Pro uses ports 5–8, the first controller sends and receives on port 5.
7. Click **OK** to close the Add Control Surfaces dialog.
8. Repeat steps 4–7 for each additional Artist Series control surface in your network.
9. In Final Cut Pro, click the **OK** button. In Soundtrack Pro, click the **Close** button at the top-left to close the Preferences.

The Artist Series devices connect and update with new track information.

Your Artist Series device should now be controlling your application. If not:

- Make sure Final Cut Pro or Soundtrack Pro is the *front-most* application (i.e., the one receiving keystrokes and mouse clicks). The Artist Series devices control only the front-most application.
- Check that all steps in *Setting Up EuCon for Mackie Control* on page 15 and in this section have been performed correctly, and reboot your Mac.
- Make sure the Euphonix MIDI device in **Applications->Utilities->Audio MIDI Setup** is blue (active) and not gray (inactive). If inactive, select it, click **Remove Device**, and click **Rescan MIDI**.

5.3 Digital Performer

Before proceeding, you must already have completed the steps described in *Setting Up EuCon for Mackie Control* on page 15.

To finish the configuration:

1. Open **Applications->Utilities->Audio MIDI Setup** and select the **MIDI Devices** tab (Figure 5-6).

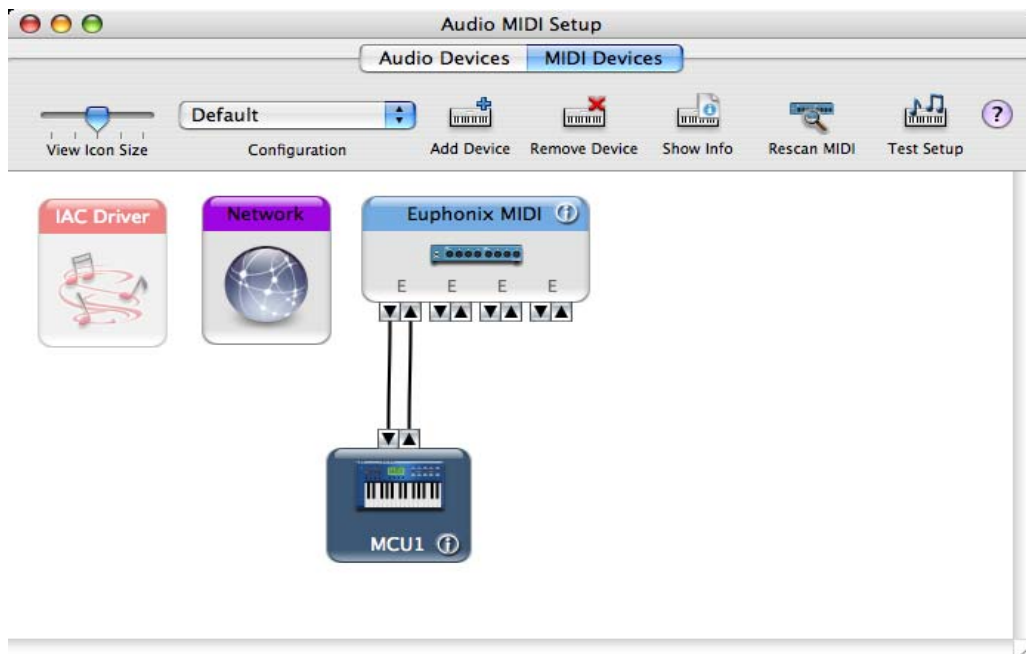


Figure 5-6 Audio MIDI Setup

2. Click **Add Device**, double-click the device that appears in the Audio MIDI Setup dialog, and assign a device name (i.e., MCU1).

There is no need to modify the manufacturer, model or any other fields.

3. Repeat the previous steps for each additional Artist Series control surface in your network.
4. In Digital Performer select **Setup->Control Surface Setup**.
5. Configure the dialog settings as they appear in Figure 5-7.

Artist Series

professional control surfaces



Figure 5-7 Control Surface dialog

6. Click the **OK** Button.

Your Artist Series device should now be controlling Digital Performer. If not:

- Make sure Digital Performer is the *front-most* application (i.e., the one receiving keystrokes and mouse clicks). The Artist Series devices control only the front-most application.
- Check that all steps in *Setting Up EuCon for Mackie Control* on page 15 and in this section have been performed correctly, and reboot your Mac.
- Make sure the Euphonix MIDI device in Audio MIDI Setup is blue (active) and not gray (inactive). If inactive, select it, click **Remove Device**, click **Rescan MIDI**, and repeat steps 2 and 3 if the Mackie Control devices are absent.

5.4 Ableton Live

Before proceeding, you must already have completed the steps described in *Setting Up EuCon for Mackie Control* on page 15.

To finish the configuration:

1. Choose **Live->Preferences**.
The Preferences dialog opens.
2. Click the MIDI tab on the left (Figure 5-8).

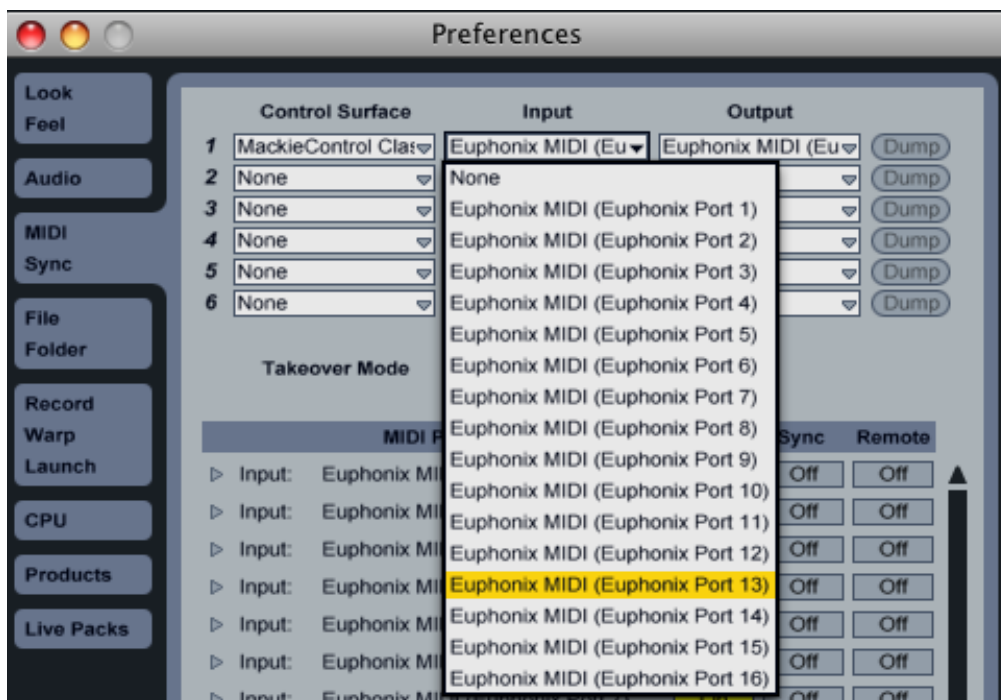


Figure 5-8 Live MIDI Preferences dialog

3. Select **Mackie Control** or **Mackie Control Classic** from the Control Surface column.
4. We recommend **Mackie Control**.
5. Select the desired MIDI emulation ports from the Input and Output columns for the Mackie Control Surface.

Artist Series

professional control surfaces

6. Repeat steps 3 and 5 for each additional Artist Series control surface in your network.

The MIDI ports selected here should match those specified in the Euphonix Preferences Pane.

7. Close the Preferences dialog.

Your Artist Series device should now be controlling your application. If not:

- Make sure Live is the *front-most* application (i.e., the one receiving key-strokes and mouse clicks). The Artist Series devices control only the front-most application.
- Check that all steps in *Setting Up EuCon for Mackie Control* on page 15 and in this section have been performed correctly, and reboot your Mac.
- Make sure the Euphonix MIDI device in **Applications->Utilities->Audio MIDI Setup** is blue (active) and not gray (inactive). If inactive, select it, click **Remove Device**, and click **Rescan MIDI**.

Section 6: Pro Tools (HUI)

HUI is a control protocol developed by Mackie that works with Pro Tools. The Artist Series uses HUI commands and extensive Pro Tools key commands to control Pro Tools operations. It has the additional advantage of being able to control multiple workstations from one surface in a studio with multiple Pro Tools systems.

6.1 Setting up EuCon to Control Pro Tools

Before proceeding, make sure you have installed and are running EuControl as described in the Installation section of your Quickstart or User Guides.

To setup HUI to control Pro Tools:

1. From the Apple Menu, open **System Preferences**.

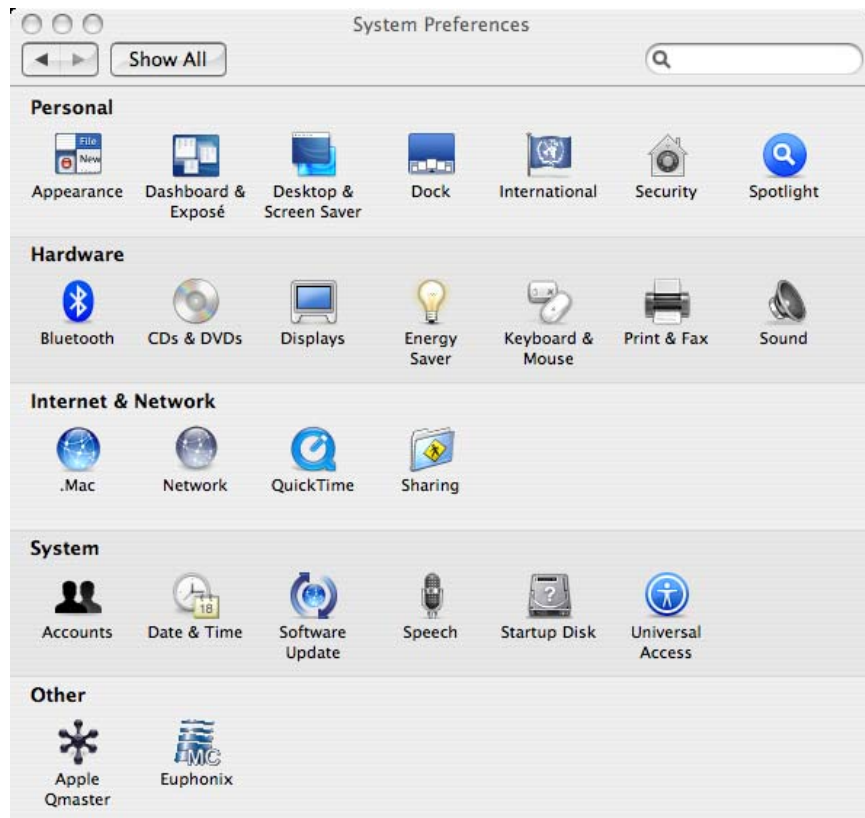


Figure 6-1 System Preferences

Artist Series

professional control surfaces

2. Double-click the Euphonix icon in the **Other** section at the bottom of the window.

The Euphonix preference pane opens.

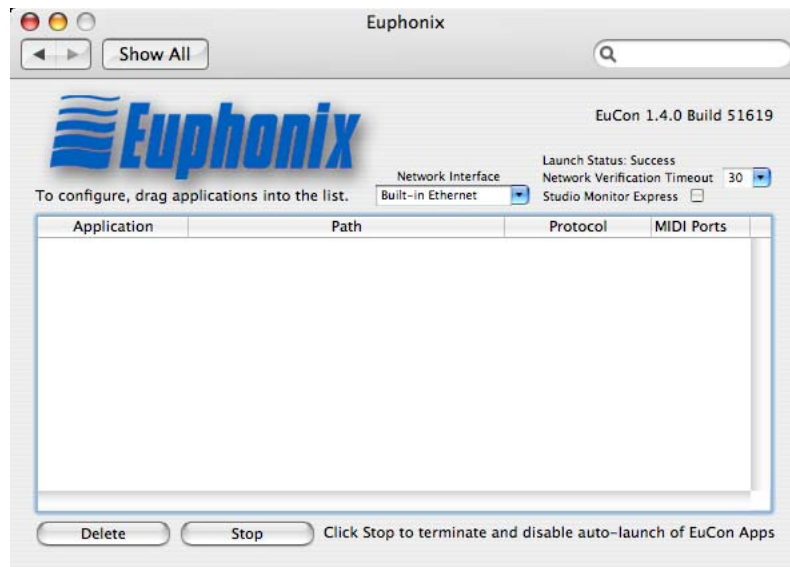


Figure 6-2 Euphonix preference pane

3. Locate the Application you want to control in the Finder.

This is found in your Applications folder or in the program's own folder at the top level of the hard drive.

4. Drag the Application icon into the middle of the Euphonix preference pane and release the mouse button.

Its name and location appears Application and Path columns, respectively.

5. Click in the Protocol column and select **HUI** (see Figure 6-3).

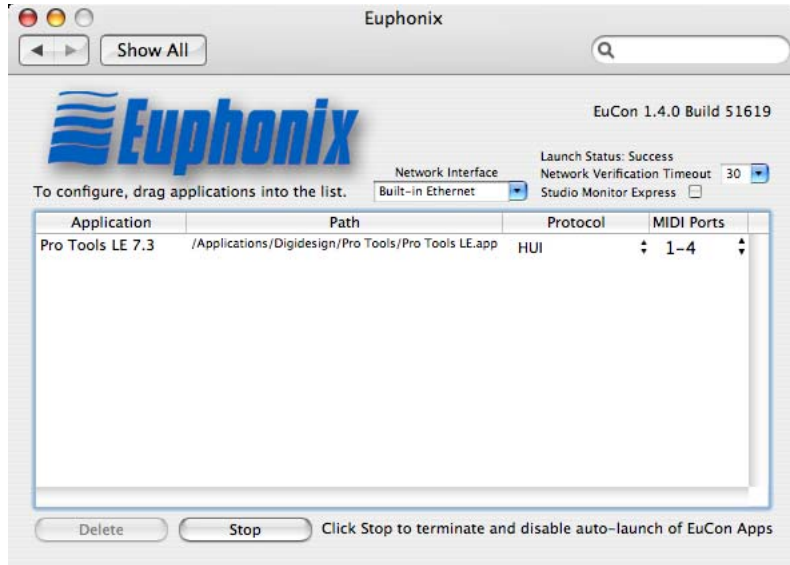


Figure 6-3 Euphonix preference pane with application selected and HUI protocol set

6. Close the Euphonix preference pane and reboot your computer if prompted to do so.

6.2 Setting up Pro Tools to Control the Artist Series

1. Launch Pro Tools.
2. Choose **Peripherals** from the Operations menu.
The Peripherals dialog opens.
3. Click the **MIDI Controllers** tab.

Artist Series

professional control surfaces

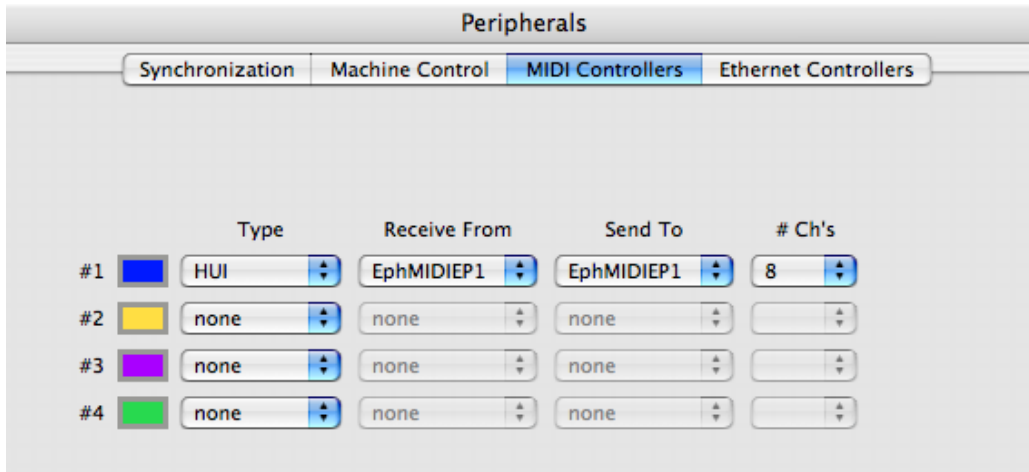


Figure 6-4 Pro Tools Peripherals dialog

4. Configure a HUI controller for each Artist series control surface in your network (up to four).
5. Select **HUI** from the **Type** drop-down box for each controller to configure.
6. Configure each controller to have the input and output MIDI ports set for Pro Tools in the Euphonix Preferences Pane. Click on the **Receive From** and **Send To** drop-down menus, hover over **Predefined**, then select from the Euphonix MIDI ports.

For example, if you set Pro Tools to use MIDI ports 1–4, your first HUI controller's receive and transmit ports should be set to **EphMIDI EP1**.

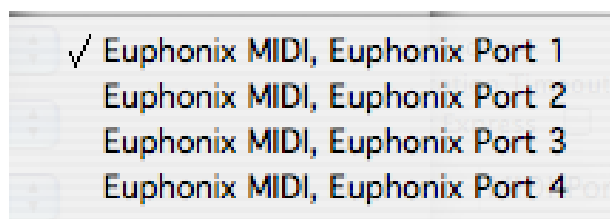


Figure 6-5 Excerpt from Pro Tools MIDI menu

Artist Series

professional control surfaces

7. Select **8** from the **Ch #** drop-down menu as the number of channels for each controller.

8. Press **OK**.

Pro Tools updates the channel and track information and transmits that to the Artist Series devices.

Your Artist Series device should now be controlling Pro Tools. If not:

- Make sure Pro Tools is the *front-most* application (i.e., the one receiving keystrokes and mouse clicks). The Artist Series devices control only the front-most application.
- Check that all steps in *Setting up EuCon to Control Pro Tools* on page 24 and in this section have been performed correctly, and reboot your Mac.

Free Manuals Download Website

<http://myh66.com>

<http://usermanuals.us>

<http://www.somanuals.com>

<http://www.4manuals.cc>

<http://www.manual-lib.com>

<http://www.404manual.com>

<http://www.luxmanual.com>

<http://aubethermostatmanual.com>

Golf course search by state

<http://golfingnear.com>

Email search by domain

<http://emailbydomain.com>

Auto manuals search

<http://auto.somanuals.com>

TV manuals search

<http://tv.somanuals.com>