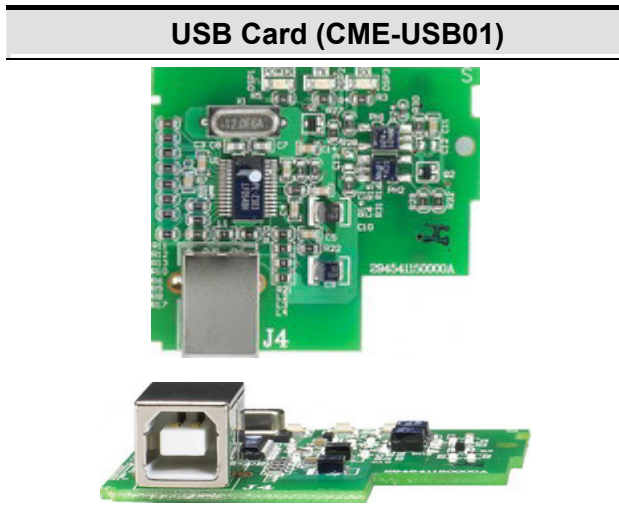


CME-USB01 USB Interface for VFD-E Series Instruction Sheet

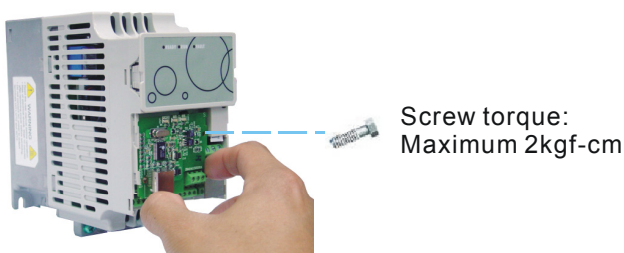
- ◆ Please thoroughly read this instruction sheet before installing option cards and putting them into use.
- ◆ The content of this instruction sheet may be revised without prior notice. Please consult our distributors or download the most updated version at <http://www.delta.com.tw/industrialautomation/>.

1 Layout

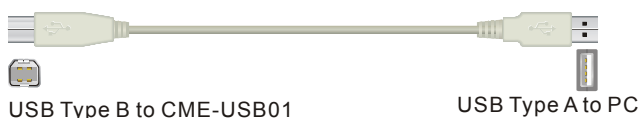


2 Installation

- Make sure that the AC Motor Drive is powered off before operation. DO NOT insert or remove the card when the AC Motor Drive is powered on.
- Please mount the extension card as shown and fix it with the screw packed with the card.



■ USB Cable



NOTE

- Refer to Chapter 5: Parameters 9 (Group 9) in the user manual for further details.

3 Specification

■ Environmental

Operating Temperature	-10°C to 50°C (non-condensing and not frozen)
Storage Temperature	-20°C to + 60°C
Ambient Humidity	Less than 90%RH (non-condensing)
Installation Altitude	Below 1000m
Vibration	Less than 20Hz: Maximum 9.81 m/s ² (1G); 20 ~ 50Hz: Maximum 5.88 m/s ² (0.6G)

NOTE

- Always use this product in a clean indoor location free from dust, corrosive gas and liquid.

■ Inputs/Outputs

Baud Rate	Supports 4800, 9600, 19200, 38400, 57600 bps.
USB Specification	USB v1.1

4 Notes

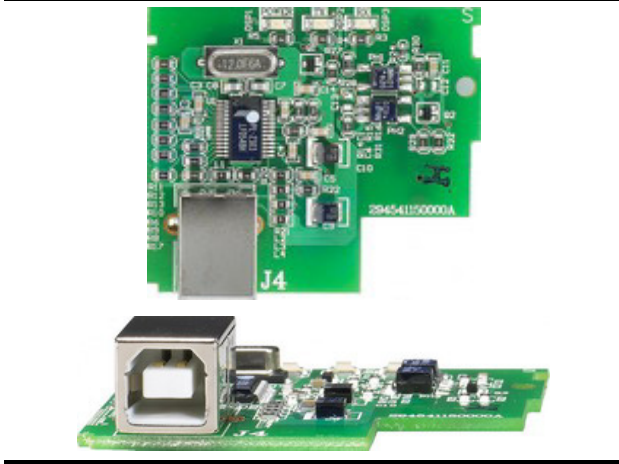
- Please use shielded wires to avoid interferences and connect the shield to ground.
- To avoid interference, route the extension card wires separately and as far away (at least 15cm) as possible from other control wires, motor wires and power wires, etc. Where these wires must cross each other, please make sure they are at a 90° angle.
- Always use and operate this product within the limit of its specifications.

CME-USB01 VFD-E 系列之 USB 介面說明書

- ◆ 請詳細閱讀下列說明後才使用本產品，以確保使用安全。
- ◆ 由於產品精益求精，當內容規格有所修正時，請洽詢代理商或至台達網站 (<http://www.delta.com.tw/industrialautomation/>) 下載最新版本。

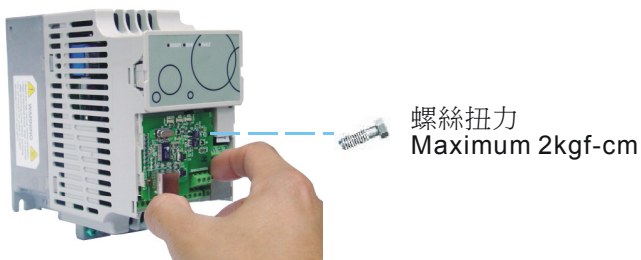
① 外觀

USB 卡 (CME-USB01)

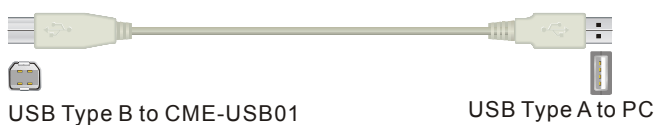


② 安裝方式

- 安裝前請確認驅動器在斷電狀態下。
- 請以下圖方式安裝擴充卡並使用包裝內的螺絲固定以避免擴充卡鬆脫。



■ USB 傳輸線



NOTE

- 詳細參數設定請參考使用手冊第五章參數，參數群 9 (Group 9) 說明。

③ 規格

■ 環境

操作溫度	-10°C to 50°C (無結露且無結凍)
儲存溫度	-20°C to + 60°C
環境溼度	90%RH 以下 (無結露)
安裝高度	低於 1000m
震動	20 Hz 以下: Maximum 9.81 m/s ² (1G); 20 ~ 50Hz: Maximum 5.88 m/s ² (0.6G)

NOTE

- 請使用此產品於無腐蝕性氣體、液體及無塵垢的室內。

■ 輸入/輸出

鮑率	支援 4800, 9600, 19200, 38400, 57600 bps.
USB 規格	USB v1.1

④ 注意事項

- 儘可能使用隔離線 (隔離層接於大地)，以避免干擾。
- 基於安規上的考量，配線請保持獨立且與其它控制線，馬達線，電源線等保持 15cm 以上距離，如有交錯的必要請保持垂直配線。
- 任何時刻的操作皆不可超過規格上的限制。

Free Manuals Download Website

<http://myh66.com>

<http://usermanuals.us>

<http://www.somanuals.com>

<http://www.4manuals.cc>

<http://www.manual-lib.com>

<http://www.404manual.com>

<http://www.luxmanual.com>

<http://aubethermostatmanual.com>

Golf course search by state

<http://golfingnear.com>

Email search by domain

<http://emailbydomain.com>

Auto manuals search

<http://auto.somanuals.com>

TV manuals search

<http://tv.somanuals.com>