



**Sound
BLASTER**

AUDIGY 2 ZS

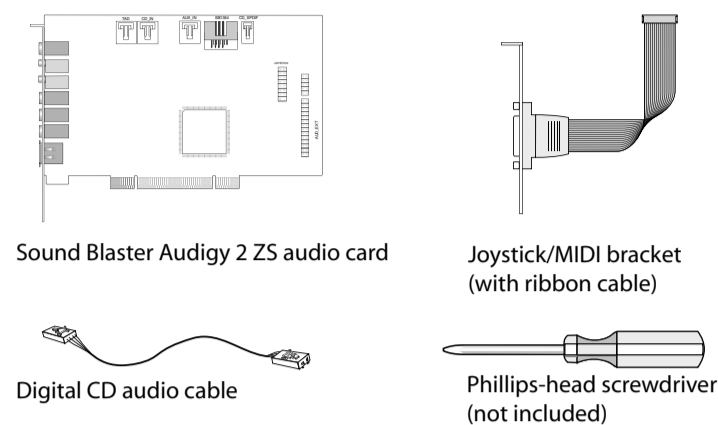
QUICK START



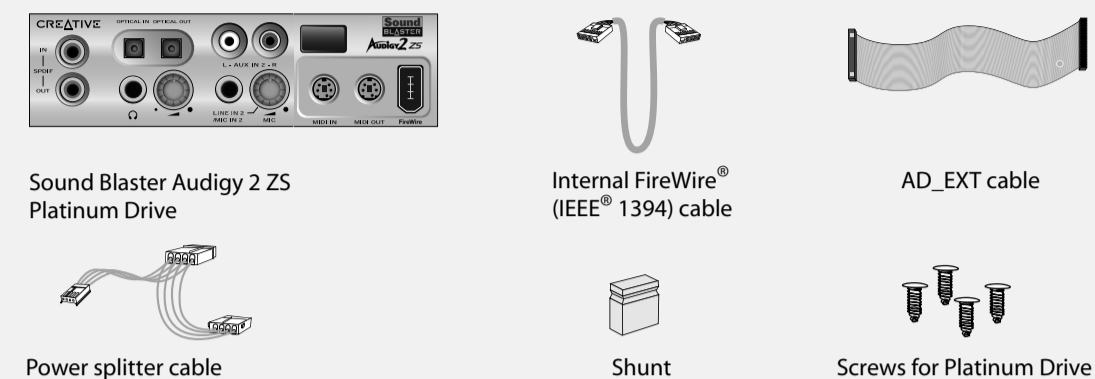
CREATIVE

SOUND BLASTER AUDIGY 2 ZS AND AUDIGY 2 ZS PLATINUM SETUP

What You Need



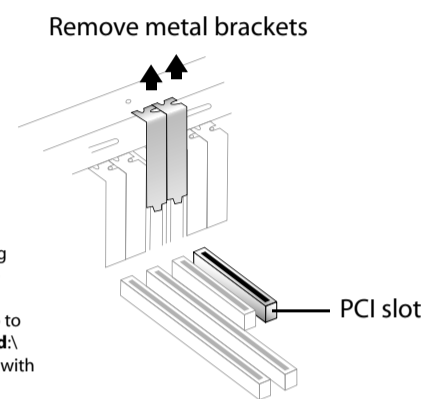
For Audigy 2 ZS Platinum only



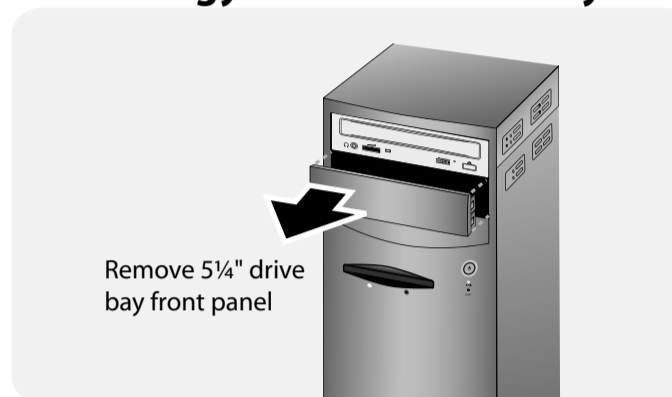
1 Preparing Your Computer

Remove any audio card in your computer and uninstall its software. Disable any on-board audio device in your computer. Turn off your computer and all peripheral devices before removing the computer cover.

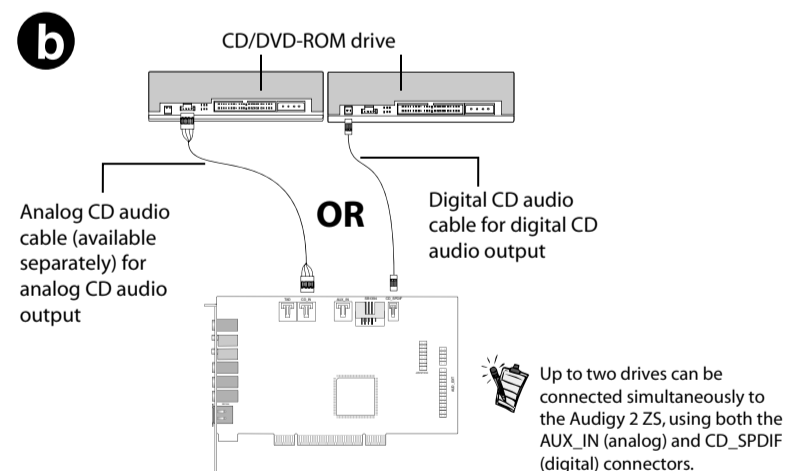
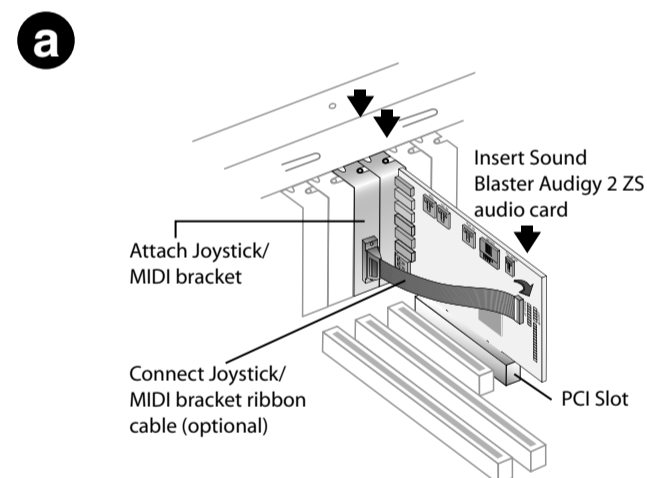
With Compact Disc Digital Audio (CDDA) extraction enabled on your computer's operating system, you do not have to use an audio cable to connect your drive to your audio card. For more information, refer to the User's Guide (on CD). Go to [d:\manual<language>\manual.chm](#) (replace d\ with your CD-ROM drive letter and <language> with the language that the document is in).



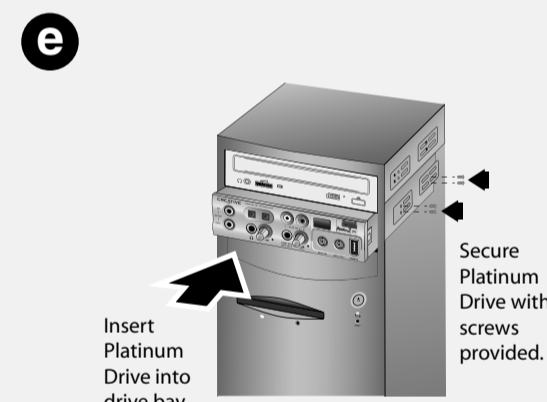
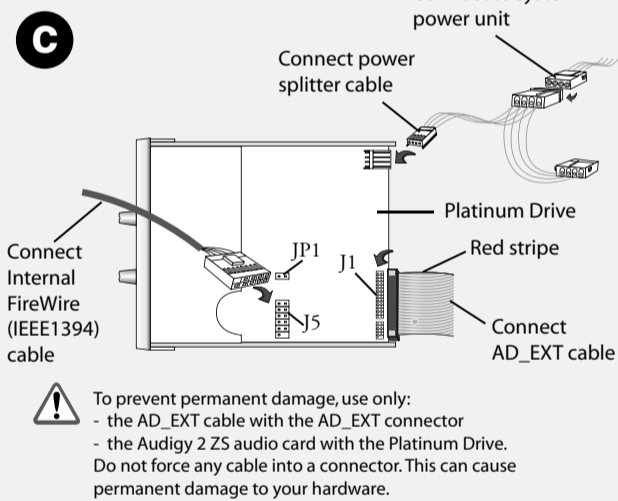
For Audigy 2 ZS Platinum only



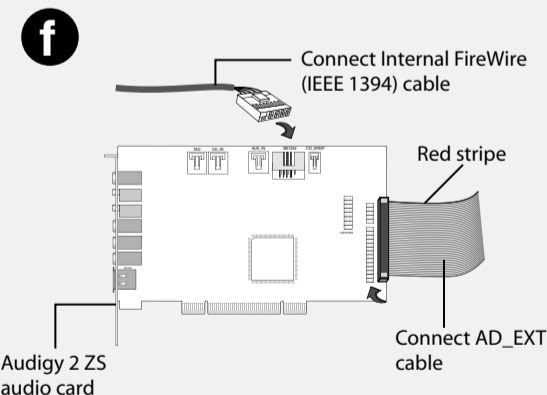
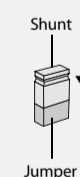
2 Installing Hardware



For Audigy 2 ZS Platinum only



Your Platinum Drive is capable of supporting both dynamic and condenser microphones. By default, your Platinum Drive is set for use with a condenser microphone. To use a dynamic microphone, fit the provided shunt onto Jumper JP1 of your Platinum Drive.



3 Installing Software

Installing Sound Blaster Audigy 2 ZS drivers and applications

- After you have installed your hardware, turn on your computer. Windows automatically detects the audio card.
- When prompted for the audio drivers, click the **Cancel** button.
- Insert the Sound Blaster Audigy 2 ZS Installation and Applications CD into your CD-ROM drive. Your CD should start automatically. If it does not, follow the steps below:
 - Double-click the **My Computer** icon. Alternatively, click **Start** → **My Computer**.
 - Right-click the CD-ROM/DVD-ROM drive icon, and then click **AutoPlay**.
- Follow the instructions on the screen to complete the installation.
- When prompted, restart your system.

Uninstalling drivers and applications
Refer to the Installing Software chapter in the User's Guide (on CD). These instructions are applicable to all Windows operating systems.

You can use Creative Diagnostics to test the software and hardware installation. Go to **Start** → **Programs** → **Creative** → **Sound Blaster Audigy 2 ZS** → **Creative Diagnostics**.

Useful Information

User's Guide (on CD)

For more information, refer to the User's Guide (on CD).
Go to **Start** → **Programs** → **Creative** → **Sound Blaster Audigy 2 ZS** → **Documentation** → **Online Manual**.

Digital output sampling rate

Make sure you select the sampling rate of the PCM SPDIF output of your Digital Out connector to match the requirements of your receiving device. The choices available are 48 kHz or 96 kHz. If you do not hear any sound from your digital speakers or experience intermittent hissing, you may need to select a lower digital output sampling rate.

To select the digital output sampling rate:

- In **Windows Control Panel**, double-click the **AudioHQ** icon.
- In the **AudioHQ** window, double-click the **Device Controls** icon.
- Click the **Sampling Rate** tab.
- In the **Digital Output Sampling Rate** list, click the required sampling rate.

For more technical updates, go to <http://www.soundblaster.com>

Free Manuals Download Website

<http://myh66.com>

<http://usermanuals.us>

<http://www.somanuals.com>

<http://www.4manuals.cc>

<http://www.manual-lib.com>

<http://www.404manual.com>

<http://www.luxmanual.com>

<http://aubethermostatmanual.com>

Golf course search by state

<http://golfingnear.com>

Email search by domain

<http://emailbydomain.com>

Auto manuals search

<http://auto.somanuals.com>

TV manuals search

<http://tv.somanuals.com>