



FIREPLACES &
FIREPITS





ENJOY THE
ALLURE OF FIRE
IN THE COMFORT OF HOME

Your backyard or garden should provide more than just daytime entertainment. When night falls and the weather cools, imagine going outside and having a warm place to enjoy the company of loved ones over beverages or simply finding quiet time to commune with nature. Cal Flame brings that reality to your home. Now you can reconnect with the outdoors and bask in the warmth and glow of an inviting fireplace or firepit. There is no better way to enjoy a cool evening than with friends and family around an open flame—and with as many choices as Cal Flame gives you, it's easy to find the style that matches your needs. With assorted firepits, choose from traditional shapes and sizes or impress guests with chair and barstool height firepit tables. All fire fixtures are natural gas and propane ready for a vibrant blaze without any clean-up. Outdoor purists will enjoy wood burning options for a traditional log fire burning in our stylish fireplaces—and our exclusive Green Heat option protects the environment. Whatever path you take to nature, Cal Flame has the outdoor fireplace and firepit to light your way.







ANATOMY OF A FIREPLACE

Cal Flame outdoor fireplaces add a sense of enchantment, magic and nostalgia to any backyard or garden. Homeowners will enjoy the beauty and dynamics that a fireplace brings to their Home Resort while guests will appreciate the year-round nighttime entertainment. Every Cal Flame fireplace is constructed to the highest standard, utilizing a 16-gauge galvanized steel frame and reinforced by Hardibacker tile backer board. Your fire fixture will be a source of elegance and entertainment for years to come.

EXTENDED CHIMNEY

Cal Flame fireplaces with the wood burning option will be constructed with an additional 18" high chimney.

BACKFLASH VENTILATION

A standard heat exhaust channels excessive heat upward instead of outward, preserving the finish of your fireplace.

FIREBOX

Fireboxes range in size, design and construction. They are available in the following designs:

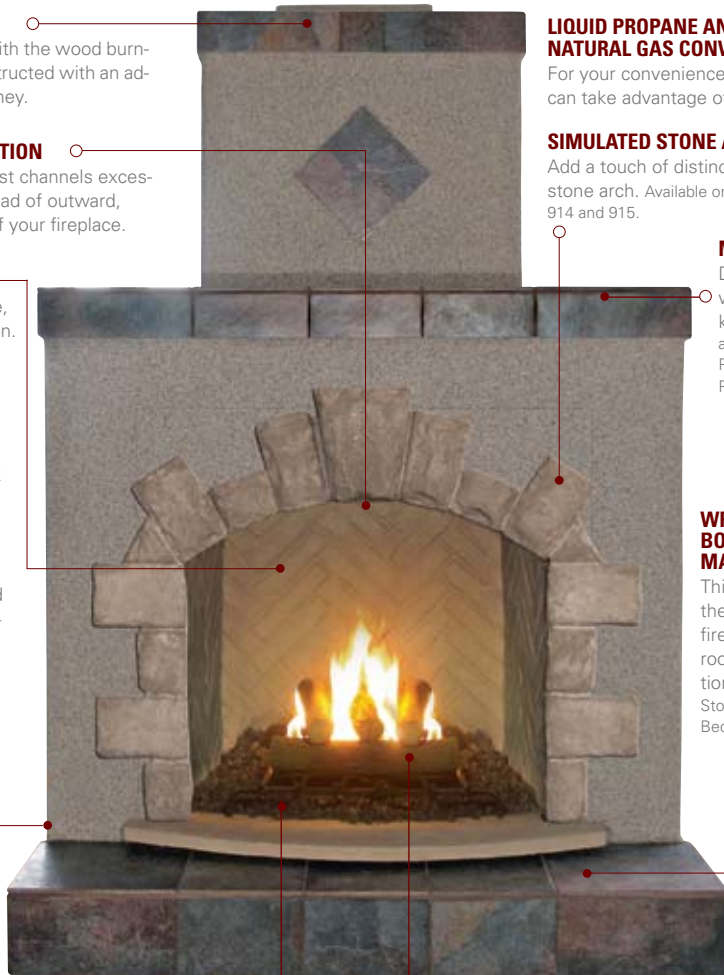
- 22-Inch: Fiberglass. Standard on 905.
- 30-Inch: Fiberglass with rounded firebox base. Standard on 906, 907, 908, 909, 910, 914 and 915.
- 36-Inch: Metal with fiberglass panels and straight firebox. Available on 906, 907, 908, 909, 910, 914 and 915.
- 42-Inch: Stainless Steel. Available wood burning option on 907, 908, 910 and 910.

ON/OFF SWITCH

Every fireplace switch utilizes a Piezo ignition system, which is a battery-powered electronic ignition.

STAINLESS STEEL BURNER

Light up the night and drive away the cold with a powerful 55,000 BTUs of heat.



GRATE

All Cal Flame fireplaces benefit from this 18-inch grate which supports either standard fire logs or real logs.

LAVA ROCKS

As a standard feature on all natural gas or liquid propane fireplaces, Lava rocks accent the base of the firebox.

FIRE LOGS

Decorative logs come standard with 22-, 30- and 36-inch fireboxes. Log sizes are measured by the front largest log in the set:

- 22-Inch Firebox: 4 logs, 16-inch. Standard on 905.
- 30-Inch Firebox: 6 logs, 18-inch. Standard on 906, 907, 908, 909, 910, 914 and 915.
- 36-Inch Firebox: 7 logs, 24-inch. Available on firebox option on 906, 907, 908, 909, 910, 914 and 915.

LIQUID PROPANE AND NATURAL GAS CONVERTIBLE

For your convenience, Cal Flame fireplaces can take advantage of your choice of fuel.

SIMULATED STONE ARCH

Add a touch of distinction with a simulated stone arch. Available on 906, 907, 908, 909, 910, 914 and 915.

MANTLE

Decorate your fireplace with your favorite knick-knacks or plants. Available in Natural Stone Tile, Porcelain Tile or Bedrock® Panel.

WRAPPED BOTTOM MANTLE

This mantle wraps around the front and sides of the fireplace creating more room for personal decorations. Available in Natural Stone Tile, Porcelain Tile or Bedrock® Panel.

EXTENDED BOTTOM MANTLE

Accent the base of your fireplace with a sophisticated extended base in front of the firebox. Available in Natural Stone Tile, Porcelain Tile or Bedrock® Panel.



FRP-905

Dimensions: L x D x H	39" x 24" x 67"
Standard Finish	Sandstone
Fire Box	24"
Burner BTU Output	55,000 BTU
18" Grate	Yes
Standard Fire Logs Set with Lava Rocks	4 Piece 16"
LP/NG Convertible*	*Yes
Ventilation	Yes
Warranty	1 year



FRP-906

Dimensions: L x D x H	48" x 28" x 53"
Standard Finish	Stucco
Fire Box	30" Fiberglass
Burner BTU Output	55,000 BTU
18" Grate	Yes
Standard Fire Logs Set with Lava Rocks	6 Piece 18"
LP/NG Convertible*	*Yes
Ventilation	Yes
Warranty	1 year



Shown with extended bottom mantel



Shown with wrapped bottom mantel



FRP-907

Dimensions: L x D x H	48" x 28" x 72"
Standard Finish	Stucco
Fire Box	30" Fiberglass
Burner BTU Output	55,000 BTU
18" Grate	Yes
Standard Fire Logs Set with Lava Rocks	6 Piece 18"
LP/NG Convertible*	*Yes
Ventilation	Yes
Warranty	1 year



FRP-908

Dimensions: L x D x H	48" x 28" x 72"
Standard Finish	Stucco
Fire Box	30" Fiberglass
Burner BTU Output	55,000 BTU
18" Grate	Yes
Standard Fire Logs Set with Lava Rocks	6 Piece 18"
LP/NG Convertible*	*Yes
Ventilation	Yes
Warranty	1 year



Shown with extended bottom mantel



Shown with wrapped bottom mantel



Shown with extended bottom mantel



Shown with wrapped bottom mantel



FRP-909

Dimensions: L x D x H	48" x 28" x 72"
Standard Finish	Stucco
Fire Box	30" Fiberglass
Burner BTU Output	55,000 BTU
18" Grate	Yes
Standard Fire Logs Set with Lava Rocks	6 Piece 18"
LP/NG Convertible*	*Yes
Ventilation	Yes
Warranty	1 year



FRP-910

Dimensions: L x D x H	48" x 28" x 72"
Standard Finish	Stucco
Fire Box	30" Fiberglass
Burner BTU Output	55,000 BTU
18" Grate	Yes
Standard Fire Logs Set with Lava Rocks	6 Piece 18"
LP/NG Convertible*	*Yes
Ventilation	Yes
Warranty	1 year



Shown with extended bottom mantel



Shown with wrapped bottom mantel



Shown with extended bottom mantel



Shown with wrapped bottom mantel



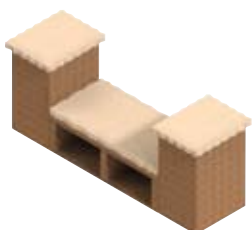
FRP-914

Dimensions: L x D x H	78" x 28" x 53"
Standard Finish	Stucco
Fire Box	30" Fiberglass with Arch
Burner BTU Output	55,000 BTU
18" Grate	Yes
Standard Fire Logs Set w/Lava Rocks	6 Piece 18"
LP/NG Convertible*	*Yes
Ventilation	Yes
Warranty	1 year



FRP-915

Dimensions: L x D x H	78" x 28" x 72"
Standard Finish	Stucco
Fire Box	30" Fiberglass with Arch
Burner BTU Output	55,000 BTU
18" Grate	Yes
Standard Fire Logs Set w/Lava Rocks	6 Piece 18"
LP/NG Convertible*	*Yes
Ventilation	Yes
Warranty	1 year



COLUMNS & BENCHES

These columns and benches have been designed as complete, standalone units that can also be placed alongside any of the Cal Flame fireplaces as complementary pieces. They are available in the same colors and finishes as the fireplaces and firepits.

COL-36S Column

Dimensions: L x D x H	18" x 24" x 36"
Standard Finish	Stucco

STB-18S Bench

Dimensions: L x D x H	52" x 24" x 18"
Standard Finish	Stucco





ANATOMY OF A FIREPIT

Whether it's a campfire in the woods, a bonfire at the beach or a firepit in the privacy of an outdoor Home Resort, people have enjoyed the relaxing and meditative properties of an open fire. Cal Flame captures that magic of fire in every firepit, which is constructed with 16-gauge galvanized steel and Hardibacker tile backer board for support and moisture resistance. Cal Flame firepits offer lasting and vibrant night-time entertainment that can't be beat.

LIQUID PROPANE OR NATURAL GAS CONVERTIBLE

Use liquid propane tanks or have a natural gas line professionally installed.

STAINLESS STEEL BURNER

The powerful burner emits 55,000 BTUs and will easily keep everyone around the firepit comfortable on a chilly night.

ON/OFF SWITCH

Every fireplace switch utilizes a Piezo ignition system, which is a battery-powered electronic ignition.



VENTILATION

Vents dissipate any gas that might get trapped and built up inside your firepit. Cal Flame cares about the safety of you and your family.

FIRE LOGS AND LAVA ROCKS

All Cal Flame firepits come equipped with a 4-piece fire log set as well as lava rocks or give your fire rustic naturalness.

TABLETOP FIRE

For the ultimate in outdoor entertainment and relaxation, tabletop firepits can accommodate up to six guests. The innovative FPT-G5000 features a two-piece glass top and elegant footrest that will add lasting beauty and variety to your Home Resort.

SHAPES

Firepits come in round, square, hexagonal (6-sided) and octagonal (8-sided) shapes to accommodate any backyard preference.

HEIGHT

Firepits are available from 18" in height to replicate the campfire experience to 36" in height to create a conversational area that will accommodate full-height barstools. The choice is yours!



FPT-R80

Dimensions: L x D x H	36" Round x 18"
Standard Finish	Sandstone
Square Fire Box	Round Tubular Burner
Burner BTU Output	55,000 BTU
Standard Fire Logs Set with Lava Rocks	4 Piece 16"
LP/NG Convertible*	*Yes
Ventilation	Yes
Warranty	1 year



FPT-S90

Dimensions: L x D x H	42" x 42" x 18"
Standard Finish	Sandstone
Square Fire Box	Round Tubular Burner
Burner BTU Output	55,000 BTU
Standard Fire Logs Set with Lava Rocks	4 Piece 16"
LP/NG Convertible*	*Yes
Ventilation	Yes
Warranty	1 year



FPT-S300

Dimensions: L x D x H	36" x 36" x 20"
Standard Finish	Stucco
Square Fire Box	Yes
Burner BTU Output	55,000 BTU
Standard Fire Logs Set with Lava Rocks	4 Piece 16"
LP/NG Convertible*	*Yes
Ventilation	Yes
Warranty	1 year



FPT-S301

Dimensions: L x D x H	48" x 48" 20"
Standard Finish	Stucco
Square Fire Box	Yes
Burner BTU Output	55,000 BTU
Standard Fire Logs Set with Lava Rocks	4 Piece 16"
LP/NG Convertible*	*Yes
Ventilation	Yes
Warranty	1 year



Shown with stone top



Shown with tile top



Shown with stone top



Shown with tile top



FPT-S302

Dimensions: L x D x H	48" x 48" x 35"
Standard Finish	Stucco
Square Fire Box	Yes
Burner BTU Output	55,000 BTU
Standard Fire Logs Set with Lava Rocks	4 Piece 16"
LP/NG Convertible*	*Yes
Ventilation	Yes
Warranty	1 year



Shown with tile top



FPT-H400

Dimensions: L x D x H	36" x 36" x 20"
Standard Finish	Stucco
Square Fire Box	Yes
Burner BTU Output	55,000 BTU
Standard Fire Logs Set with Lava Rocks	4 Piece 16"
LP/NG Convertible*	*Yes
Ventilation	Yes
Warranty	1 year



FPT-H401

Dimensions: L x D x H	48" x 48" x 20"
Standard Finish	Stucco
Square Fire Box	Yes
Burner BTU Output	55,000 BTU
Standard Fire Logs Set with Lava Rocks	4 Piece 16"
LP/NG Convertible*	*Yes
Ventilation	Yes
Warranty	1 year



Shown with tile top



Shown with tile top



FPT-H402

Dimensions: L x D x H	48" x 48" x 35"
Standard Finish	Stucco
Square Fire Box	Yes
Burner BTU Output	55,000 BTU
Standard Fire Logs Set with Lava Rocks	4 Piece 16"
LP/NG Convertible*	*Yes
Ventilation	Yes
Warranty	1 year



Shown with tile top



FPT-R1050

Dimensions: L x D x H	60" Round x 45"
Standard Finish	Ameristone Stucco with Porcelain Tile
Square Fire Box	Yes
Burner BTU Output	55,000 BTU
Standard Fire Logs Set with Lava Rocks	4 Piece 16"
LP/NG Convertible*	*Yes
Ventilation	Yes
Warranty	1 year



FPT-O1050

Dimensions: L x D x H	60" x 60" x 45"
Standard Finish	Ameristone Stucco with Porcelain Tile
Square Fire Box	Yes
Burner BTU Output	55,000 BTU
Standard Fire Logs Set with Lava Rocks	4 Piece 16"
LP/NG Convertible*	*Yes
Ventilation	Yes
Warranty	1 year



FPT-G5000

Dimensions: L x D x H	69" Round x 45"
Standard Finish	TBD
Square Fire Box	Yes
Burner BTU Output	55,000 BTU
Standard Fire Logs Set with Lava Rocks	4 Piece 16"
LP/NG Convertible*	*Yes
Ventilation	Yes
Warranty	1 year

FOR YOUR LIFE
GREEN HEAT
FOR THE PLANET

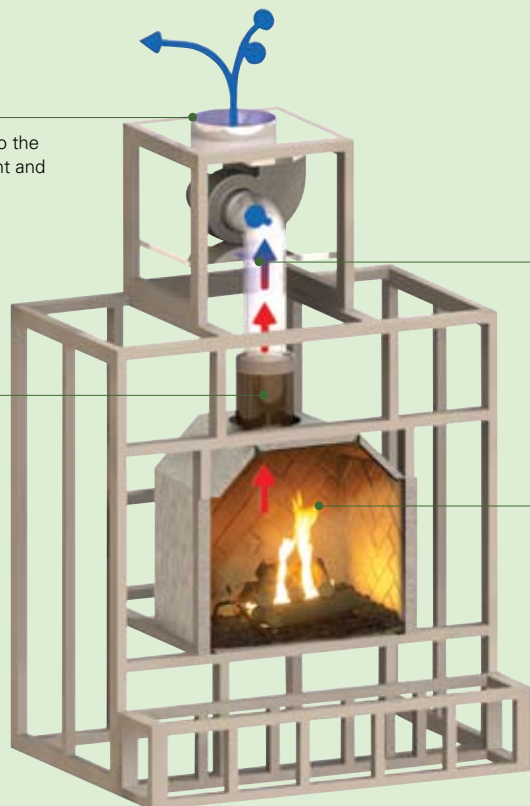
Cal Flame goes green with Green Heat technology. This unique innovation reduces emissions in burning wood and is available on Cal Flame fireplaces with the wood burning option. Other wood burning backyard fireplaces simply burn the logs and release untreated emissions into the environment. Cal Flame rectifies this ecological problem with the exclusive Emission Recovery System—or Green Heat. When the fuel is combusted, it releases its noxious by-products through the chimney, where Cal Flame engineers have installed a unique catalytic converter. A powerful fan forces the emissions through the catalyst before expelling them out the chimney. Tests show that this Green Heat system can reduce emissions by at least 25%.

EXHAUST

Cleaner smoke is released into the air—better for the environment and better for you and your family.

CATALYTIC CONVERTER

Noxious smoke passes through the Emission Reclamation System built directly into the chimney and the smoke is purified through a re-combustion process to reduce emissions.



STEEL BLOWER

A powerful fan is installed above the Emission Reclamation System to draw smoke through the catalytic converter and then expel the treated smoke after reducing emissions.

COMBUSTED WOOD SMOKE

When wood burns, it releases pollutants into the air, through the chimney. Left untreated, these fumes are harmful to the environment and your health.

Since California has the most rigorous emissions regulations in the United States, Cal Flame has partnered with the state's automotive industry to reduce emissions. Forward thinking and global responsibility has enabled Cal Flame to embrace clean air and create health-conscious products for you and your family. Experience Green Heat today!



OPTIONS & FINISHES



LED LIGHTING

Make your fireplace eye-catching even when not in use with bright LED lights that punctuate the night with beauty.

STEREO SYSTEM

Groove to your favorite tunes around the fire with this iPod-ready system and two premium stereo speakers.

ARCH DESIGN

Customize your 30" and 36" firebox arch with durable and elegant simulated stone. Arch design depends on firebox size.

36" FIREBOX

Upgrade from a standard 30" firebox to a larger 36" metal firebox that comes standard with a 7-piece 24-inch fire log set, allowing more people to enjoy the warmth.

42" WOOD BURNING FIREBOX

Select outdoor fireplaces can be converted to burn wood and automatically receive a 42" stainless steel firebox.

WRAPPED BOTTOM MANTEL

Extend the bottom mantel around the sides of your fireplace base, creating more space for decorations and plants.

EXCLUSIVE GREEN HEAT

Wood burning fireplaces can be equipped with this smoke reclamation system for cleaner and healthier emissions.



TOP FINISHES

Your fire fixture can be accented with beautiful granite, porcelain tile, natural stone tile or Bedrock.



BASE FINISHES

Integrate your fire fixture seamlessly with the other pieces of your Cal Spas Home Resort with your choice of Ameristone Stucco, Cultured Stone, brick or Bedrock® Panel options.

FIRE ON ICE - SHOWN AT LEFT & BELOW (FIREPIT ONLY)

Replace the standard fire log, grate and lava rock set with scintillating tempered glass chips that will never lose its color and is safe to the environment and your hands. We recommend mixing and matching two bags in different colors. Choose from Peridot, Sapphire, Malachite, Topaz and Onyx to create your own design!



Peridot



Sapphire



Malachite



Topaz



Onyx



COUNTERTOP CHOICES

Granite



Earth Tone

Porcelain Tile



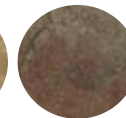
Bengali Beige



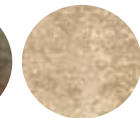
Cinque Terre Manarola



Citta Aventeno



Kenya Ruggine



Lago Nebbia



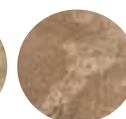
Natural Steel



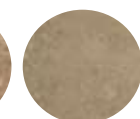
Platino Rustico



Torino Cottian



Torino Julian

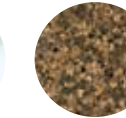


Venice Cappuccino

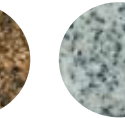
Natural Stone Tile



Arabescato Carrara



Autumn Harmony



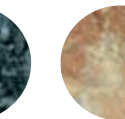
Bianco Catalina



Black Galaxy



Blue Pearl



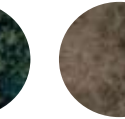
Carmella



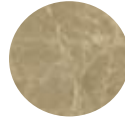
Classic Cream



Emerald Green



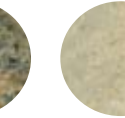
Emperador Dark



Emperador Light



Giallo Veneziano



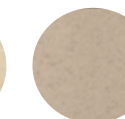
Sahara Gold

BASE CHOICES

Stucco



La Paz



Olive Brown

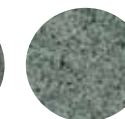


Pearl Gray

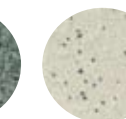
Ameristone Stucco



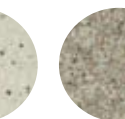
Champagne Gray



Midnite Storm



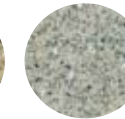
Pearl Haze



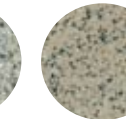
River Rock



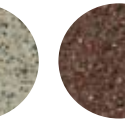
Stony Creek



White Ash



Woodbury Pink

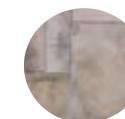


Victorian Rose

Cultured Stone



Autumn Pro-Fit Ledgestone



Bucks Country European Castle



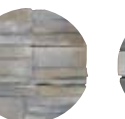
Old Used Brick



Chicago Used Cultured Brick



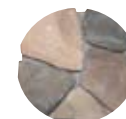
Nantucket Stacked



Calistoga Weather



Cognac Country



Manzanita Cliffstone

Printed color may vary from actual tile/stone/stucco colors and textures. Ask your dealer to view an actual sample.



Fire has always attracted people with its natural ability to warm, comfort and entertain. It is nothing short of magical. Cal Flame shares that magic with you and your family by offering the finest in outdoor fire fixtures. How many stories will you swap with friends around an open fire on a cold winter night? How many romantic evenings by the fire will you share with someone? How often will you find yourself lost in thought while a fire dances before your eyes? Capture the magic of fire today. Make every moment count with Cal Flame.

Free Manuals Download Website

<http://myh66.com>

<http://usermanuals.us>

<http://www.somanuals.com>

<http://www.4manuals.cc>

<http://www.manual-lib.com>

<http://www.404manual.com>

<http://www.luxmanual.com>

<http://aubethermostatmanual.com>

Golf course search by state

<http://golfingnear.com>

Email search by domain

<http://emailbydomain.com>

Auto manuals search

<http://auto.somanuals.com>

TV manuals search

<http://tv.somanuals.com>