

# Manual Products

## Cable Connectors, Lugs, Splicers

Issued July 2007 • SPEC MP-1.3

**Bernard Manual Welding  
Products**



### **Time Tested Performance.**

Our Manual Welding Products provide high quality with a wide range of styles, sizes and capacities to enhance your welding applications.

#### **Cable Connectors**

- Heavy-duty ball-point set screw cable connection
- Fully insulated covers for maximum safety
- Interchangeable with most popular models
- Connector locking screw designed for longer life and superior electrical connection

#### **Positive Lock Terminal Lugs**

- Lug screw designed for enhanced field repairability
- Composite copper alloys for superior conductivity
- Increased cable depth for better connections
- Fully insulated covers are heat, oil and abrasion resistant

#### **Hammer-on Cable Lugs & Splicers**

- Simple as driving a nail to attach
- No soldering, no bolting, no set screws, no crimping tools required
- Twice as heavy as most crimp-type connectors
- Same conductivity as the cable they connect

#### **Solder Type Lugs**

- Copper alloy for excellent electrical conductivity
- Flared end for easy cable access
- Stud hole size 17/32

Made with  
Pride and without  
Compromise in the **USA**

#### **Bernard®**

An Illinois Tool Works Company  
449 West Corning Road, Box 667  
Beecher, Illinois 60401 USA

Phone: 800-946-2281 (US Only) 708-946-2281 (Outside US)  
Fax: 708-946-6726  
For more information, visit us at [BernardWelds.com](http://BernardWelds.com)



# Available Manual Products

## CABLE CONNECTORS

Model:	<b>1BC</b>	<b>2-1BC</b>	<b>2BC</b>	<b>4BC</b>
Cable Sizes:	4,2,1 (35-50 mm <sup>2</sup> )	4,2,1 (35-50 mm <sup>2</sup> )	1/0, 2/0, 3/0 (50-70 mm <sup>2</sup> )	3/0, 4/0 (70-95 mm <sup>2</sup> )
Details:	1BC-F: Female 1BC-M: Male	Mates w/ 2BC-F or 4BC-F	2BC-F: Female 2BC-M: Male	4BC-F: Female 4BC-M: Male



U.S. Patent. 5,366,392

## TERMINAL LUGS

Model:	<b>B-1AF</b>	<b>B-2AF</b>
Accepts Cable Connector(s):	1BC-M	2BC-M, 4BC-M, 2-1BC



## SOLDER TYPE LUGS

Model:	<b>B-62</b>	<b>B-120</b>	<b>B-3040</b>
Cable Size:	6-2	1-2/0	3/0 and 4/0
Amperage Rating:	150	225	250
Size of Stud Hole:	17/32"	17/32"	17/32"
I.D. Cable Socket:	.461"	.559"	.660"



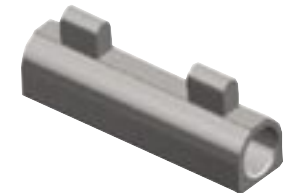
## HAMMER-ON TYPE LUGS

Model:	<b>L11</b>	<b>L22</b>	<b>L33</b>	<b>L44</b>
Cable Sizes:	3/0 and 4/0	1/0 and 2/0	2 and 1	6 thru 2
Size of Stud Hole:	21/32"	17/32"	33/64"	13/32"
I.D. Cable Socket:	5/8"	33/64"	13/32"	19/64"



## SPLICERS

Model:	<b>S11</b>	<b>S22</b>	<b>S33</b>
Cable Sizes:	3/0 and 4/0	1/0 and 2/0	2 and 1
I.D. Cable Socket:	5/8"	33/64"	13/32"



**Bernard connectors are interchangeable with these products:**

Bernard®	Tweco®	Lenco®	Jackson®
1BC*	MPC/1 MBP	LC 10	UB-1-BP
2BC*	2 MPC/2 MBP	LC 40	UD-3-BP
4BC*	4 MPC/4 MBP	LC 40 HD	UB-4-BP
2-1BC	2-1-MBP	LC 1040	UWB-BP
B-1AF	1-AF	CT-10FA	N/A
B-2AF	2-AF	CT-40FA	N/A

\*Male and Female sold separately in standard packs of two

## Free Manuals Download Website

<http://myh66.com>

<http://usermanuals.us>

<http://www.somanuals.com>

<http://www.4manuals.cc>

<http://www.manual-lib.com>

<http://www.404manual.com>

<http://www.luxmanual.com>

<http://aubethermostatmanual.com>

Golf course search by state

<http://golfingnear.com>

Email search by domain

<http://emailbydomain.com>

Auto manuals search

<http://auto.somanuals.com>

TV manuals search

<http://tv.somanuals.com>