

IMPORTANT!

This Guide refers to the following Products:



**F1DA104T
PS/2 & USB**



**F1DA108T
PS/2 & USB**



**F1DA116T
PS/2 & USB**

Pro 2 KVM Firmware Update Instructions

Please read the following carefully;

Synopsis:

This guide will assist you in updating the firmware of your Belkin OmniView Pro 2 KVM Switch.

Please be advised that firmware updates tend to be to resolve specific issues and if there is any doubt if the firmware will resolve your issue you should check with Technical Support.

Requirements:

To perform the Firmware Upgrade successfully you will need the following equipment;

- Pro 2 KVM
- 12 V DC 1A KVM Power Supply (supplied)
- RJ45-DB25 Flash Update Cable (supplied)
- PC with Windows 2000 or XP and Parallel Port
- Firmware Update File
- NTPDA Update

You will also need to ensure that any Firewall or Anti-Virus Software is disabled on the Computer you will be using to upgrade the Firmware from.

Pro 2 KVM Firmware Update Instructions

Step 1

Before proceeding with the Firmware Update you will need to ensure that the Computer being used for the update process is ready. If you are running Windows 2000 or XP you will need to install an **NT Direct Port Access Update** prior to running the Flash Update.

The **NTPDA.exe** file Update Utility can be downloaded from the same location as the Firmware Update files. Once downloaded, the file should be unzipped and the 'Setup.exe' file run in order to install. You will be prompted to reboot your system to complete the process.

Step 2

Disconnect any Computers from the KVM then power it on. Set the Dip Switches according to the Firmware about to be used. The Pro 2 KVM has four flash Dip Switches. Listed below are the appropriate dipswitch settings for each Firmware type.



MAIN |

For firmware specifically designed to resolve On-Screen Display Issues.



OSD |

For firmware specifically designed to resolve On-Screen Display Issues.



MOUSE | #1

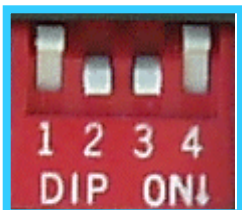
For firmware specifically designed to resolve Mouse related Issues.



KEYBOARD | #1

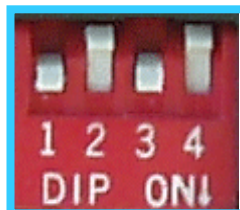
For firmware specifically designed to resolve Keyboard related Issues.

16-Port Pro 2 KVMs have two sets of Mouse and Keyboard Firmware and each needs to be flashed separately. The same Firmware is flashed twice in effect.



MOUSE | #2

For firmware specifically designed to resolve Mouse related Issues.
F1DA116T Only



KEYBOARD | #2

For firmware specifically designed to resolve Keyboard related Issues.
F1DA116T Only

Step 3

Plug the supplied Firmware Update Cable in to the (DB25) Parallel Port of a stand-alone Computer (i.e. one that is not currently connected to and controlled by the KVM) and connect the other end of the Cable into the (RJ45) Firmware Upgrade Port of the KVM.

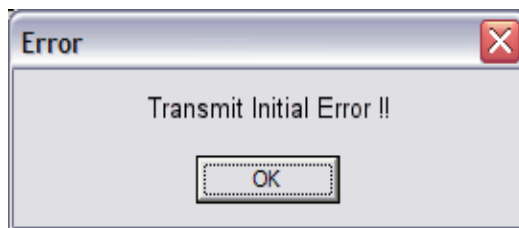
**Step 4**

Now that everything is setup the KVM can be flash upgraded. Double click the Icon of the Firmware Update File that you downloaded.



Once open, click on the  button in the KVM Firmware Update Window.

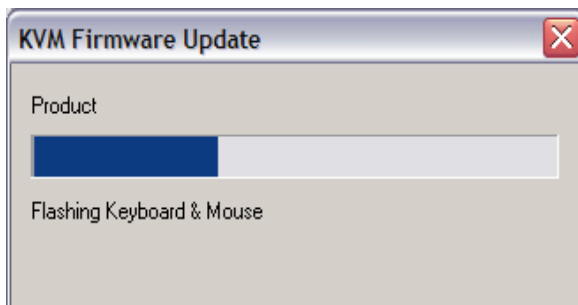
Should you receive the following Error Message then it means that the data cannot be sent to the KVM in order to Flash Update it.



To resolve this click 'OK' and 'OK' again. Unplug Power from the KVM, then unplug the Flash Update Cable. Wait 10 seconds. Now plug the Flash Update Cable in first, followed by the Power Cable. Repeat Step 4.

Step 5

Providing the Flash Upgrade is being performed successfully, you should see a Window with a Progress Bar similar to that shown below.



Step 6

Once the Firmware Upgrade has been successfully completed an extra Window will appear with a message to this effect. Simply close this Window.

Next, unplug both the Flash Update Cable from both KVM and the Computer, followed by the power cable to the KVM.

The Dip Switches should then be returned to their original setting – all Dip Switches set (up) to the 'Off' position.

The KVM can now be powered back on by connecting the Power cable back to the Power Jack.

The Unit should beep once to indicate power has been added. Once successfully powered any Computers can be re-connected to the KVM.

N.B.

Should the unit emit a persistent beep after the Flash Update process then it is indicating that the Firmware has been in some way corrupted. The unit should be re-flashed using an original Firmware on the same Dip-Switch setting as was last used.

Free Manuals Download Website

<http://myh66.com>

<http://usermanuals.us>

<http://www.somanuals.com>

<http://www.4manuals.cc>

<http://www.manual-lib.com>

<http://www.404manual.com>

<http://www.luxmanual.com>

<http://aubethermostatmanual.com>

Golf course search by state

<http://golfingnear.com>

Email search by domain

<http://emailbydomain.com>

Auto manuals search

<http://auto.somanuals.com>

TV manuals search

<http://tv.somanuals.com>