

**BELKIN®**

TV ADAPTER FOR INTEL® WIRELESS DISPLAY

# SCREENCAST

**User Manual**

F7D4501 8820ed00810

**ENGLISH**

# TABLE OF CONTENTS

<b>Getting Started</b> .....	<b>1</b>
Introduction .....	1
What's in the Box? .....	2
What's not in the Box? .....	2
What Else Should I Know? .....	3
<b>Adapter Setup</b> .....	<b>4</b>
Where to Place Your ScreenCast TV Adapter .....	4
Plugging Everything Together .....	4
Software—First-Time Setup .....	5
<b>Using your Screencast</b> .....	<b>10</b>
How to Use It .....	10
Playing Content on Your TV .....	10
Options for Using the TV Screen .....	11
What Else Do I Need to Know? .....	12
Using the Reset Button .....	13
<b>Information</b> .....	<b>14</b>
FCC Statement .....	14
European Compliance Statement .....	15
Belkin International, Inc., Limited 2-Year Product Warranty .....	16
Technical Support .....	18

## GETTING STARTED

---

### Introduction

Thank you for purchasing the ScreenCast TV Adapter for Intel Wireless Display. We created this product to help you wirelessly transmit your favorite content from your laptop to the best screen in your house—your living-room TV.

Before the ScreenCast TV Adapter, you may have needed a long cable or simply crowded around your laptop screen to share movies, pictures, and surf the Web.

Now you can take content from any WiDi laptop with a second-generation Intel® Core™ processor and easily display it on your TV with the ScreenCast TV Adapter.

Play Blu-ray™ movies and stream HD content on your laptop harddrive or from online video and music services directly from your Intel® WiDi laptop to your TV — wirelessly.

### What's in the Box?

- ScreenCast TV Adapter for Intel Wireless Display
- Power Supply (attached to ScreenCast TV Adapter)
- Quick Install Guide
- User Manual on CD
- One HDMI® Cable

### What's not in the Box?

- An Intel Wireless Display (WiDi) laptop
  - You need a WiDi laptop to use the ScreenCast TV Adapter. The latest generation WiDi laptops support streaming of DVD and Blu-ray™ content to your TV in 1080p quality. Check with your PC vendor on which generation of WiDi your PC supports.
- A TV with an available HDMI or RCA input port
  - Belkin recommends a 1080p-capable TV and HDMI for the best picture and sound possible. If you use the ScreenCast TV Adapter with an older model TV that only has RCA (component) inputs, you will only be able to view standard-definition (480p) content.

### What Else Should I Know?

- Intel Wireless Display is a technology that enables a second display for Intel Wireless Display-ready (WiDi) computers. A simple way of thinking about it is as a replacement for a cable to a secondary monitor.
- Once connected, your laptop operates in all the standard Windows® 7 multiple monitor modes: duplicate (mirror) images, extended (a second screen for more desktop space), or projector (laptop screen off and duplicate screen on).
- Intel WiFi hardware and Intel My WiFi Technology (Intel MWT) software allows both an easy connection to the ScreenCast TV Adapter and a standard connection to a wireless access point for Internet connectivity.
- With Intel Wireless Display, you can watch videos on your HDTV while surfing the Web on your laptop.

## ADAPTER SETUP

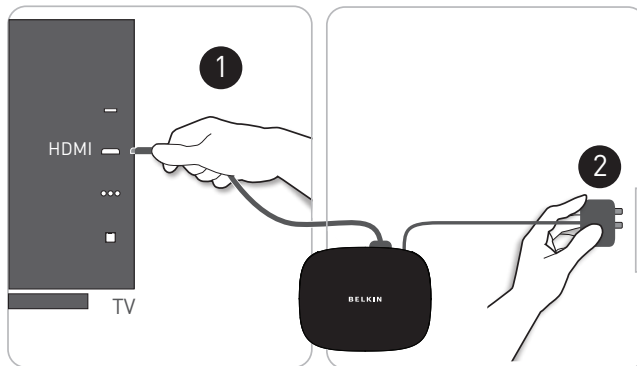
---

### Where to Place Your ScreenCast TV Adapter

- Your ScreenCast TV Adapter and TV need to be close enough together to allow you to connect them with an RCA or HDMI cable (provided). The ScreenCast TV Adapter also needs to have an available power outlet within range.
- For best results, keep your ScreenCast TV Adapter within line-of-sight of wherever you plan to use your WiDi laptop (sold separately)—this will help ensure that your TV receives the best possible signal and you get the most out of your ScreenCast TV Adapter.
- The ScreenCast TV Adapter will be most effective within 30 feet of your laptop, but range will depend on many factors including other sources of interference and the building materials used in your home.

### Plugging Everything Together

- Connect your ScreenCast TV Adapter to your TV with the HDMI cable (included in the box) or RCA cables (sold separately), and connect the power supply to the ScreenCast TV Adapter and a nearby outlet.



### Software—First-Time Setup

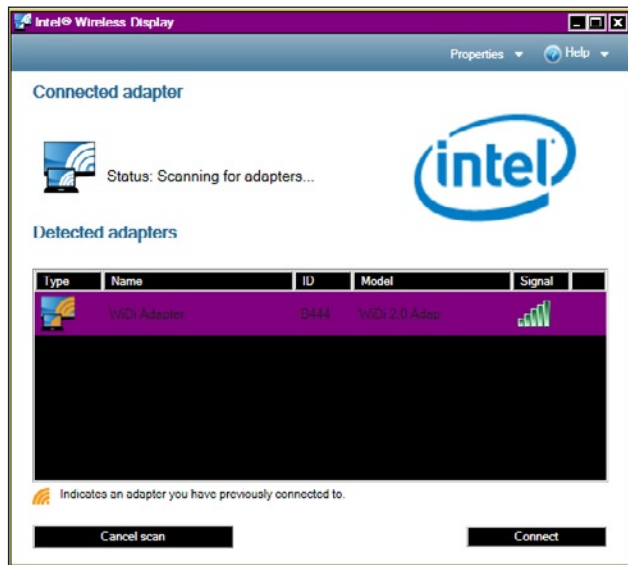
1. Turn on your TV and switch it to the A/V input where your ScreenCast TV Adapter is connected. Then push the power button on the back of the Adapter. You should then see a screen that looks like this:



## ADAPTER SETUP

---

2. On your WiDi laptop, launch the Intel Wireless Display software. On some laptop PCs, this may be a switch at the top of the keyboard. Other PCs may require you to start a program from a shortcut on the desktop or in the system tray. Refer to your PC manufacturer's documentation for specific details on your model.

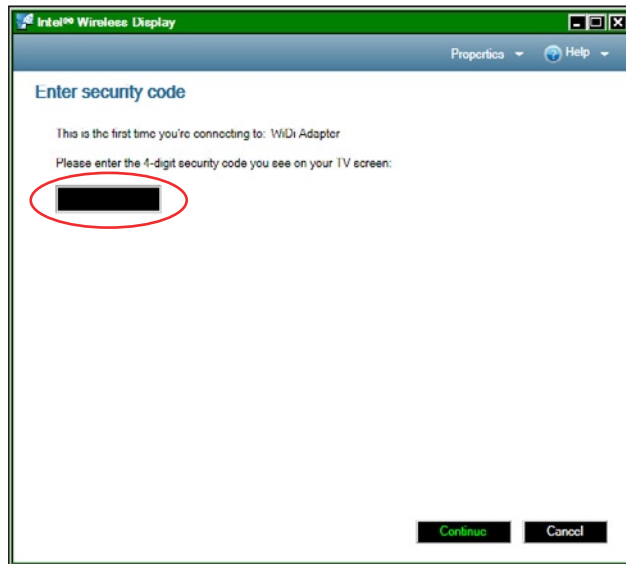
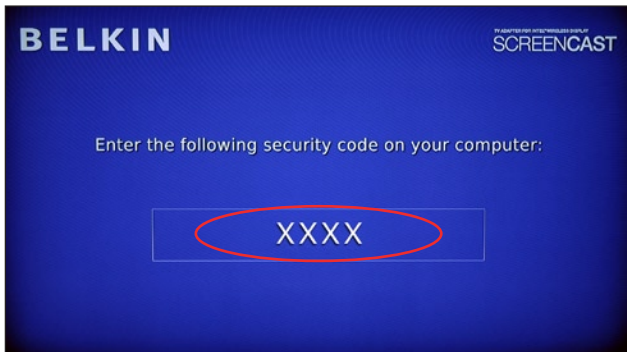




## ADAPTER SETUP

---

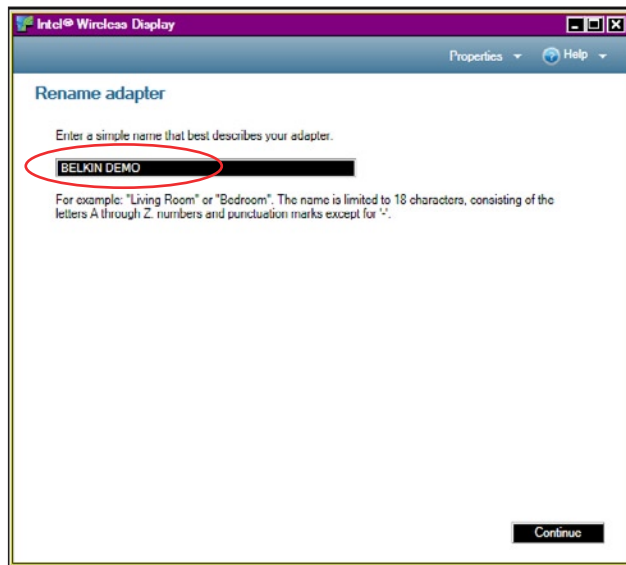
3. When you click to connect to the ScreenCast TV Adapter, a screen will appear on your TV with a 4-digit security code. A similar screen appears on your PC requesting that code. Enter the 4-digit code into the appropriate box on your laptop screen.



## ADAPTER SETUP

---

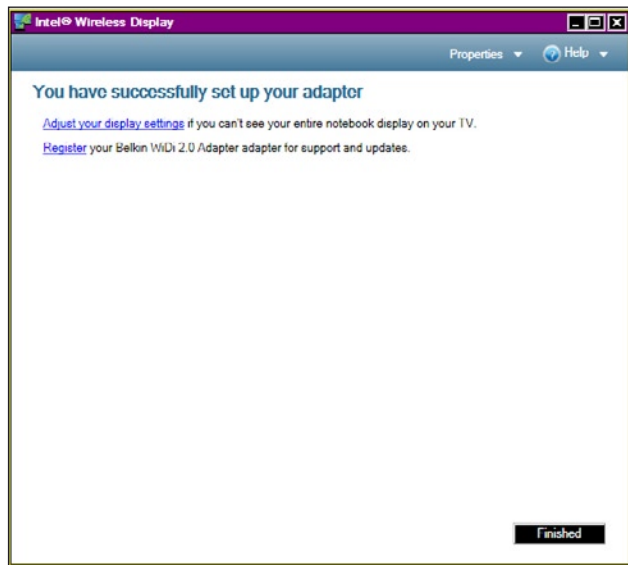
4. Name the ScreenCast TV Adapter. Naming it will allow you to easily find it in a list of available adapters should you have more than one within range. Use a name that is easy to remember like "Living Room WiDi". If you choose not to name it, the device will be set to a factory-default name.



## ADAPTER SETUP

---

- Next, the software will prompt you to easily configure your display so that it completely fits on the TV screen. (The initial setup uses a mirror approach so that you can see the same screen on both devices—you can change this later.) You can also register your ScreenCast TV Adapter with Belkin to receive updates and support.
- Once you have the display configured the way you want and you've registered your product, click "Complete." You can now use your TV as a second monitor.



## USING YOUR SCREENCAST

---

### How to Use It

1. Simply press the Intel Wireless Display button on your WiDi laptop or click on the desktop WiDi icon, and the rest is automatically handled by your PC.
2. When you start WiDi on your laptop, a screen appears that allows you to select from available adapters. The ScreenCast TV Adapter should appear on this list.
  - If you don't see the ScreenCast TV Adapter on the list, you may need to move your laptop closer to the ScreenCast TV Adapter for a better signal. You should also confirm that the ScreenCast TV Adapter is connected to power and the power is turned on.

### Playing Content on Your TV

- This is the easy part. Once you are connected, you can use your TV as though it is a second screen for your laptop PC. Any content that you can watch on your laptop, including DVDs or Blu-ray Disc, can now be viewed on your TV. Whatever you can watch on your laptop's screen, you can now watch on your TV.

### Options for Using the TV Screen

You have three basic options for how to use your TV and laptop screens.

- Mirroring or “cloning” (displaying the same content on both screens)—useful for when you want to use your laptop’s keyboard or mouse while showing content to other people.
- Extended monitor—this allows you to keep using your laptop screen while sending content over to your TV for a larger group to see.



- Using just the TV as a monitor—great for movies or other content that you want to enjoy on one large screen.



### What Else Do I Need to Know?

#### Protected Content Output (HDCP)

- Version 2.0+ of Intel Wireless Display supports High-Bandwidth Digital Copyright Protection (HDCP). This support happens between the PC and the ScreenCast TV Adapter and between the ScreenCast TV Adapter and the TV. If any part of this chain is broken, the content may not play on the TV screen. Protected content playback is enforced by the software media player running on the PC.

#### Audio Output

- The ScreenCast TV Adapter outputs the audio simultaneously to two audio options as follows:
  - HDMI: PCM - stereo or surround (5.1 channel sound)
  - RCA L&R jacks: analog - stereo or L&R only from surround

### Using the Reset Button

#### Changing the language

- To change the language, you can use a paper clip to push the reset button shown in the diagram. **A short press of this button** (less than one second) will allow you to cycle between different language options for the ScreenCast TV Adapter.

#### Hard reset of security profile

- If you press the reset button **for more than 5 seconds**, you will reset the security profile. This will require that you complete the setup process a second time and re-pair your laptop and ScreenCast TV Adapter.



### FCC Statement

#### DECLARATION OF CONFORMITY WITH FCC RULES FOR ELECTROMAGNETIC COMPATIBILITY

We, Belkin International, Inc., of 12045 E. Waterfront Drive, Playa Vista, CA 90094, declare under our sole responsibility that the product, **F7D4501**, to which this declaration relates, complies with Part 15 of the FCC Rules. Operation is subject to the following two conditions: (1) this device may not cause harmful interference, and (2) this device must accept any interference received, including interference that may cause undesired operation.

#### Caution: Exposure to Radio Frequency Radiation.

The radiated output power of this device is far below the FCC radio frequency exposure limits. Nevertheless, the device shall be used in such a manner that the potential for human contact during normal operation is minimized. When connecting an external antenna to the device, the antenna shall be placed in such a manner to minimize the potential for human contact during normal operation. In order to avoid the possibility of exceeding the FCC radio frequency exposure limits, human proximity to the antenna shall not be less than 20cm (8 inches) during normal operation.

#### Federal Communications Commission Notice

This equipment has been tested and found to comply with the limits for a Class B digital device, pursuant to Part 15 of the FCC Rules. These limits are designed to provide reasonable protection against harmful interference in a residential installation.

This equipment generates, uses, and can radiate radio frequency energy. If this equipment does cause harmful interference to radio or television reception, which can be determined by turning the

equipment off and on, the user is encouraged to try and correct the interference by one or more of the following measures:

- Reorient or relocate the receiving antenna.
- Increase the distance between the equipment and the receiver.
- Connect the equipment to an outlet on a circuit different from that to which the receiver is connected.
- Consult the dealer or an experienced radio/TV technician for help.

FCC Caution: Any changes or modifications not expressly approved by the party responsible for compliance could void the user's authority to operate this equipment.

#### Modifications

The FCC requires the user to be notified that any changes or modifications to this device that are not expressly approved by Belkin International, Inc., may void the user's authority to operate the equipment.



## INFORMATION

---

### European Compliance Statement:

Belkin International hereby declares that this F7D4501 ScreenCast TV Adapter for Intel Wireless Display is in compliance with the essential requirements and other relevant provisions of the RTT&E Directive 1999/5/EC, the EMC Directive 2004/108/EC, and the Low Voltage Directive 2006/5/EC. Conformity was assessed using a Technical Construction File.

A copy of the European Union CE marking "Declaration of Conformity" may be obtained at the website: [www.belkin.com/doc](http://www.belkin.com/doc)



For information on product disposal please refer to <http://environmental.belkin.com>

### **Belkin International, Inc., Limited 2-Year Product Warranty**

#### **What this warranty covers.**

Belkin International, Inc. ("Belkin") warrants to the original purchaser of this Belkin product that the product shall be free of defects in design, assembly, material, or workmanship.

#### **What the period of coverage is.**

Belkin warrants the Belkin product for two years.

#### **What will we do to correct problems?**

##### *Product Warranty.*

Belkin will repair or replace, at its option, any defective product free of charge (except for shipping charges for the product). Belkin reserves the right to discontinue any of its products without notice, and disclaims any limited warranty to repair or replace any such discontinued products. In the event that Belkin is unable to repair or replace the product (for example, because it has been discontinued), Belkin will offer either a refund or a credit toward the purchase of another product from Belkin.com in an amount equal to the purchase price of the product as evidenced on the original purchase receipt as discounted by its natural use.

#### **What is not covered by this warranty?**

All above warranties are null and void if the Belkin product is not provided to Belkin for inspection upon Belkin's request at the sole expense of the purchaser, or if Belkin determines that the Belkin product has been improperly installed, altered in any way, or tampered with. The Belkin Product Warranty does not protect against acts of God such as flood, earthquake, lightning, war, vandalism, theft, normal-use wear and tear, erosion, depletion, obsolescence, abuse, damage due to low voltage disturbances (i.e. brownouts or sags), non-authorized program, or system equipment modification or alteration.

#### **How to get service.**

To get service for your Belkin product you must take the following steps:

1. Contact Belkin Tech Support at the number listed on page 18, within 15 days of the Occurrence. Be prepared to provide the following information:
  - a. The part number of the Belkin product.
  - b. Where you purchased the product.
  - c. When you purchased the product.
  - d. Copy of original receipt.
2. Your Belkin Customer Service Representative will then instruct you on how to forward your receipt and Belkin product and how to proceed with your claim.

Belkin reserves the right to review the damaged Belkin product. All costs of shipping the Belkin product to Belkin for inspection shall be borne solely by the purchaser. If Belkin determines, in its sole discretion, that it is impractical to ship the damaged equipment to Belkin, Belkin may designate, in its sole discretion, an equipment repair facility to inspect and estimate the cost to repair such equipment. The cost, if any, of shipping the equipment to and from such repair facility and of such estimate shall be borne solely by the purchaser. Damaged equipment must remain available for inspection until the claim is finalized. Whenever claims are settled, Belkin reserves the right to be subrogated under any existing insurance policies the purchaser may have.

### **How state law relates to the warranty.**

THIS WARRANTY CONTAINS THE SOLE WARRANTY OF BELKIN. THERE ARE NO OTHER WARRANTIES, EXPRESSED OR, EXCEPT AS REQUIRED BY LAW, IMPLIED, INCLUDING THE IMPLIED WARRANTY OR CONDITION OF QUALITY, MERCHANTABILITY OR FITNESS FOR A PARTICULAR PURPOSE, AND SUCH IMPLIED WARRANTIES, IF ANY, ARE LIMITED IN DURATION TO THE TERM OF THIS WARRANTY.

Some states do not allow limitations on how long an implied warranty lasts, so the above limitations may not apply to you.

IN NO EVENT SHALL BELKIN BE LIABLE FOR INCIDENTAL, SPECIAL, DIRECT, INDIRECT, CONSEQUENTIAL OR MULTIPLE DAMAGES SUCH AS, BUT NOT LIMITED TO, LOST BUSINESS OR PROFITS ARISING OUT OF THE SALE OR USE OF ANY BELKIN PRODUCT, EVEN IF ADVISED OF THE POSSIBILITY OF SUCH DAMAGES.

This warranty gives you specific legal rights, and you may also have other rights, which may vary from state to state. Some states do not allow the exclusion or limitation of incidental, consequential, or other damages, so the above limitations may not apply to you.

## Technical Support

### US

<http://www.belkin.com/support>

### UK

<http://www.belkin.com/uk/support>

### Australia

<http://www.belkin.com/au/support>

### New Zealand

<http://www.belkin.com/au/support>

### Singapore

1800 622 1130

### Europe

<http://www.belkin.com/uk/support>

You can find technical-support information on our website, [www.belkin.com](http://www.belkin.com), by navigating to the tech-support section.

If you want to contact technical support by phone, please call the number you need from this list\*:

\*Local rates apply.

COUNTRY	NUMBER	INTERNET ADDRESS
AUSTRIA	0820 200766	<a href="http://www.belkin.com/de/networking/">www.belkin.com/de/networking/</a>
BELGIUM	07 07 00 073	<a href="http://www.belkin.com/nl/networking/">www.belkin.com/nl/networking/</a> <a href="http://www.belkin.com/fr/networking/">www.belkin.com/fr/networking/</a>
CZECH REPUBLIC	239 000 406	<a href="http://www.belkin.com/uk/networking/">www.belkin.com/uk/networking/</a>
DENMARK	701 22 403	<a href="http://www.belkin.com/uk/networking/">www.belkin.com/uk/networking/</a>
FINLAND	0972519123	<a href="http://www.belkin.com/uk/networking/">www.belkin.com/uk/networking/</a>
FRANCE	08 - 25 54 00 26	<a href="http://www.belkin.com/fr/networking/">www.belkin.com/fr/networking/</a>
GERMANY	0180 - 500 57 09	<a href="http://www.belkin.com/de/networking/">www.belkin.com/de/networking/</a>
GREECE	00800 - 44 14 23 90	<a href="http://www.belkin.com/uk/networking/">www.belkin.com/uk/networking/</a>
HUNGARY	06 - 17 77 49 06	<a href="http://www.belkin.com/uk/networking/">www.belkin.com/uk/networking/</a>
ICELAND	800 8534	<a href="http://www.belkin.com/uk/networking/">www.belkin.com/uk/networking/</a>
IRELAND	0818 55 50 06	<a href="http://www.belkin.com/uk/networking/">www.belkin.com/uk/networking/</a>
ITALY	02 - 69 43 02 51	<a href="http://www.belkin.com/it/networking/">www.belkin.com/it/networking/</a>
LUXEMBOURG	34 20 80 85 60	<a href="http://www.belkin.com/uk/networking/">www.belkin.com/uk/networking/</a>
NETHERLANDS	0900 - 040 07 90 €0.10 per minute	<a href="http://www.belkin.com/nl/networking/">www.belkin.com/nl/networking/</a>
NORWAY	81 50 0287	<a href="http://www.belkin.com/uk/networking/">www.belkin.com/uk/networking/</a>
POLAND	00800 - 441 17 37	<a href="http://www.belkin.com/uk/networking/">www.belkin.com/uk/networking/</a>
PORTUGAL	707 200 676	<a href="http://www.belkin.com/uk/networking/">www.belkin.com/uk/networking/</a>
RUSSIA	495 580 9541	<a href="http://www.belkin.com/networking/">www.belkin.com/networking/</a>
SLOVAKIA	08000 04614	<a href="http://www.belkin.com/networking/">www.belkin.com/networking/</a>
SLOVENIA	0800 80510	<a href="http://www.belkin.com/networking/">www.belkin.com/networking/</a>
SOUTH AFRICA	0800 - 99 15 21	<a href="http://www.belkin.com/uk/networking/">www.belkin.com/uk/networking/</a>
SPAIN	902 - 02 43 66	<a href="http://www.belkin.com/es/networking/">www.belkin.com/es/networking/</a>
SWEDEN	07 - 71 40 04 53	<a href="http://www.belkin.com/uk/networking/">www.belkin.com/uk/networking/</a>
SWITZERLAND	08 - 48 00 02 19	<a href="http://www.belkin.com/de/networking/">www.belkin.com/de/networking/</a> <a href="http://www.belkin.com/fr/networking/">www.belkin.com/fr/networking/</a>
UNITED KINGDOM	0845 - 607 77 87	<a href="http://www.belkin.com/uk/networking/">www.belkin.com/uk/networking/</a>
OTHER COUNTRIES	+44 - 1933 35 20 00	

# belkin.com

© 2011 Belkin International, Inc. All rights reserved. All trade names are registered trademarks of respective manufacturers listed. Windows is either a registered trademark or trademark of Microsoft Corporation in the United States and/or other countries. HDMI is a trademark or registered trademark of HDMI Licensing LLC in the United States and other countries. Intel Wireless Display requires a compatible laptop PC, a TV adapter featuring Intel Wireless Display, and a TV with an available HDMI or Composite AV input. Compatible laptop PCs require a select Intel Core processor family CPU. For a complete list of requirements, visit [www.intel.com/go/wirelessdisplay](http://www.intel.com/go/wirelessdisplay). Check with your PC manufacturer for specific details. Other names and brands may be claimed as the property of others.

© 2011 Intel Corporation. All rights reserved. Intel, the Intel logo, and Intel Core are trademarks of Intel Corporation in the U.S. and other countries.  
F7D4501\_8820ed00810

Belkin Ltd.  
Express Business Park  
Shipton Way, Rushden  
NN10 6GL, United Kingdom

Belkin SAS  
130 rue de Silly  
92100 Boulogne-Billancourt,  
France

Belkin GmbH  
Otto-Hahn-Straße 20  
85609 Aschheim  
Germany

Belkin Iberia  
Avda de Barajas, 24, Edificio Gamma,  
4ªpta, 28108 Alcobendas  
Madrid - Spain

Belkin Italy & Greece  
Via Nino Bonnet, 4/6  
Milan 20154  
Italy

Belkin B.V.  
Tupolevlaan 1  
1119 NW Schiphol-Rijk,  
Netherlands

## Free Manuals Download Website

<http://myh66.com>

<http://usermanuals.us>

<http://www.somanuals.com>

<http://www.4manuals.cc>

<http://www.manual-lib.com>

<http://www.404manual.com>

<http://www.luxmanual.com>

<http://aubethermostatmanual.com>

Golf course search by state

<http://golfingnear.com>

Email search by domain

<http://emailbydomain.com>

Auto manuals search

<http://auto.somanuals.com>

TV manuals search

<http://tv.somanuals.com>