



Bluetooth™ Wireless Desktop

*Enjoy the freedom and convenience
of wireless input*



User Manual
F8T042ukB

TABLE OF CONTENTS

Introduction	2
Overview	
Product Features	3
System Requirements	4
Package Contents.	5
Specifications	6
Supported Profiles	8
Software Setup	10
Hardware Setup	15
Initial Configuration Wizard	19
Connecting the <i>Bluetooth</i> Desktop	22
Connecting the <i>Bluetooth</i> Keyboard	24
Connecting the <i>Bluetooth</i> Mouse	28
Uninstalling the Software.	32
FAQs	33
Battery and Safety Information	36
Information	38

INTRODUCTION

Congratulations and thank you for purchasing the *Bluetooth* Wireless Desktop from Belkin. This breakthrough technology makes it easier than ever to connect many of your computing and communications devices—without physical connections or cables. Please be sure to review this User Manual carefully, to ensure that you take advantage of all the features and capabilities of your new *Bluetooth* Wireless Desktop.

Please note: References made to the Bluetooth USB Adapter are to equipment included with your Bluetooth Wireless Desktop, part number F8T042-B. The Bluetooth USB Adapter lets you easily add Bluetooth capabilities to your USB computer.



OVERVIEW

Product Features

The *Bluetooth* Desktop is compliant with *Bluetooth* Standard version 1.1 and:

- Offers the convenience of the wireless *Bluetooth* interface
- Features comfortable, ergonomic design
- Works at distances of up to 10 meters (33 ft.)
- Installs and operates easily
- Includes *Bluetooth* USB Adapter that allows you to connect up to 7 *Bluetooth* devices at one time

the Keyboard:

- Offers 104-button support
- Includes 17 Internet, multimedia, and application keys

the Mouse:

- Delivers the accurate response of optical technology
- Navigates easily, using 4 buttons and the scroll wheel

OVERVIEW

The USB Adapter is compliant with *Bluetooth* Standard Version 1.1 and provides:

- Compliance with *Bluetooth* specification v1.1 devices
- USB bus powering; no external power supply necessary
- Support for Microsoft® Windows® 98SE, Me, 2000, XP and Server 2003.
- Operating distance of up to 10 meters
- Point-to-multipoint connections
- Support for data rates up to 721Kbps
- Built-in security, including up to 128-bit encryption and authentication
- Compatibility with USB desktop and notebook computers

System Requirements

- PC-compatible computer, CPU speed 200MHz or above
- Memory: 64MB or above, 128MB recommended
- One available USB port, USB 1.1 standard
- Windows® 98SE, Me, 2000, XP and Server 2003.

OVERVIEW

Package Contents

- *Bluetooth* Wireless Keyboard
- *Bluetooth* Wireless Optical Mouse
- *Bluetooth* USB Adapter
- USB base with 6 ft. extension
- CD-ROM for installation and documentation
- User Manual
- Quick Installation Guide
- Registration Card
- 6 AA Batteries

OVERVIEW

Wireless Specifications

Bluetooth Compliance	Version 1.1 Compatible to Bluetooth HID profile 0.95c
Operating Frequency	2.4 to 2.4835GHz
Output Power	Class II (<4 dBm) RF output power
Operation Range	10-meter (33 ft.) radius indoors
Antenna	Integrated

Mouse Specifications

Pointing Device	Optical, 800dpi
Buttons	4+ scroll-wheel button
Batteries Required	2 AA (included)
Battery Life	25 days under normal usage; 100 days standby

Specifications subject to change without notice.

OVERVIEW

Keyboard Specifications

Buttons/Keys	104+ 17 Multimedia/ Internet buttons
Batteries Required	4 AA (included)
Battery Life	25 days under normal usage; 100 days standby
USB Backup	USB "B"-Type Connector

General Specifications

Dimensions	
Mouse	74 (W) x 130 (L) x 45mm (H)
Keyboard	495 (W) x 196.9 (L) x 25.4mm (H)
Weight	
Mouse	108g (without battery)
Keyboard	308g (without battery)

Specifications subject to change without notice.

OVERVIEW

Supported Profiles

The services supported by your USB Adapter are defined as “Profiles”.

Available profiles include:



Serial Port



Object Exchange



Personal Area Network



LAN Access



File Transfer



Human Interface Device*



Dial-Up Networking



Synchronization



Hardcopy Cable Replacement



Headset



Fax



Audio Gateway

*Supported by Bluetooth Keyboard and Mouse

Download from www.Somanuals.com. All Manuals Search And Download.

OVERVIEW

Your USB Adapter gives you the ability to do the following—without cables:

- Transfer files
- Access dial-up networks
- Connect to local area networks
- Perform an ActiveSync® session
- Connect to serial ports
- Print
- Exchange PIM data
- Send or exchange business cards
- Connect to input devices

The basic functions of the *Bluetooth* Neighbourhood include:

- Device Discovery
- Service Discovery
- Establishing links with remote devices

SOFTWARE SETUP

Installing the USB Adapter

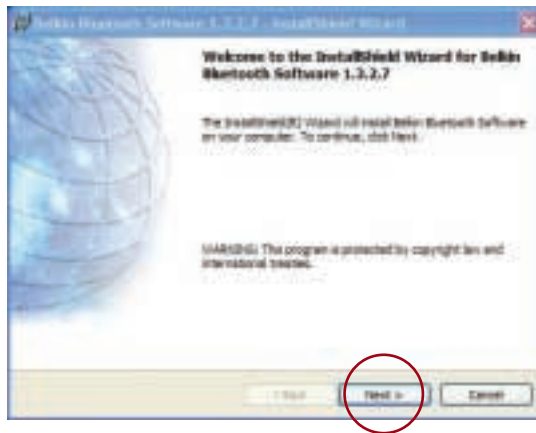
Software Setup for Windows 98 SE, Me, 2000, and XP

To install the software for the USB Adapter, follow the instructions below:

The installation process for Windows XP may look slightly different from Windows 98 SE, Me, and 2000.

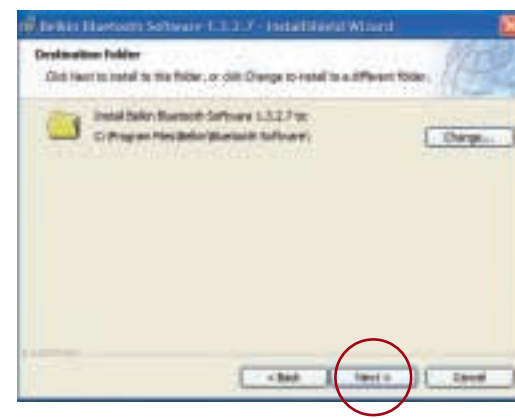
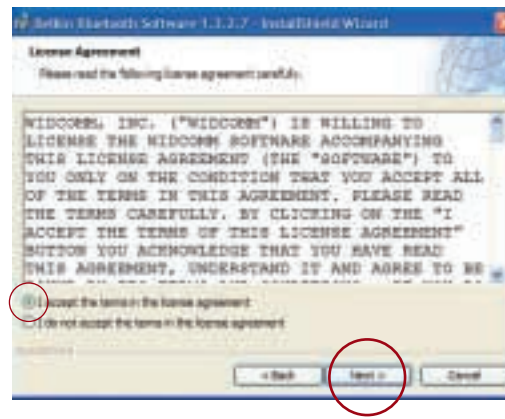
Note: Do not insert the USB Adapter into the USB port prior to installation.

1. Insert the software installation CD into the PC's CD-ROM drive.
2. The "Software InstallShield Wizard" window appears. Click on "Next" to begin the installation process.



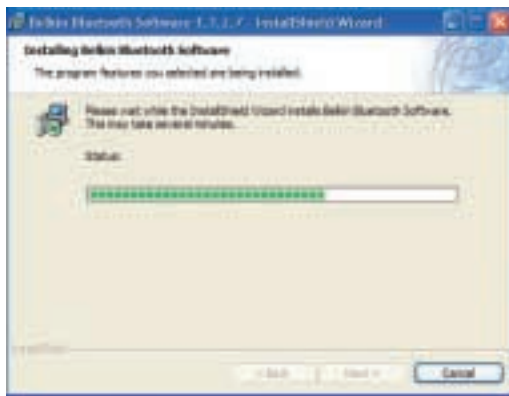
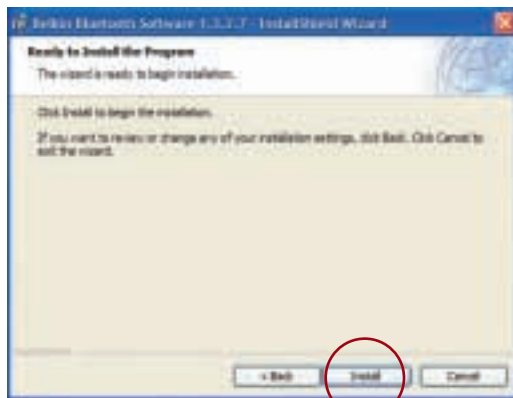
SOFTWARE SETUP

3. Choose "I accept the terms in the license agreement" to accept the license agreement. Click on "Next" to continue.
4. Specify the location where the software files will be installed on your hard drive. It is recommended that you install the software in the default directory "C:\Program Files\Belkin\Bluetooth\Software\". Click on "Next" to continue.



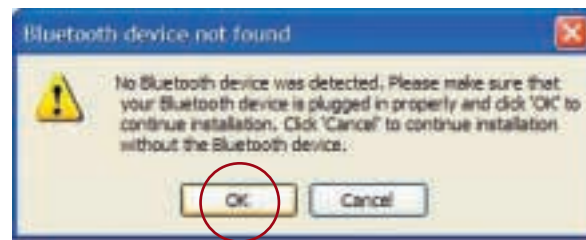
SOFTWARE SETUP

5. Confirm that the device software is ready to be installed and click on “Install”.
6. The InstallShield Wizard will begin to install the *Bluetooth* software. This may take several minutes.



SOFTWARE SETUP

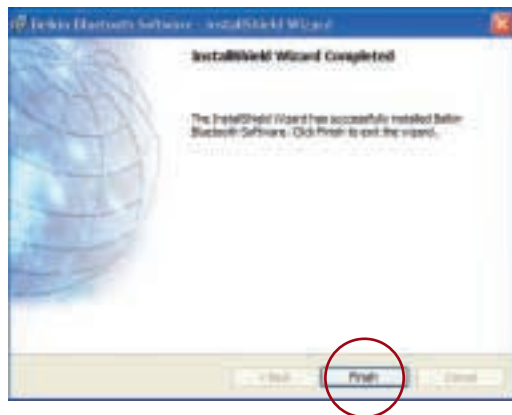
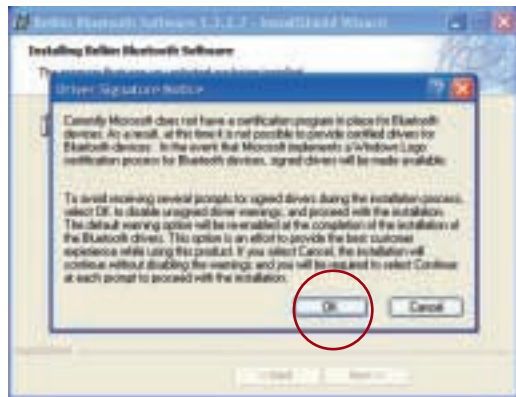
7. During the installation process, you will be prompted to insert your *Bluetooth* USB Adapter. If your Adapter is not plugged into your computer at this time, you may insert it into an available USB 1.1-compliant port on your desktop or notebook, then click “OK” to continue. Refer to the “Hardware Setup” section on page 15 for detailed instructions on connecting the USB Adapter to your computer.



SOFTWARE SETUP

Note: If at any time during the installation process you receive a “Driver Signature Notice”, click “OK” to continue the installation process.

8. Confirm the completion of the software installation; click “Finish” and restart the system if prompted to do so.



HARDWARE SETUP

USB Adapter

You must connect the *Bluetooth* USB Adapter to an available Universal Serial Bus (USB) port on your computer.

Note: Your USB Adapter is sensitive to static electricity, which can damage its delicate electrical components. Electrostatic charges can be acquired simply by dry weather conditions or they can occur when you walk across carpeted floors. To protect your device, always touch the metal chassis of your computer before handling the USB Adapter, or any internal computer component. This will ground a potential electrostatic discharge. Avoid touching the metal connector when handling the USB Adapter.

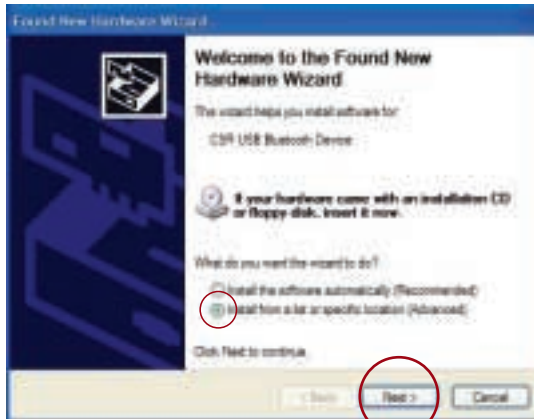
There are two ways to connect your USB Adapter:

1. Connect the USB Adapter directly to an available USB A-type connector on your desktop or notebook computer.
2. Connect the USB Adapter to the included USB base stand, and then connect the other end of the cable to an available USB A-type connector on your desktop or notebook computer. This is recommended for desktop computers.

HARDWARE SETUP

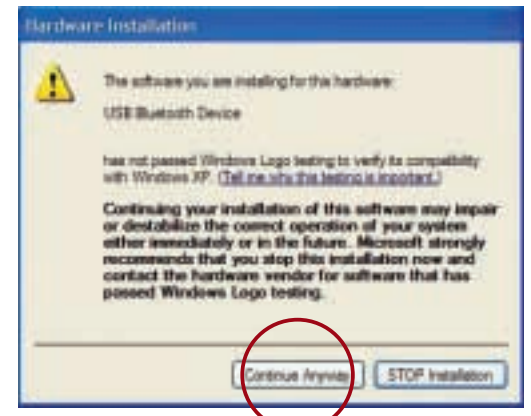
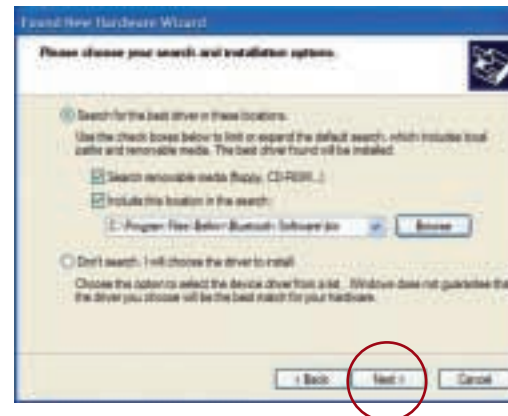
Hardware Setup for Windows 98 SE, Me, 2000, and XP

1. Once you have connected the USB Adapter, your system will display a “New USB device found”. Follow the prompts to install drivers for your Adapter.
2. Choose “Install from a list or Specific location”; then click “Next”.



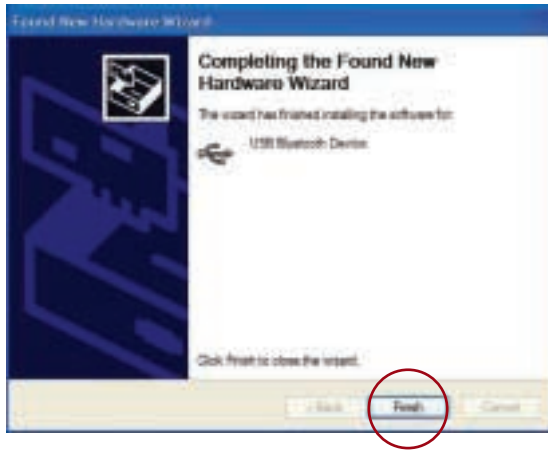
HARDWARE SETUP

3. Browse for the location of the device driver “C:\Program Files\Belkin\Bluetooth\Software\bin\” then click “Next”.
4. If you receive the following “Hardware installation notice”, click on “Continue Anyway” to continue with the installation process.



HARDWARE SETUP

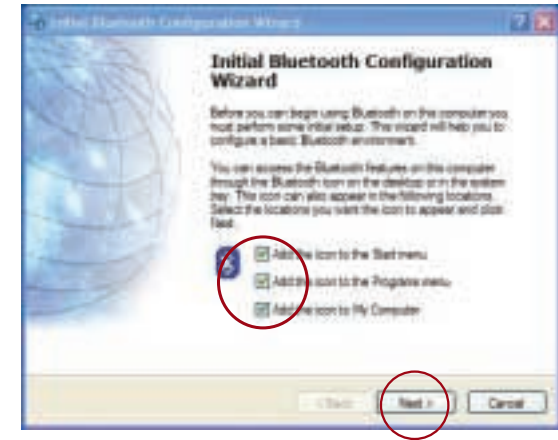
5. A window will appear that confirms the completion of the hardware installation; click on “Finish” to complete the installation process.



INITIAL CONFIGURATION WIZARD

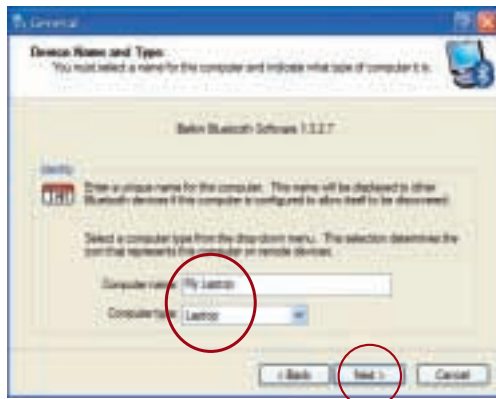
Configuring your Computer for Windows 98 SE, Me, 2000, and XP

1. Once the installation process is complete, the “Initial *Bluetooth* Configuration Wizard” will prompt you. Follow the prompts as the Wizard guides you through the initial setup of your *Bluetooth* device.
2. Name your computer with a name you can easily remember. This name will appear in reference to your computer when it is discovered by other *Bluetooth* devices.



INITIAL CONFIGURATION WIZARD

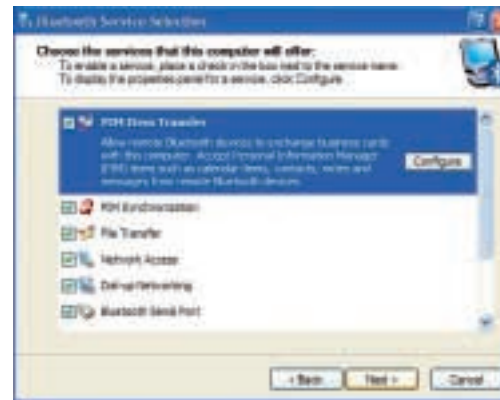
- Choose the type of computer you have installed the *Bluetooth* USB Adapter to in the drop-down menu and click "Next".
- Continue to use the Wizard to configure the *Bluetooth* services that this computer will allow other *Bluetooth* devices to access. Click "Next".



INITIAL CONFIGURATION WIZARD

- Choose the *Bluetooth* services your computer will offer. The most common service for your computer type will be checked by default.

Congratulations! Your computer is ready to connect to your *Bluetooth* devices. If you have another *Bluetooth* device and you want to configure the way this computer will use its services, click "Next". Otherwise click "Skip", and proceed to the "Connecting the *Bluetooth* Desktop" section of this manual on page 22.



CONNECTING THE *BLUETOOTH* DESKTOP

The following steps will allow you to establish the initial connection between your Wireless Desktop and computer. Once a connection is established, your computer will automatically connect every time to boot your computer. If for any reason the Desktop does not reconnect at boot-up, follow the pairing and connection procedures on page 24.

Note: You must have a functional keyboard other than the Bluetooth Keyboard connected to your computer to complete the hardware installation. Please do not remove any attached keyboards until you have confirmed that your Bluetooth Keyboard is operational.

CONNECTING THE *BLUETOOTH* DESKTOP

Inserting the Batteries

The Keyboard requires four AA batteries and the Mouse requires two AA batteries to run (included). When it becomes necessary to replace them, be sure to use new batteries only; we recommend alkaline batteries. Rechargeable batteries may be used as well.

To insert the batteries:

1. Turn the Keyboard and Mouse upside down, and remove the battery compartment cover.
2. Insert the new batteries. Make sure to properly orient the positive (+) and negative (-) ends as indicated on the battery compartment label.
3. Close the battery compartment cover.

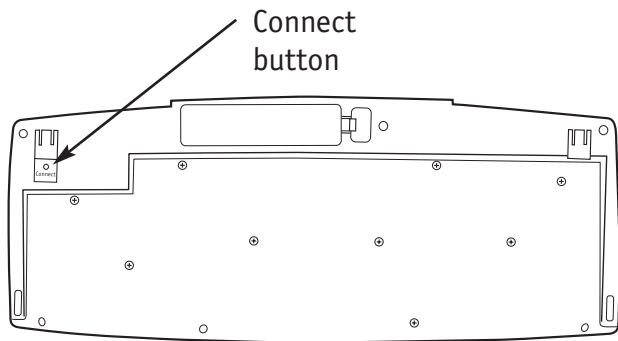
Important: Before boarding any aircraft, remove the batteries from the Wireless Desktop. The Desktop can transmit radio frequency energy, much like cellular phones, whenever the batteries are installed.

Please refer to the “Battery and Safety Information” section on page 36 for more information regarding the handling and usage of batteries.

CONNECTING THE *BLUETOOTH* KEYBOARD

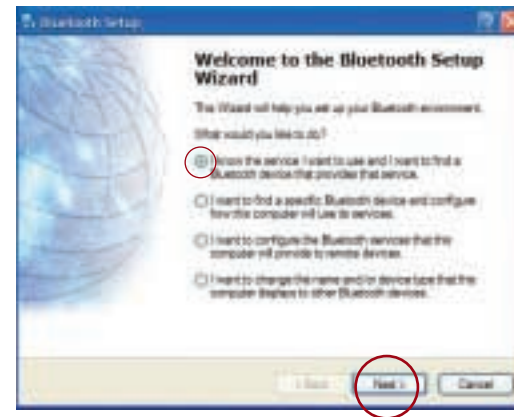
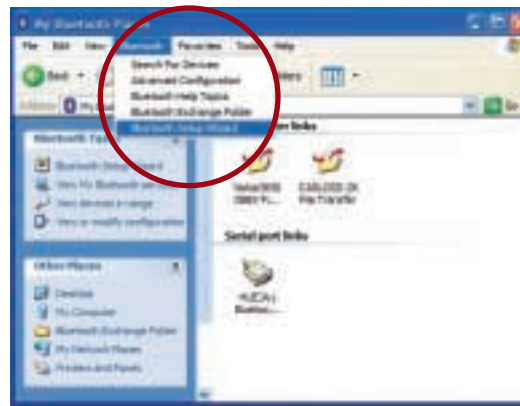
Preparing the Keyboard

1. Turn the Keyboard upside down, and press the “Connect” button once. You should see the LED blink rapidly. This indicates that the Keyboard is in pairing mode and is ready to connect to your computer.



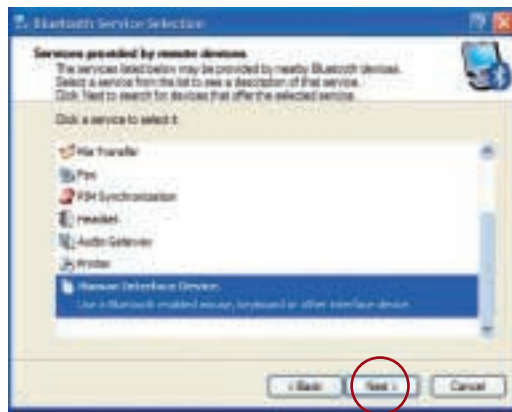
CONNECTING THE *BLUETOOTH* KEYBOARD

2. On your computer, open “My Bluetooth Places” by double-clicking on the *Bluetooth* icon.
3. From the menu bar, select “Bluetooth” then “Bluetooth Setup Wizard”.
4. Select “I know the service I want to use and I want to find a *Bluetooth* device that provides that service.” Then click “Next”.



CONNECTING THE *BLUETOOTH* KEYBOARD

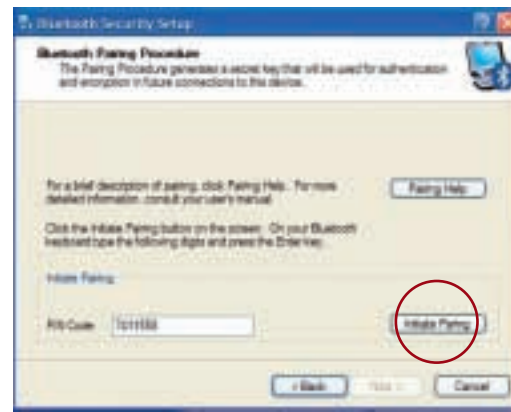
- From the menu, scroll down to select “Human Interface Device” then click on “Next”. Please verify that the LED continues to flash rapidly.
- The *Bluetooth* Keyboard will be discovered. Click on the *Bluetooth* Keyboard icon then click “Next”.



CONNECTING THE *BLUETOOTH* KEYBOARD

- The “Pairing Procedure” window will appear. Click on the “Initiate Pairing” button on the screen.
- On your *Bluetooth* Keyboard, type the unique pin-code digits and press the “Enter” key.
- Type the name you would like your Keyboard to appear as and click “Finish”.

Your Keyboard is now connected. Type with your Keyboard to verify the connection.

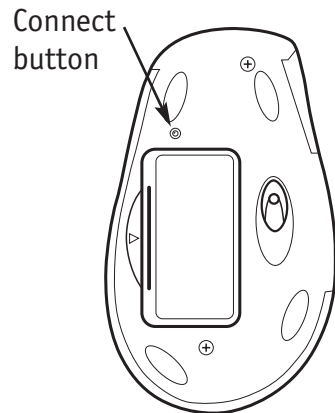


CONNECTING THE *BLUETOOTH* MOUSE

The following steps will allow you to establish the initial connection between your Mouse and computer. Once a connection is established, your computer will automatically connect to your Mouse every time you reboot. If the Mouse does not reconnect at boot-up, follow the pairing and connection procedures on page 24.

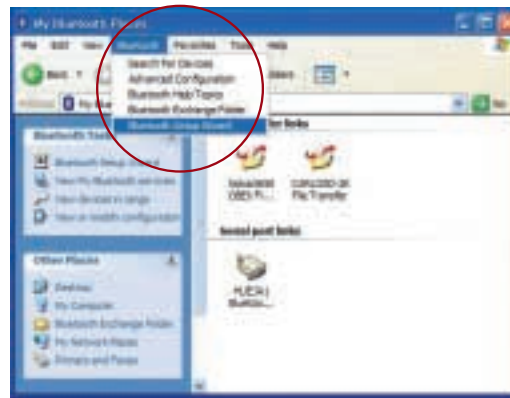
Preparing the Mouse

1. Turn the Mouse upside down, and press the “Connect” button once. You should see the Scroll Wheel LED blink rapidly. This indicates that the Mouse is in pairing mode and is ready to connect to your computer.
2. On your computer, open “My Bluetooth Places” by double-clicking on the *Bluetooth* icon.



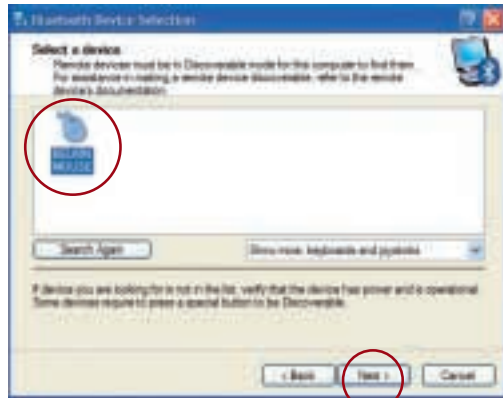
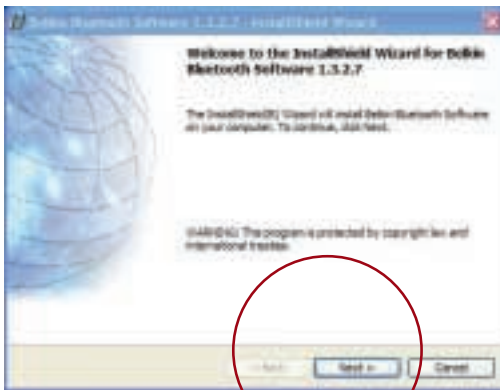
CONNECTING THE *BLUETOOTH* MOUSE

3. From the menu bar select “Bluetooth” then “Bluetooth Setup Wizard”.
4. Select “I want to find a specific *Bluetooth* device and configure how this computer will use its services”. Then click “Next”.



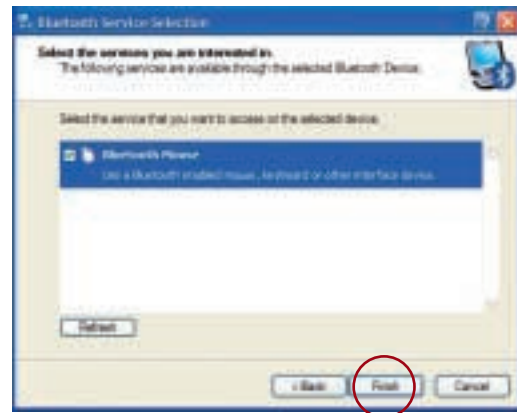
CONNECTING THE *BLUETOOTH* MOUSE

- From the drop-down menu, select “Show mice, keyboards and joysticks” then click on the “Search Again” button. Please verify that the Scroll Wheel LED continues to flash rapidly.
- The Belkin Mouse will be discovered. Click on the Belkin Mouse icon then click “Next”.



CONNECTING THE *BLUETOOTH* MOUSE

- The services that are available from the device will be listed. Select “Bluetooth Mouse” and click “Finish”.
- Wait while the Mouse is installed. This may take several seconds.
- Your Mouse is now connected. Move your Mouse to verify the connection.



UNINSTALLING THE SOFTWARE

Uninstalling the Software for Windows 98 SE, Me, 2000, and XP

Follow these instructions to uninstall your *Bluetooth* USB Adapter.

1. Insert the CD-ROM included with your USB Adapter.
2. The "InstallShield Wizard" should automatically load. If it does not load, explore the CD and run the "Setup.exe" file.
3. The "InstallShield" window should now appear. Click "Next" to continue with the uninstall process.

FAQs

Which *Bluetooth* Profiles does the USB Adapter support?

The included *Bluetooth* USB Adapter supports the most current *Bluetooth* profile set including: Service Discovery, File Transfer, LAN Access, Serial Port, DUN, Generic Object Exchange, Business Card, Push, Pull & Exchange, Fax, Synchronisation, PAN, HCRP, Audio Gateway, Headset, and Human Interface Device.

Which *Bluetooth* Profiles does the *Bluetooth* Wireless Desktop (the Desktop) Support?

The Desktop supports the Human Interface Device profile.

Will the Desktop reconnect after I restart the computer?

Yes, the Desktop will automatically establish a connection with your PC every time Windows restarts.

Will my *Bluetooth* Keyboard work prior to Windows loading?

At this time, the *Bluetooth* Keyboard will only operate inside the Windows environment. You must use a keyboard that is connected directly to your computer to access your system BIOS. Future firmware upgrades for the *Bluetooth* USB Adapter that is included with this product will allow your *Bluetooth* Keyboard to function prior to Windows booting.

FAQs

What does the scroll wheel LED indicate?

- A slow blink every three seconds indicates normal operation.
- A rapid blink indicates that the mouse is in connection mode and is ready to be discovered and connected.
- Intermittent rapid blinking (every three seconds) indicates the battery is low.

What does the keyboard LED indicate?

- Blinks once every second – Keyboard in Discoverable mode.
- Blinks every four seconds – Normal operation mode.
- Constantly on – Replace batteries

Can I connect multiple *Bluetooth* Keyboards and Mice to the same computer?

Yes, you may. *Bluetooth* can support up to seven simultaneous connections. Simply follow the pairing and connection instructions in this User Manual to add *Bluetooth* Keyboard or Mouse connections to your computer.

FAQs

Can I use rechargeable AA batteries with the Desktop?

Yes, you may.

Can my Desktop connect to other *Bluetooth* devices or adapters?

Yes, it can, as long as the other *Bluetooth* device supports the Human Interface Device (HID) profile. Check with the device manufacturer to see if your device supports HID Profiles. For WIDCOMM software users, you must have BTW version 1.4 or higher.

Can my Microsoft *Bluetooth* Keyboard and Mouse connect to my Belkin *Bluetooth* USB Adapter included with this package?

Yes, it can. Follow the Keyboard and Mouse connection procedure as described above in this User Manual.

Can I connect the Belkin *Bluetooth* Keyboard and the Microsoft *Bluetooth* Keyboard to the same computer at the same time?

Yes, you can.

BATTERY AND SAFETY INFORMATION

General Precautions

Keep batteries out of reach of children.

Do not mix old and new batteries or batteries of different types (for example, carbon and alkaline batteries).

Always remove old, weak, or worn-out batteries promptly and recycle or dispose of them in accordance with local and national disposal regulations.

If a battery leaks, remove all batteries and recycle or dispose of them in accordance with the battery manufacturer's instructions and local and national disposal regulations. Before inserting new batteries, thoroughly clean the battery compartment with a damp paper towel, or follow the battery manufacturer's recommendations for cleanup. If fluid from the battery comes into contact with skin or clothes, flush skin with water immediately.

Remove the batteries if your device is to be stored for longer than a month without being used.

BATTERY AND SAFETY INFORMATION

Special Precautions

The precautions below are to prevent the sudden release of electrolytes, which these prohibited actions can cause:

Do not open, puncture, or mutilate the batteries.

Do not heat batteries.

Do not use a fire to dispose of batteries.

Released battery electrolyte is corrosive, can cause damage to the eyes and skin, and may be toxic if swallowed.

Product Disposal Information

Dispose of this product in accordance with local and national disposal regulations.

INFORMATION

DECLARATION OF CONFORMITY WITH FCC RULES FOR ELECTROMAGNETIC COMPATIBILITY

We, Belkin Corporation, of 501 West Walnut Street, Compton, CA 90220, declare under our sole responsibility that the products,

F8T040, F8T041, F8T005

to which this declaration relates, comply with Part 15 of the FCC Rules. Operation is subject to the following two conditions: (1) this device may not cause harmful interference, and (2) this device must accept any interference received, including interference that may cause undesired operation.

Caution: Exposure to Radio Frequency Radiation.

The radiated output power of this device is far below the FCC radio frequency exposure limits. Nevertheless, the device shall be used in such manner that the potential for human contact normal operation is minimised.

When connecting an external antenna to the device, the antenna shall be placed in such a manner to minimise the potential for human contact during normal operation. In order to avoid the possibility of exceeding the FCC radio frequency exposure limits, human proximity to the antenna shall not be less than 20cm (8 inches) during normal operation.

Federal Communications Commission Notice

This equipment has been tested and found to comply with the limits for a Class B digital device, pursuant to Part 15 of the FCC Rules. These limits are designed to provide reasonable protection against harmful interference in a residential installation.

INFORMATION

This equipment generates, uses, and can radiate radio frequency energy. If not installed and used in accordance with the instructions, it may cause harmful interference to radio or television reception, which can be determined by turning the equipment off and on, the user is encouraged to try and correct the interference by one or more of the following measures:

- Reorient or relocate the receiving antenna.
- Increase the distance between the equipment and the receiver.
- Connect the equipment to an outlet on a circuit different from that to which the receiver is connected.
- Consult the dealer or an experienced radio/TV technician for help.

Modifications

The FCC requires the user to be notified that any changes or modifications to this device that are not expressly approved by Belkin Corporation may void the users authority to operate the equipment.

Canada-Industry Canada (IC)

The wireless radio of this device complies with RSS 139 & RSS 210 Industry Canada. This Class B digital complies with Canadian ICES-003.

Cet appareil numérique de la classe B conforme à la norme NMB-003 du Canada.

Europe-European Union Notice

Radio products with the CE alert marking comply with the R&TTE Directive (1995/5/EC) issued by the Commission of the European Community.



INFORMATION

Compliance with this directive implies conformity to the following European Norms (in brackets are the equivalent international standards).

- EN 60950 (IEC60950) – Product Safety
- EN 300 328 Technical requirement for radio equipment
- ETS 300 826 General EMC requirements for radio equipment.

To determine the type of transmitter, check the identification label on your Belkin product.



Products with the CE marking comply with the EMC Directive (89/336/EEC) and the Low Voltage Directive (72/23/EEC) issued by the Commission of the European Community. Compliance with these directives implies conformity to the following European Norms (in brackets are the equivalent international standards).

- EN 55022 (CISPR 22) – Electromagnetic Interference
- EN 55024 (IEC61000-4-2,3,4,5,6,8,11)- Electromagnetic Immunity
- EN 61000-3-2 (IEC610000-3-2) - Power Line Harmonics
- EN 61000-3-3 (IEC610000) – Power Line Flicker
- EN 60950 (IEC60950) – Product Safety

Products that contain the radio transmitter are labelled with the CE alert marking and may also carry the CE logo.



INFORMATION

Belkin Corporation Limited Two-Year Product Warranty

Belkin Corporation warrants this product against defects in materials and workmanship for its warranty period. If a defect is discovered, Belkin will, at its option, repair or replace the product at no charge provided it is returned during the warranty period, with transportation charges prepaid, to the authorised Belkin dealer from whom you purchased the product. Proof of purchase may be required.

This warranty does not apply if the product has been damaged by accident, abuse, misuse, or misapplication; if the product has been modified without the written permission of Belkin; or if any Belkin serial number has been removed or defaced.

THE WARRANTY AND REMEDIES SET FORTH ABOVE ARE EXCLUSIVE IN LIEU OF ALL OTHERS, WHETHER ORAL OR WRITTEN, EXPRESSED OR IMPLIED. BELKIN SPECIFICALLY DISCLAIMS ANY AND ALL IMPLIED WARRANTIES, INCLUDING, WITHOUT LIMITATION, WARRANTIES OF MERCHANTABILITY AND FITNESS FOR A PARTICULAR PURPOSE.

No Belkin dealer, agent, or employee is authorised to make any modification, extension, or addition to this warranty.

BELKIN IS NOT RESPONSIBLE FOR SPECIAL, INCIDENTAL, OR CONSEQUENTIAL DAMAGES RESULTING FROM ANY BREACH OF WARRANTY, OR UNDER ANY OTHER LEGAL THEORY, INCLUDING BUT NOT LIMITED TO, LOST PROFITS, DOWNTIME, GOODWILL, DAMAGE TO OR REPROGRAMMING OR REPRODUCING ANY PROGRAM OR DATA STORED IN, OR USED WITH, BELKIN PRODUCTS.

Some states do not allow the exclusion or limitation of incidental or consequential damages or exclusions of implied warranties, so the above limitations of exclusions may not apply to you. This warranty gives you specific legal rights, and you may also have other rights that vary from state to state.



belkin.com

Belkin Corporation

5501 West Walnut Street
Compton • CA • 90220-5221 • USA
Tel: +1 310 898 1100
Fax: +1 310 898 1111

Belkin Ltd.

Express Business Park • Shipton Way
Rushden • NN10 6GL • United Kingdom
Tel: +44 (0) 1933 35 2000
Fax: +44 (0) 1933 31 2000

Belkin B.V.

Boeing Avenue 333
1119 PH Schiphol-Rijk • The Netherlands
Tel: +31 (0) 20 654 7300
Fax: +31 (0) 20 654 7349

Belkin GmbH

Hanebergstrasse 2
80637 München • Germany
Tel: +49 (0) 89 143405 0
Fax: +49 (0) 89 143405 100

Belkin Components SAS

5 Rue du Petit Robinson • 3ème étage
78350 Jouy en Josas • France
Tel: +33 (0) 1 34 58 14 00
Fax: +33 (0) 1 39 46 62 89

Belkin Ltd

7 Bowen Crescent • West Gosford
NSW 2250 • Australia
Tel: +61 (0) 2 4372 8600
Fax: +61 (0) 2 4372 8603

Belkin Tech Support

Europe: 00 800 223 55 460
US: 877 736 5771

P74374uk

© 2003 Belkin Corporation. All rights reserved. All trade names are registered trademarks of respective manufacturers listed. The *Bluetooth* name and the *Bluetooth* trademarks are owned by *Bluetooth* SIG, Inc., and are used by Belkin Corporation under license.

Mac OS is a trademark of Apple Computer, Inc. registered in the U. S. and other countries.

Download from www.Somanuals.com. All Manuals Search And Download.

Free Manuals Download Website

<http://myh66.com>

<http://usermanuals.us>

<http://www.somanuals.com>

<http://www.4manuals.cc>

<http://www.manual-lib.com>

<http://www.404manual.com>

<http://www.luxmanual.com>

<http://aubethermostatmanual.com>

Golf course search by state

<http://golfingnear.com>

Email search by domain

<http://emailbydomain.com>

Auto manuals search

<http://auto.somanuals.com>

TV manuals search

<http://tv.somanuals.com>