



8" DUAL CONE LOUDSPEAKER AVAILABLE WITH TRANSFORMER

C5A
Series

ONE



C5A

SPECIFICATIONS

Size: 8" (203mm)
Power Handling: 15 Watts program, 10W RMS
Sensitivity (1W/1M): 96dB Peak, 93dB Average
Impedance: Nominal, 8 Ohm
Frequency Response: 50Hz - 18kHz (Nominal), 80 - 9kHz \pm 5dB
Dispersion: 105° (2kHz Octave Band, -6dB Points)
Diameter & Depth: 8.125" (206mm) Dia. & 2.625" (67mm) Deep
Mounting Dimensions: 7.625" (194mm) Bolt Circle
Cone Material: Treated Paper
Surround Material & Damping: Self Edge
Flux Density: 9,200 Gauss, .92 Tesla
Magnet Weight - Nominal: 5 oz., (132g)
Basket Material: Stamped Plated 20 ga. CRS
VC Diameter: 1" (25mm)
VC Material: Copper
VC Former Material: Black Anodized Aluminum
VC Winding Width: .190"
Top Plate Thickness: .180"
Weight: 22 oz. (607g)

THIELE-SMALL PARAMETERS

Pe: 10 Watts **Qes:** 1.57 **Sd:** 33.2 (in²)
Fs: 128Hz **Qms:** 4.2 **Le@1kHz:** .26 mH
Xmax: .05" **BL:** 5.6 N/A **MMs:** .36 oz.
Resistance: 6.1 Ohms **Efficiency:** 1.3% **Cms:** .027 in./lb.
Qts: 1.15 **Vas:** .35 (ft³)

FEATURES

- Industry Standard Value Loudspeaker with Proven Performance
- Available with Factory-Installed Line-Matching Transformer
- Ideal for Multi-Purpose Commercial, Industrial and Institutional Use
- Mounts a Wide Selection of Atlas Sound Baffles

APPLICATIONS

Utilize Atlas Sound's dual-cone loudspeaker for voice transmission, music and signal reproduction in commercial, industrial, and institutional applications. Model C5A is an economical, multi-purpose loudspeaker with choice of eight factory-installed line matching transformers to meet a variety of value-conscious project requirements. (For more information on Atlas Sound transformers, see sales sheet #SL1-1369.)

GENERAL DESCRIPTION

Model C5A is a reliable, economically priced 15W loudspeaker that offers many features found in speakers costing considerably more. It includes a curvilinear, treated-paper cone for lower harmonic distortion. It is also equipped with a full 1" diameter copper voice coil with a black-anodized aluminum former for better power dissipation.

Model C5A operates within a frequency response range of 50Hz - 18kHz with a sensitivity of 96dB and a dispersion angle of 105°.

It mounts a wide variety of Atlas Sound round and square baffles and enclosures to meet functional and aesthetic application requirements.

| SPKR./ XFMR. MODELS | INCLUDES XFMR. | TRANSFORMER SPECIFICATIONS | | | | | | |
|---------------------------|-------------------|----------------------------|-----------------------------|----------------------------|------------------------|-------------------|---------------------|-----------------|
| | | PRIMARY VOLTAGE | XFMR. FREQUENCY RESPONSE | PRIMARY TAPS (WATTS) | SECONDARY IMPEDANCE | INSERTION LOSS | CORE SIZE | POWER RATING |
| C5AT25 | LT-25 | 25V | 100Hz - 10kHz, \pm 1.5dB | .5, 1, 2 & 5 | 8 Ω | 1.5dB | ½" x ¾" (13 x 16mm) | 5W |
| C5AT70 | LT-70 | 70.7V | 100Hz - 10kHz, \pm 1.5dB | .5, 1, 2, 4 & 5 | 8 Ω | 1.5dB | ½" x ¾" (13 x 16mm) | 5W |
| C5AT72 | LT-72 | 25/70.7V | 100Hz - 10kHz, \pm 1.5dB | .5, 1, 2 & 4 | 8 Ω | 1.5dB | ½" x ¾" (13 x 16mm) | 4W |

Specifications subject to change without notice



1601 JACK MCKAY BLVD. / ENNIS, TEXAS 75119 U.S.A.
 TELEPHONE: (800) 876-3333 / FAX (800) 765-3435

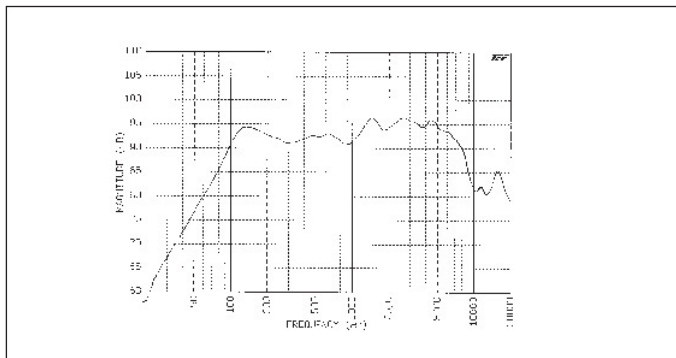
AtlasSound.com

73

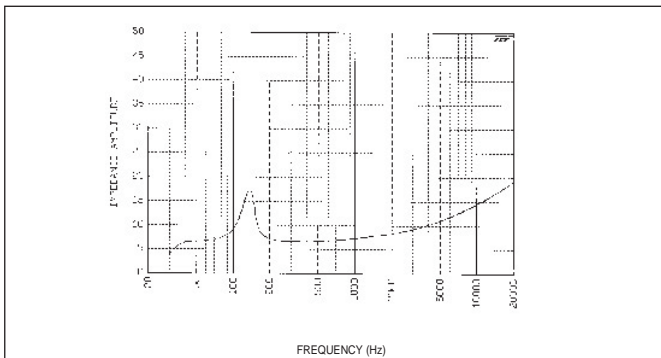
ARCHITECT & ENGINEER SPECIFICATIONS

Unit shall be Atlas Sound 8" loudspeaker Model _____ or loudspeaker/transformer combination Model _____ (utilizing line-matching transformer Model _____). It shall have a (5 oz.) ceramic magnet and a seamless cone. Frequency response range shall be _____. Sensitivity shall be _____. Voice coil shall be black anodized to help

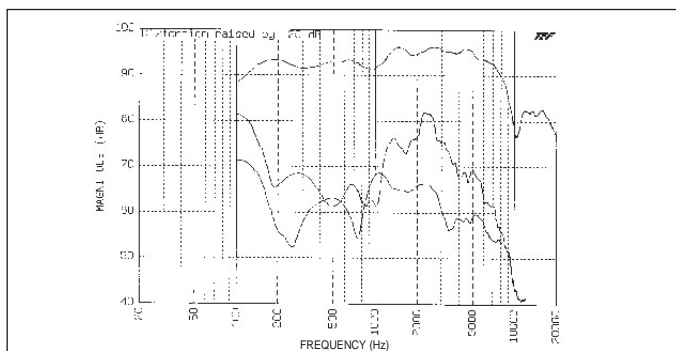
dissipate heat, have an impedance of 8 Ohms and a diameter of 1" (25mm). Transformer primary voltage shall be _____ with a frequency response range of _____. Insertion loss shall not exceed _____.



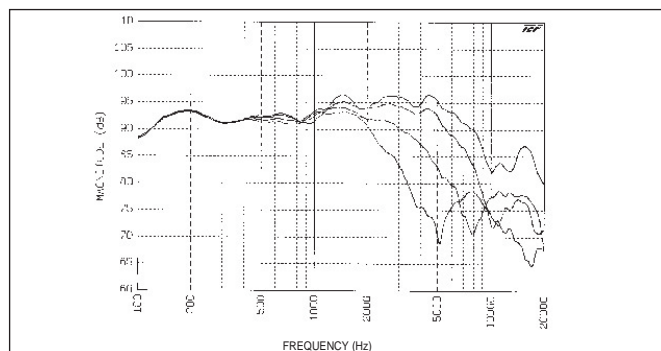
C5A : Frequency Response



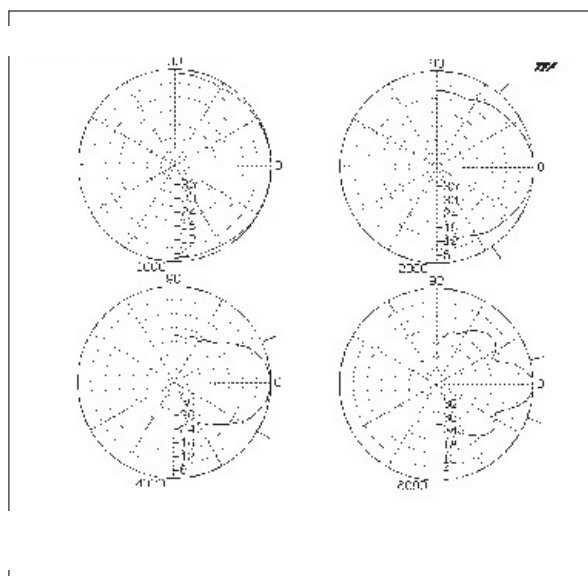
C5A: Impedance



C5A : Fundamental vs 2nd & 3rd Harmonic (Raised 20dB)@ 1 watt



C5A: Frequency Response Overlay at 0, 15, 30 & 45 degrees



Octave Bands Normalized to Zero On Axis

Specifications subject to change without notice



1601 JACK MCKAY BLVD. / ENNIS, TEXAS 75119 U.S.A.
TELEPHONE: (800) 876-3333 / FAX (800) 765-3435

AtlasSound.com

Free Manuals Download Website

<http://myh66.com>

<http://usermanuals.us>

<http://www.somanuals.com>

<http://www.4manuals.cc>

<http://www.manual-lib.com>

<http://www.404manual.com>

<http://www.luxmanual.com>

<http://aubethermostatmanual.com>

Golf course search by state

<http://golfingnear.com>

Email search by domain

<http://emailbydomain.com>

Auto manuals search

<http://auto.somanuals.com>

TV manuals search

<http://tv.somanuals.com>