

ASUS[®] **LS201 Series** **LCD Monitor**

Quick Start Guide

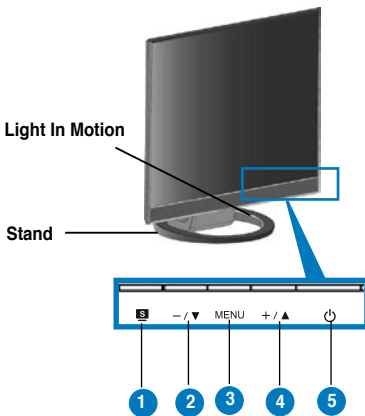


Safety information

- Before setting up the monitor, carefully read all the documentation that came with the package.
- To prevent fire or shock hazard, never expose the monitor to rain or moisture.
- The monitor should be operated only from the type of power source indicated on the label. If you are not sure of the type of power supplied to your home, consult your dealer or local power company.
- Use the appropriate power plug which complies with your local power standard.
- To ensure satisfactory operation, use the monitor only with UL listed computers which have appropriate configured receptacles marked between 100-240V AC.
- If you encounter technical problems with the monitor, contact a qualified service technician or your retailer.

Monitor introduction

Front view



1. SPLENDID™ mode hotkey
2. Decrease button
3. MENU button
4. Increase button/Brightness hotkey
5. Power button

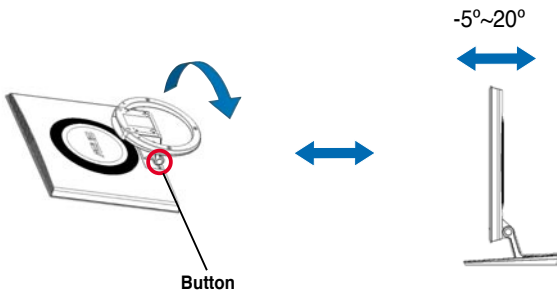
Rear view



6. VGA port
7. DVI port
8. DC-IN port

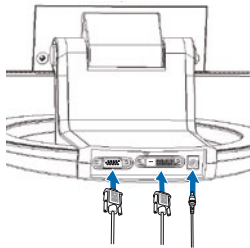
2.1 Unfolding the monitor

The monitor is folded in the package. To unfold the monitor, hold the back cover and press the Button with one hand, and carefully tilt the monitor forward with the other hand until the Button rebounds with a click.





2.2 Connecting the cables

1. Connect the cables as the following instructions:



- To connect the power adapter: first, connect the adapter cord securely to the monitor's DC-in port. Then, connect the power plug to the adapter port with the other end to a power outlet.
- To connect the VGA/DVI cable:
 - a. Plug the VGA/DVI connector to the LCD monitor's VGA/DVI port.
 - b. Connect the other end of the VGA/ DVI cable to your computer's VGA/ DVI port.
 - c. Tighten the two screws to secure the VGA/DVI connector.

2.3 Turning the monitor on

Gently press the power button . See page 1-2 for the location of the power button. The power indicator  lights up in blue to show that the monitor is ON.

2.3 Adjusting the monitor

- For optimal viewing, we recommend that you look at the full face of the monitor, then adjust the monitor to the angle that is most comfortable for you.
- Hold the stand to prevent the monitor from falling when you change its angle.
- You can adjust the monitor's angle from -5° to 20° .



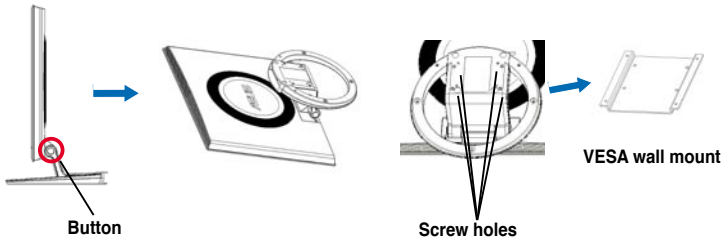
It is normal that the monitor slightly shakes while you adjust the the viewing angle.

2.4 Installing the monitor to a VESA wall mount

The foldable stand of the LS201 LCD monitor is specially designed for a VESA wall mount.

To install the monitor to a VESA wall mount:

1. Have the front of the monitor face down on a table.
2. Press down the button on the arm and fold the stand toward the back of the monitor until the button rebounds with a click.
3. Fix the monitor on the VESA wall mount using a screw driver to fasten four screws into the four screw holes on the monitor stand.



We recommend that you cover the table surface with soft cloth to prevent damage to the monitor.

Free Manuals Download Website

<http://myh66.com>

<http://usermanuals.us>

<http://www.somanuals.com>

<http://www.4manuals.cc>

<http://www.manual-lib.com>

<http://www.404manual.com>

<http://www.luxmanual.com>

<http://aubethermostatmanual.com>

Golf course search by state

<http://golfingnear.com>

Email search by domain

<http://emailbydomain.com>

Auto manuals search

<http://auto.somanuals.com>

TV manuals search

<http://tv.somanuals.com>