

LIMITED ONE YEAR WARRANTY

Chaney Instrument Company warrants that all products it manufactures to be of good material and workmanship and to be free of defects if properly installed and operated for a period of one year from date of purchase. REMEDY FOR BREACH OF THIS WARRANTY IS EXPRESSLY LIMITED TO REPAIR OR REPLACEMENT OF DEFECTIVE ITEMS. Any product which, under normal use and service, is proven to breach the warranty contained herein within ONE YEAR from date of sale will, upon examination by Chaney, and at its sole option, be repaired or replaced by Chaney. In all cases, transportation costs and charges for returned goods shall be paid for by the purchaser. Chaney hereby disclaims all responsibility for such transportation costs and charges. This warranty will not be breached, and Chaney will give no credit for products it manufactures which shall have received normal wear and tear, been damaged, tampered, abused, improperly installed, damaged in shipping, or repaired or altered by others than authorized representatives of Chaney.

THE ABOVE-DESCRIBED WARRANTY IS EXPRESSLY IN LIEU OF ALL OTHER WARRANTIES, EXPRESS OR IMPLIED, AND ALL OTHER WARRANTIES ARE HEREBY EXPRESSLY DISCLAIMED, INCLUDING WITHOUT LIMITATION THE IMPLIED WARRANTY OF MERCHANTABILITY AND THE IMPLIED WARRANTY OF FITNESS FOR A PARTICULAR PURPOSE. CHANEY EXPRESSLY DISCLAIMS ALL LIABILITY FOR SPECIAL, CONSEQUENTIAL OR INCIDENTAL DAMAGES, WHETHER ARISING IN TORT OR BY CONTRACT FROM ANY BREACH OF THIS WARRANTY. SOME STATES DO NOT ALLOW THE EXCLUSION OR LIMITATION OF INCIDENTAL OR CONSEQUENTIAL DAMAGES, SO THE ABOVE LIMITATION OR EXCLUSION MAY NOT APPLY TO YOU. CHANEY FURTHER DISCLAIMS ALL LIABILITY FROM PERSONAL INJURY RELATING TO ITS PRODUCTS TO THE EXTENT PERMITTED BY LAW. BY ACCEPTANCE OF ANY OF CHANEY'S EQUIPMENT OR PRODUCTS, THE PURCHASER ASSUMES ALL LIABILITY FOR THE CONSEQUENCES ARISING FROM THEIR USE OR MISUSE. NO PERSON, FIRM OR CORPORATION IS AUTHORIZED TO ASSUME FOR CHANEY ANY OTHER LIABILITY IN CONNECTION WITH THE SALE OF ITS PRODUCTS. FURTHERMORE, NO PERSON, FIRM OR CORPORATION IS AUTHORIZED TO MODIFY OR WAIVE THE TERMS OF THIS PARAGRAPH, AND THE PRECEDING PARAGRAPH, UNLESS DONE IN WRITING AND SIGNED BY A DULY AUTHORIZED AGENT OF CHANEY. THIS WARRANTY GIVES YOU SPECIFIC LEGAL RIGHTS, AND YOU MAY ALSO HAVE OTHER RIGHTS WHICH VARY FROM STATE TO STATE.

For in-warranty repair, please contact:

Customer Care Department
Chaney Instrument Company
965 Wells Street
Lake Geneva, WI 53147

This device complies with part 15 of the FCC rules. Operation is subject to the following two conditions:

- 1- This device may NOT cause harmful interference, and
- 2- This device must accept any interference received, including interference that may cause undesired operation.

NOTE: This equipment has been tested and found to comply with the limits for a Class B digital device, pursuant to Part 15 of the FCC rules. These limits are designed to provide reasonable protection against harmful interference in a residential installation. This equipment generates, uses and can radiate radio frequency energy and, if not installed and used in accordance with the instructions, may cause harmful interference to radio communications. However, There is no guarantee that interference will not occur in a particular installation. If this equipment does cause harmful interference to radio or television reception, which can be determined by turning the equipment off and on, the user is encouraged to try to correct the interference by one or more of the following measures:

- Reorient or relocate the receiving antenna.
- Increase the separation between the equipment and the receiver.
- Connect the equipment into an outlet on a circuit different from that to which the receiver is connected.
- Consult the dealer or an experienced radio/TV technician for help.

NOTE: The manufacturer is not responsible for any radio or TV interference caused by unauthorized modifications to this equipment. Such modifications could void the user authority to operate the equipment.

01098CDI INST 060512

Imported by:
Costco Wholesale Corporation
P.O. Box 34535
Seattle, WA 98124-1535
U.S.A.
1-800-774-2678
Shop at www.costco.com

Download from Www.Somanuals.com. All Manuals Search And Download.

ACURITE
DESIGNED TO WORK FOR YOU™

ITEM# 661262



Weather Forecaster
model# 01098CDI

Instruction Manual

Introduction

Thank You for purchasing this AcuRite® product. Please read through this manual in it's entirety to fully enjoy the benefits and features of this product. Please keep this manual for future reference.

Momentary Backlight Button (on top)

Outdoor Temperature

Outdoor Humidity

Weather Forecast

Barometric Pressure & Graph

Intelli-Time® Clock

Month / Day

Indoor Temperature

Indoor Humidity



SETUP

Battery Choice & Temperature Range

Extended periods of cold temperatures (below -4°F / -20°C) can cause alkaline batteries to function improperly. This will cause the outdoor wireless sensor to stop transmitting temperature readings. Use lithium batteries in these low temperature conditions to ensure continued operation for wireless sensors placed outdoors. NOTE: Rechargeable batteries are not recommended due to higher operating voltages.

LITHIUM BATTERIES -40°F (-40°C) (70°C) 158°F

ALKALINE BATTERIES -4°F (-20°C) (70°C) 158°F

A/B/C Wireless Selection

To allow for more than one weather station and wireless sensor network to be used in close proximity, the display unit and the wireless sensor have a small switch labeled "A B C" within the battery compartments. This switch selects one of 3 wireless modes to use, and both switches **MUST** be set in matching positions (either A, B, or C) for wireless communication to take place successfully.

Installing Batteries - Wireless Sensor

Remove the battery compartment cover.

Install 2 fresh "AA" batteries as shown here.

Replace the battery compartment cover. **BATTERIES MUST BE INSTALLED FOR THE SENSOR TO OPERATE**

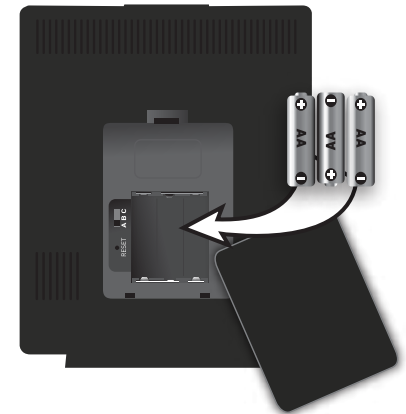


Installing Batteries - Display Unit

Remove the battery compartment cover.

Install 3 fresh "AA" batteries into the battery compartment.

Replace the battery compartment cover.



WARNING: THIS PRODUCT CONTAINS A BUTTON-CELL BATTERY. IF SWALLOWED, IT COULD CAUSE SEVERE INJURY OR DEATH IN JUST 2 HOURS. SEEK MEDICAL ATTENTION IMMEDIATELY IF INGESTED.



About the Intelli-Time® Clock

This weather station is equipped with Intelli-Time® technology. Intelli-Time clock adjusts itself for Daylight Saving Time (DST). **All you need to do is select your Time Zone and Daylight Saving Time preferences.**

Display Unit : Basic Setup

Press and hold the "⚙️" (SET) button for 3 seconds to enter in to SET MODE. Once in set mode, the preference you are currently setting will blink on the display.

Setup Indicators will be located in this area



To **adjust** the currently selected (flashing) preference item, press the "▲" or "▼" buttons. (press and HOLD to fast adjust).

To **save** your adjustments, press the "⚙️" button again to move on to adjusting the next preference. The preference set order is as follows:

TIME ZONE (PST MST CST EST AST HAST AKST) **REQUIRED**
DST (Daylight Saving Time ON or OFF) **REQUIRED**

- CLOCK HOUR
- CLOCK MINUTE
- CALENDAR MONTH
- CALENDAR DATE
- CALENDAR YEAR
- TEMPERATURE SCALE (°F or °C)
- BAROMETRIC PRESSURE SCALE (inHg or hPa)

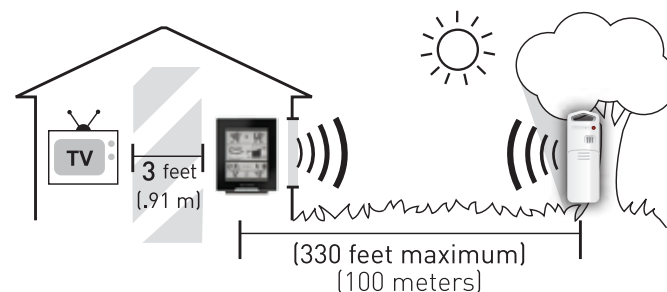
You will automatically exit SET MODE if no buttons are depressed for 30 seconds. You may enter basic setup mode again at any time by pressing the "⚙️" button.

Basic Setup is Now Complete

The sensor will soon send a signal to the display unit and the two units will be synchronized. It may take a few minutes for synchronization to be complete.

Now that setup is complete, you must choose a location to place the sensor and the display unit. The sensor **MUST** be placed less than 330 feet (100 meters) away from the display unit.

This weather station uses radio frequency for communication, which is susceptible to interference from other electronic devices and large metallic items or thick walls. Always place both units at least 3 feet (.91 m) away from appliances (TV, microwave, radios, etc.) or objects that may interfere with the wireless communication (large metal surfaces, thick stone walls, etc.).



Placement of Display Unit

Place the display unit in a dry area free of dirt and dust. To help ensure an accurate indoor temperature and humidity measurement, be sure to place the display unit out of direct sunlight, and away from any heat sources or vents in your home. There are 2 placement options for the display unit. You may hang the main unit on a wall using the integrated hang hole. Alternatively, you may place the main unit on a table top or other flat surface using the included table top display stand.

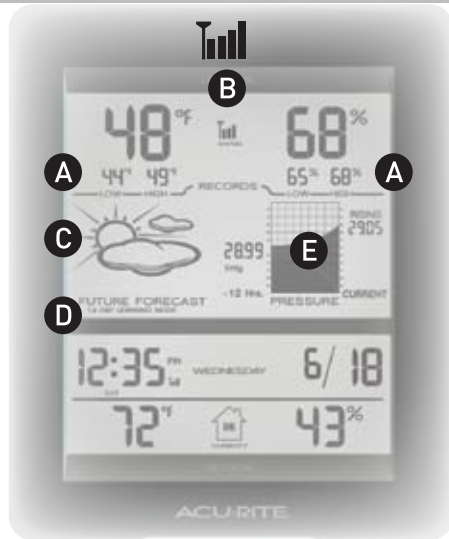
Placement of Sensor

The outdoor sensor **MUST BE PLACED OUTDOORS** to observe outdoor temperatures and humidity. The sensor must be placed less than 330 feet (100 m) from the display unit. The sensor is water **resistant** and is designed for general outdoor use. However, to extend the life of the product, place the sensor in an area protected from direct weather elements.

To ensure an accurate outdoor temperature measurement, be sure the sensor is placed out of direct sunlight and away from any heat sources.

There are 2 placement options for the sensor. You may hang it using one of the two integrated hang holes, or use string (not included) to hang it from a suitable location like a well covered tree branch.





A Daily High & Low

The daily high and low records are displayed for the outdoor temperature and humidity. These records are automatically cleared daily at midnight.

B Wireless Signal Reception Icon

The display unit has a signal reception icon near the outdoor temperature display area. If there are a low number of "bars" present, you may experience no temperature display ("- - ") or inaccuracy. In either case, you may need to relocate one or both of the units. If most or all 4 of the bars are present, wireless reception is good and no action is required.

C Forecast Icon

This feature gives you the predicted weather forecast for the next 12 to 24 hours based on an advanced algorithm that includes barometric pressure and temperature. This weather station will provide the most accurate forecast that a single station weather instrument can provide.

EXAMPLE OF WEATHER FORECAST DISPLAY ICONS	RAIN LIKELY (flashing=stormy)	LIGHT RAIN LIKELY 	PARTLY CLOUDY 	CLEARING
RAIN/SNOW MIX LIKELY (flashing=stormy)	SNOW LIKELY 	LIGHT SNOW LIKELY 	CLOUDY 	MOSTLY CLOUDY

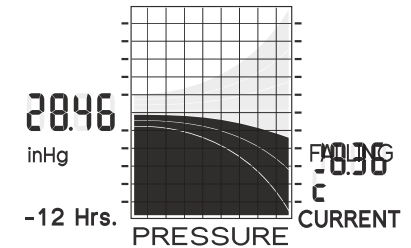
Please visit AcuRite.com for the complete list of forecast icon definitions

D 14-Day Learning Mode

This weather station has a patented 14-day "Learning Mode" calibration process. During this Learning Mode, the weather station will make altitude calculations that may affect the accuracy of the forecast. Once the Learning Mode process is complete, the Learning Mode icon will disappear from the display unit and the weather forecast is ready for superior operation.

E Atmospheric Pressure: History & Current



This weather station has a pressure graph that tracks and displays the barometric pressure 12-hours in the past and displays the current barometric pressure. Additionally, the graph will automatically display the "FALLING", "STEADY" OR "RISING" icon and a curve to represent the rate of change over the previous 12-hour time period.



About Atmospheric Pressure

Atmospheric Pressure is defined as the pressure at any location on the Earth, caused by the weight of the column of air above it. At sea level, atmospheric pressure has an average value of one atmosphere and gradually decreases as altitude increases. Also called barometric pressure.

The weight of the atmosphere that envelopes Earth exerts pressure on all points of the planet's surface. Meteorologists use barometers to measure this atmospheric pressure (also called barometric pressure). At sea level the atmospheric pressure is approximately 1 kilogram per square centimeter (14.7 pounds per square inch), which will cause a column of mercury in a mercury barometer to rise 760 millimeters (30.4 inches). Variations in the atmospheric pressure greatly affect the weather. Low pressure generally brings rain. In areas of low air pressure, the air is less dense and relatively warm, which causes it to rise. The expanding and rising air naturally cools, and the water vapor in the air condenses, forming clouds and the drops that fall as rain. In high pressure areas, the air is dense and relatively cool, which causes it to sink. The water vapor in the sinking air doesn't condense, resulting in clear skies.

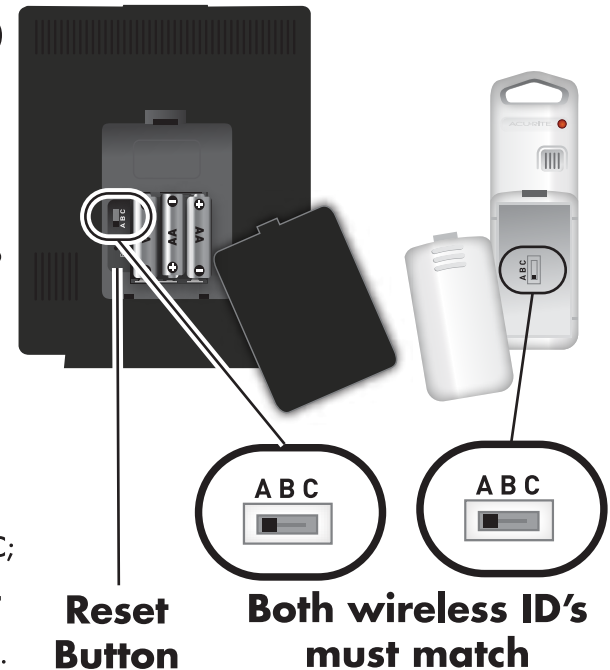
Problem	Possible Solution(s)
<p>Low or NO Wireless Sensor Reception</p>  <p>low reception</p>  <p>NO reception no bars and flashing "--" temp/humidity data</p>	<p>Relocate the display console and/or the wireless sensor. Both units must be within 330 feet (100 meters) from each other. Make sure both units are placed at least 3 feet (.91 m) from other electronic appliances and devices that may interfere with the wireless communication (such as TV's, microwaves, computers etc). NOTE: It may take up to 20 minutes for the display console to re-synchronize with the sensor when batteries are replaced. Use lithium batteries in sensor when temperature is below -4°F (-20°C). Make sure the A-B-C switch selection in the battery compartments of the display unit and sensor match.</p>
<p>Forecast Seems Inaccurate</p>	<p>As with any weather forecast, 100% accuracy is not possible. However, this weather station has a patented "fourteen day learning mode" calibration process. During this learning mode the weather station will make altitude calculations that may affect the accuracy of the forecast. Once the 14 day learning mode process is complete, the learning mode icon will disappear and the weather forecast should be ready for superior operation.</p> <p>Make sure the wireless outdoor sensor is placed outdoors and is placed in a location that will most accurately report the outside temperature and humidity conditions, these readings directly affect the forecast feature.</p>
<p>Display Console Screen Not Working</p>	<p>The display may fail to start properly due to static discharge.</p> <p>Batteries may need replacing. Check that batteries are correctly installed.</p> <p>Press the reset button located within the battery compartment of the display unit to reset the entire unit. Please note that all of the date and time information will need to be entered manually after a reset.</p>

Set Wireless ID

This wireless weather station uses long range 433mhz radio frequency for communication.

In the event that you have reception problems due to interference, both the display unit and the wireless sensor have a selectable wireless ID. The ID switches are located within the battery compartments of the display unit and the wireless sensor.

You may choose A, B or C; but both the display unit and the **wireless sensor ID's must match** for successful synchronization.



IMPORTANT NOTICE

YOUR PRODUCT MUST BE REGISTERED TO RECEIVE WARRANTY SERVICE

PRODUCT REGISTRATION

To receive product updates and information, Go to **www.AcuRite.com**



Have questions about product setup or operation? We're here to help!

24/7 Support: www.acurite.com

- › Product Setup & Demo Videos
- › Product Manuals
- › Frequently Asked Questions
- › Register your Product
- › Support Forum
- › Submit Feedback & Ideas



www.AcuRite.com



(877) 221-1252

SPECIFICATIONS

Batteries: 5 x "AA" (included)

Lithium Batteries Recommended in **Outdoor Sensor** if temperatures are below -4°F

Measurement Ranges

Outdoor Temperature: **-40°F to 158°F**
-40°C to 70°C

Outdoor Humidity: **1% to 99%**

Indoor Temperature: **32°F to 122°F**
0°C to 50°C

Indoor Humidity: **1% to 99%**

Wireless Range: 330 ft / 100 m MAX

Depending on home construction materials

ITEM# 66I262

MADE IN CHINA
HECHO EN CHINA

model#
01098CDI

Limited One
Year Warranty
Instructions &
Warranty Enclosed

www.AcuRite.com

Customer Care:
877-221-1252

Imported by:

Costco Wholesale Corporation
PO Box 34535
Seattle, WA 98124-1535
U.S.A.
1-800-774-2678
shop at www.costco.com

Patent numbers: 5,978,738; 6,076,044; 6,597,990; US 7,637,141 B2
AcuRite® is a registered trademark of the Chaney Instrument Co.
965 Wells St., Lake Geneva, WI 53147

PLEASE DISPOSE OF OLD OR DEFECTIVE BATTERIES IN AN ENVIRONMENTALLY SAFE WAY AND IN ACCORDANCE WITH YOUR LOCAL LAWS AND REGULATIONS.

BATTERY SAFETY: Clean the battery contacts and also those of the device prior to battery installation. Remove batteries from equipment which is not to be used for an extended period of time. Follow the polarity (+/-) diagram in the battery compartment. Promptly remove dead batteries from the device. Dispose of used batteries properly. Only batteries of the same or equivalent type as recommended are to be used. DO NOT incinerate used batteries. DO NOT dispose of batteries in fire, as batteries may explode or leak. DO NOT mix old and new batteries or types of batteries (alkaline/standard). DO NOT use rechargeable batteries. DO NOT recharge non-rechargeable batteries. DO NOT short-circuit the supply terminals.

Free Manuals Download Website

<http://myh66.com>

<http://usermanuals.us>

<http://www.somanuals.com>

<http://www.4manuals.cc>

<http://www.manual-lib.com>

<http://www.404manual.com>

<http://www.luxmanual.com>

<http://aubethermostatmanual.com>

Golf course search by state

<http://golfingnear.com>

Email search by domain

<http://emailbydomain.com>

Auto manuals search

<http://auto.somanuals.com>

TV manuals search

<http://tv.somanuals.com>