

PCMCIA Fax Modem 56K

Quick Installation Guide

REGULATORY STATEMENTS

FCC Part 68 Registration

The high speed PC card FAX/MODEM is registered with the FCC as compliant with the rules of Part 68, and use of this modem is subject to the following restrictions:

1. The Federal Communication Commission FCC has established rules which permit this device to be directly connected to the telephone network. Standardized jacks are used for these connections. This equipment should not be used on party lines or coin phones.
2. If this device is malfunctioning, it may also be causing harm to the telephone network; this device should be disconnected until the source of the problem can be determined and until repair has been made. If this is not done, the telephone company may temporarily disconnect service.
3. The telephone company may make changes in its facilities, equipment, operation and procedures; if such changes affect the compatibility or use of this device, the telephone company is required to give adequate notice of the with the FCC.
4. If the telephone company requests information on what equipment is connected to their lines, inform them of:
 - a. The telephone number which this unit is connected to
 - b. The ringer equivalence number.
 - c. The USOC jack required.
 - d. The FCC Registration number.

Items (b) and (d) are indicated on the label. The Ringer Equivalence Number (REN) is used to determine how many devices can be connected to your telephone line. In most areas, the sum of the REN's of all the devices on any one line should not exceed 5.0. If too many devices are attached, they may not ring properly.

FCC Part 15 Registration

This equipment has been tested and found to comply with the limits for a Class B digital device, pursuant to Part 15 of the FCC Rules. These limits are designed to provide reasonable protection against harmful interference in a residential installation. This equipment generates, uses and can radiate radio frequency energy, and if not installed and used in accordance with the instructions, may cause harmful interference to radio communications. However, there is no guarantee that interference will not occur in a particular installation. If this equipment does cause harmful interference to radio or television reception, which can be determined by turning off and on, the user is encouraged to try to correct the interference by one or more of the following measures:

- Reorient or relocate the receiving antenna.
- Increase the distance between the equipment and receiver.
- Connect the equipment into an outlet on a circuit different from that to which the receiver is connected.
- Consult an experienced radio/TV technician for help.

CTR 21 pan-European Certification

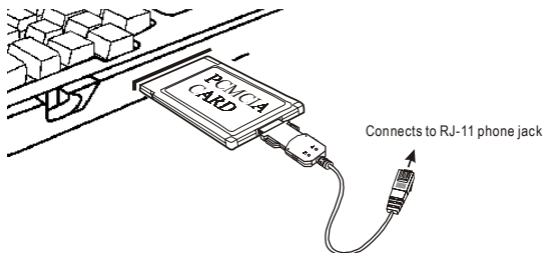
This equipment has been approved in accordance with Council Decision 98/482/EC for pan-European single terminal connection to the public switched telephone network (PSTN). However, due to differences between the individual PSTNs provided in different countries, the approval does not, of itself, give an unconditional assurance of successful operation on every PSTN network termination point. In the event of problems, you should contact your equipment supplier in the first instance.

This device is designed to work with the notified networks in all EC member states. Nevertheless, some of the network services in individual countries might not be supported, but they will not affect the normal data and fax applications. For example, the metering charge service in Germany. Besides you may encounter difficulty of using PULSE dialing function in some of the countries, such as Nordic countries. This kind of network compatibility is dependent on the physical and software settings of this device. If the users are desired to use this device on those networks, they should contact the vendor or supplier first.

HARDWARE INSTALLATION

1. Locate the PCMCIA slot of your system.
2. Align the PCMCIA FAX MODEM 56K PC Card toward the PCMCIA slot. Push evenly and steadily until it is seated.

Notebook



3. Connect the other end of the PC Card cable to the telephone line outlet.
4. You are now ready to continue the software installation.

CAUTION

To reduce the risk of fire, use only No. 26 AWG or larger telecommunication line cord.

For Windows NT does not support "Hot Insert/Remove", be sure to complete the hardware installation as described above before you start Windows NT and software installation.

SOFTWARE INSTALLATION

Installation for Windows 98

1. As soon as the PCMCIA Fax Modem 56K PC is inserted into the PCMCIA slot, Windows automatically detects the new hardware device and the following message will be prompted.
2. Insert the device driver compact disc into your CD-ROM drive. Click **Next**.
3. Select **Specify a location** when the following figure appears. Enter the CD-ROM drive letter followed by **driver\win98**. Click **Next**. Or you may click the **Browse** button to select the **driver\win98** folder in your CD-ROM drive.



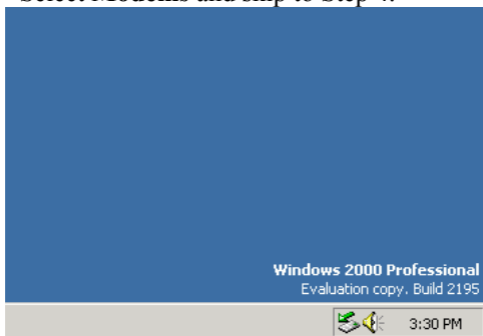
4. When the following figure appears, click **Finish**. The Installation program will continue.
5. Click **Next** to continue.
6. Select **Search for the best driver...** and click **Next**.
7. Follow the on-screen instruction to proceed.
8. Click **Next** to continue.

9. The installation program will proceed automatically. Click **Finish** to complete the installation.

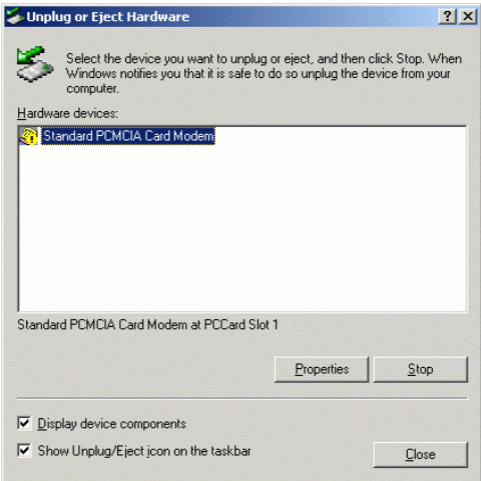
Installation for Windows 2000

If you want to use the Microsoft built-in driver, make sure to execute **d:\Driver\Win2000\PAR.exe**. Or perform the following procedures to update the latest driver.

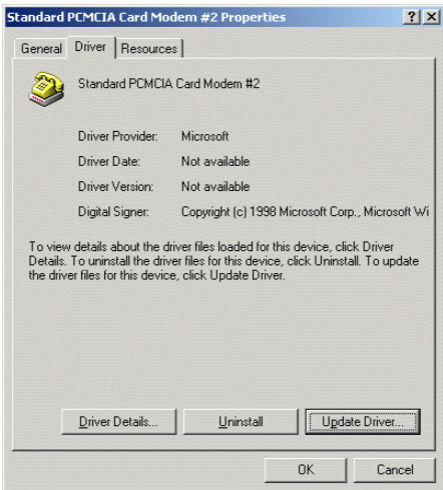
1. Once the PCMCIA Fax Modem 56K PC Card is plugged into your PCMCIA slot, Windows will prompt you a standard PCMCIA Card Modem has been installed and ask you if you want to restart your computer. Select **No**.
2. Double-click the small icon at the right bottom on your screen as illustrated below. If the icon does not appear at all, go to **My Computer** → **Control Panel** → **System** → **Hardware** → **device Manager**. Select **Modems** and skip to Step 4.



3. Click **Properties**.



4. Select the **Driver** tab. Click the **Update Driver...** button.

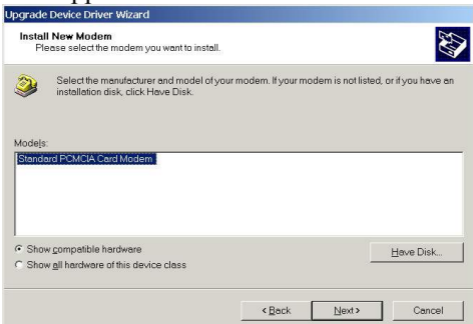


5. Click **Next** to continue.
6. Select **Display a list of the known drivers for this device so that I can choose a**

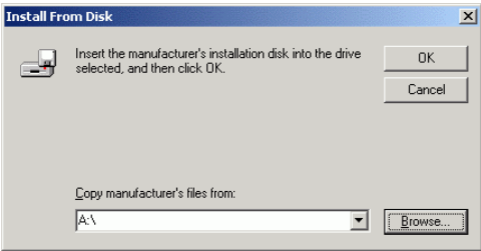
specific driver as illustrated below. And **click Next**.



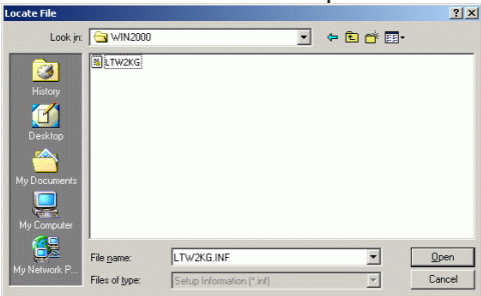
7. Click **Have Disk** when the following dialog box appears.



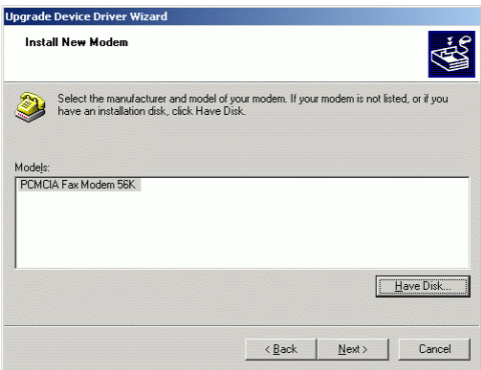
8. Load the CD that contains the device driver into your CD drive. Click **Browse** and direct the proper file location with the disk drive followed by **Driver\Win2000\LTW2KG**.



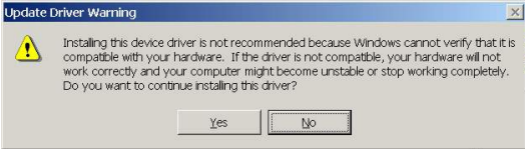
9. Select **LTW2KG**, and click **Open**. Follow the on-screen instructions to proceed.



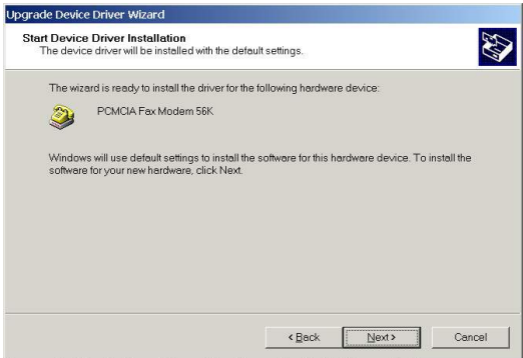
10. When the following figure appears, click **Next**.



11. When Windows prompt you an **Update Driver Warning** message. Select **Yes**.



12. Click **Next** to continue.



13. Click **Yes** to continue at the **Digital Signature Not Found** screen.



14. Click **finish** to complete the installation.

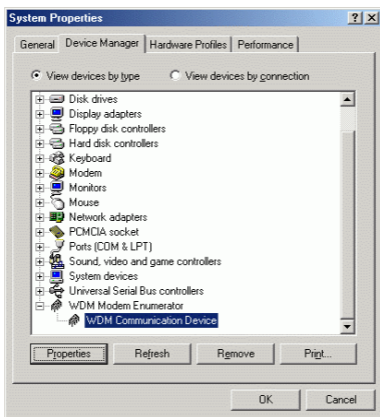


15. Remember to restart your computer to activate this new device.

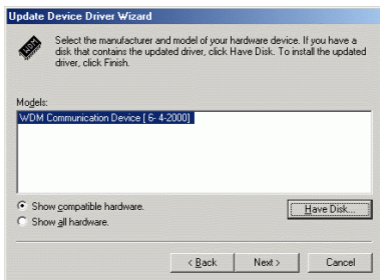
Installation for Windows Millennium

If you want to use the Microsoft built-in driver, make sure to execute **d:\Driver\WinME\PAR.exe**. Or perform the following procedures to update the latest driver.

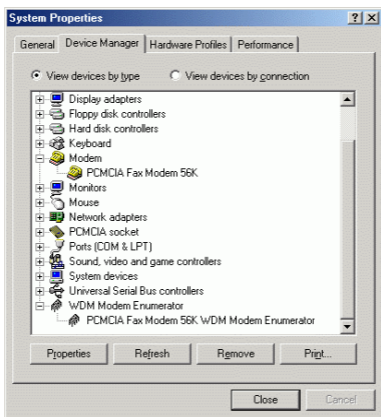
1. Once the PCMCIA Fax Modem 56K PC Card is plugged into the PCMCIA slot of your system, Windows will automatically detect the Lucent Win Modem.
2. To update WDM Communication Device driver, right-click **My Computer** → **Properties** → **Device Manager**.
3. Click **WDM Modem Enumerator** to expand.



4. Load the device driver into the CD-ROM drive of your system. Click **Properties**→**Driver**→**Update Driver**.
5. Select **Specify the location of the driver (Advanced)** and click **Next**.
6. Select **Display a list of all the drivers...**and click **Next**.
7. Click the **Have Disk...**button. Click **Browse** to select the CD-ROM drive where you put the device driver. (for example: D:\) Enter the CD-ROM driver letter followed by **Driver\WinME**.

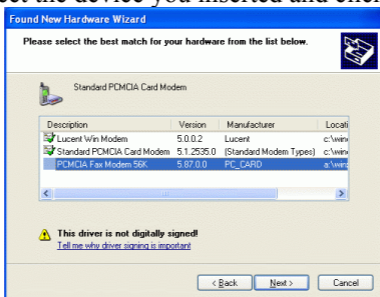


8. Click **Next**.
9. Click **Next** to proceed.
10. Click **OK** to finish the installation.
11. Go back to step 2. Click **Modem** to expand.
12. Load the device driver into the CD-ROM drive of your system. Click **Properties** → **Driver** → **Update Driver**.
13. Select **Specify the location of the driver (Advanced)** and click **Next**.
14. Select **Display a list of all the drivers...** and click **Next**.
15. Click the **Have Disk...** button. Click **Browse** to select the CD-ROM drive where you put the device driver. (for example: D:\) Enter the CD-ROM driver letter followed by **Driver\WinME**.
16. Click **Next**.
17. Click **Next** to proceed.
18. Click **Finish** to complete the installation.
19. To verify if the PCMCIA Fax Modem 56K exists in your system, go to **Device Manager**. **PCMCIA Fax Modem 56K** and **PCMCIA Fax Modem 56K WDM Modem Enumerator** should be found. If not, contact your dealer for technical support.



Installation for Windows XP

1. Once the device is well inserted into your PCMCIA slot, windows will prompt you the following message. Insert the device driver CD (or diskette). Select **install the hardware automatically ...** and click **next**.
2. Select the device you inserted and click **next**.



3. Click **Continue Anyway**. Then windows will start to copy the appropriate driver into your system.
4. Click **finish** to complete the software installation.

5. To verify if the device exists in your system, go to **Start → Control Panel → System → Hardware → Device Manager**. Check if the device is listed. If not, contact your dealer for technical support.

Installation for Windows NT

1. Before you start Windows NT, make sure the PCMCIA Fax Modem 56K PC Card has been properly inserted into the free PCMCIA slot of your computer.
2. Load the device driver compact disk in the CD-ROM drive.
3. Start Windows NT.
4. Go to **My Computer**.
5. Click the CD-ROM drive. Click the **driver\winnt** folder. Or you may click the **Browse** button to select the CD-ROM drive and the **driver\winnt** folder.
6. Double-click **setup.exe**. The installation program will proceed automatically.

Note: If Softex or Card Wizard was already installed in your system, Windows will appear message for PC Card malfunctioning. Ignore this message and install the WinNT driver. Remember to reboot after the installation.

Free Manuals Download Website

<http://myh66.com>

<http://usermanuals.us>

<http://www.somanuals.com>

<http://www.4manuals.cc>

<http://www.manual-lib.com>

<http://www.404manual.com>

<http://www.luxmanual.com>

<http://aubethermostatmanual.com>

Golf course search by state

<http://golfingnear.com>

Email search by domain

<http://emailbydomain.com>

Auto manuals search

<http://auto.somanuals.com>

TV manuals search

<http://tv.somanuals.com>