

**vtech**<sup>®</sup>

User's Manual

# Sit-to-Race Smart Wheels<sup>™</sup>



© 2012 VTech  
Printed in China

Download from [www.Somanuals.com](http://www.Somanuals.com). All Manuals Search And Download US

*Dear Parent,*

*Ever notice the look on your baby's face when they learn something new through their own discovery? These self-accomplished moments are a parent's greatest reward. To help fulfill them, VTech® created the **Infant Learning**® series of toys.*

*These unique interactive learning toys directly respond to what children do naturally – play! Using innovative technology, these toys react to baby's interactions, making each play experience fun and unique as they learn age-appropriate concepts like first words, numbers, shapes, colors and music. More importantly, VTech®'s **Infant Learning**® toys develop baby's mental and physical abilities by inspiring, engaging and teaching.*

*At VTech®, we know that a child has the ability to do great things. That's why all of our electronic learning products are uniquely designed to develop a child's mind and allow them to learn to the best of their ability. We thank you for trusting VTech® with the important job of helping your child learn and grow!*

*Sincerely,*

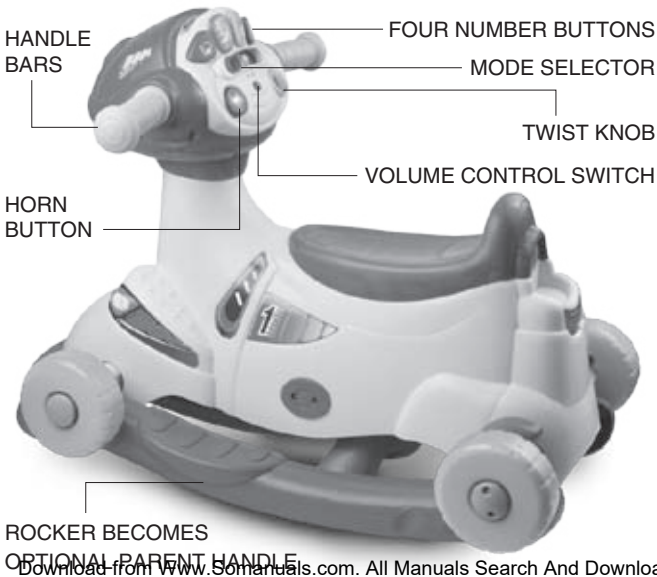
*Your friends at VTech®*

*To learn more about the **Infant Learning**® series and other VTech® toys, visit [www.vtechkids.com](http://www.vtechkids.com)*

# INTRODUCTION

Thank you for purchasing the **VTech® Sit-to-Race Smart Wheels™** learning toy!

Rock, ride and learn with the **Sit-to-Race Smart Wheels™** by **VTech®**! This ride-on toy grows with your child and helps them learn numbers, gross motor skills, pretend play, and more! For the younger child, the dashboard activity panel can be played with on the floor and features a horn button, twisting knob, two handle bars, and four number buttons. As your child grows, they can sit on the bike, which can be used as a rocker or as a ride-on that can be pushed by parents.



# INCLUDED IN THIS PACKAGE

- One electronic dashboard activity panel
- Two handle bars



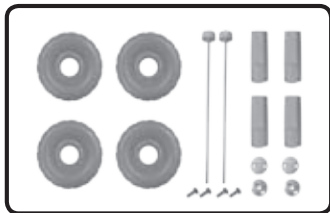
- One body



- Rocker/parent handle pieces



- Four wheels, two axles, four cylinders, fasteners and spindles



- One user's manual

Download from [www.Somanuals.com](http://www.Somanuals.com). All Manuals Search And Download.

## WARNING:

All packing materials, such as tape, plastic sheets, packaging locks and tags are not part of this toy, and should be discarded for your child's safety.

## ATTENTION

Pour la sécurité de votre enfant, débarrassez-vous de tous les produits d'emballage tels que rubans adhésifs, feuilles de plastique, attaches et étiquettes. Ils ne font pas partie du jouet.

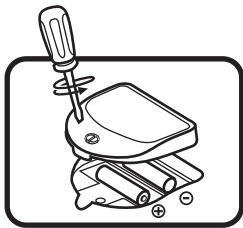
## NOTE:

Please keep this instruction manual as it contains important information.

# INSTRUCTIONS

## BATTERY INSTALLATION

1. Make sure the unit is turned **OFF**.
2. Locate the battery cover on the bottom of the dashboard activity panel. Use a screwdriver to loosen the screw.
3. Install 2 new 'AA' (AM-3/LR6) batteries following the diagram inside the battery box. (The use of new alkaline batteries is recommended for maximum performance.)
4. Replace the battery cover and tighten the screw to secure.



## BATTERY NOTICE

- Use new alkaline batteries for maximum performance.
- Use only batteries of the same or equivalent type as recommended.
- Do not load from more than 5 types of batteries. As Makin's Standard (Crown

zinc) or rechargeable (Ni-Cd, Ni-MH), or new and used batteries.

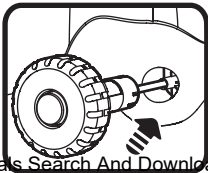
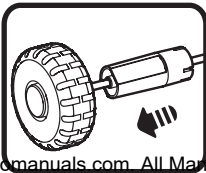
- Do not use damaged batteries.
- Insert batteries with the correct polarity.
- Do not short-circuit the battery terminals.
- Remove exhausted batteries from the toy.
- Remove batteries during long periods of non-use.
- Do not dispose of batteries in fire.
- Do not charge non-rechargeable batteries.
- Remove rechargeable batteries from the toy before charging (if removable).
- Rechargeable batteries are only to be charged under adult supervision.

## PRODUCT ASSEMBLY

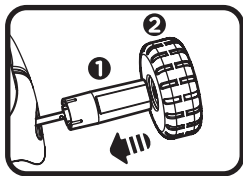
**⚠ CAUTION:** With the **VTech® Sit-to-Race Smart Wheels™**, safety comes first. To ensure your child's safety, please only assemble this product by an adult. This package contains four small screws. For your child's safety, do not let your child play with the toy until it is fully assembled. Adult supervision required.

### ASSEMBLY INSTRUCTIONS

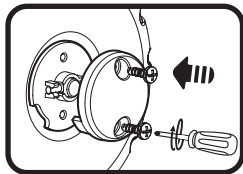
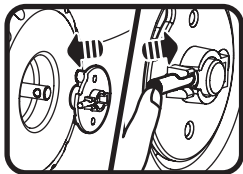
1. To install the four wheels onto the body, first insert an axle through one wheel and one yellow cylinder. Please be sure the deeper hole in the wheel faces out, and the larger end of the yellow cylinder goes inside the body. Maneuver the cylinder until it locks into place.



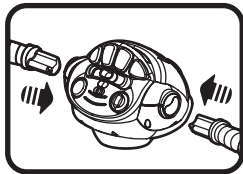
Insert another yellow cylinder and one wheel onto the open end of the axle. Please be sure the deeper hole in the wheel faces out, and the larger end of the yellow cylinder goes inside the body. Maneuver the cylinder until it locks into place.



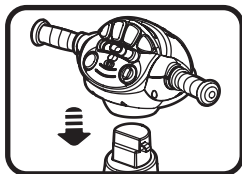
Cover with a fastener, with the spindle side up and aligned with the hole in the axle, then insert the spindle through the hole in the axle. Put a cover over the fastener, aligning the holes in the cover with the holes in the fastener. Insert two screws into the cover and tighten with a screwdriver. Repeat this process for the second wheel.



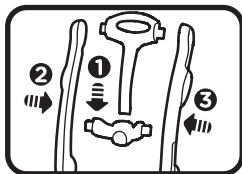
2. To attach the left and right handle bars to the dashboard activity panel, insert them into the holes on the sides. You will hear a loud 'click' sound. This indicates that the handle bars are securely fixed into the dashboard activity panel.



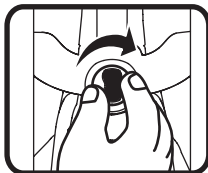
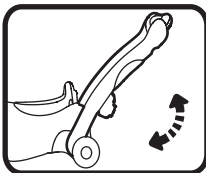
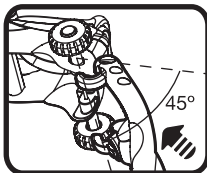
3. Attach the dashboard activity panel to the body by snapping the dashboard activity panel onto the body. You will hear it click into place. Please ensure the dashboard activity panel is attached securely to the body.



4. To assemble the parent handle, first insert the handle grip into the middle support. Attach each side piece by pushing down the locks on the side piece and inserting the male parts of the handle grip and middle support into the corresponding female parts of the side piece. You will hear the side pieces click into place.



5. Place the bottom of the parent handle onto the back axle at a 45-degree angle, then rotate the handle up to connect to the rear of the seat. Lock the parent handle in place by tightening the large screw.





## WARNING!

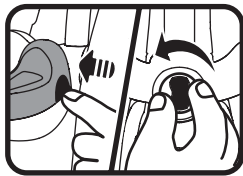
- Not to be used by children over 36 months due to insufficient strength. 42 pounds max.

## ATTENTION !

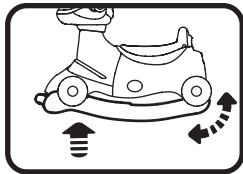
- This toy should be operated in a safe area.
- Please ensure young children are supervised by an adult.  
Please ensure your child is positioned correctly on the seat when in ride-on or rocker mode.
- This toy should be used with caution to avoid falls or collisions that cause injury to your child or others.

# CONVERTING THE SIT-TO-RACE SMART WHEELS™

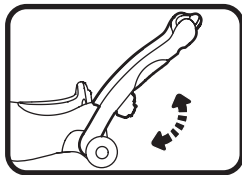
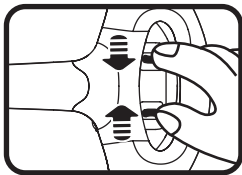
1. To convert to rocker mode, press and hold the green button on the side of the seat, loosen the large screw on the handle, then rotate the handle to a horizontal position under the body.



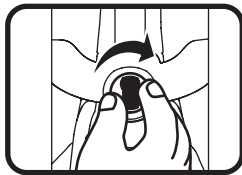
Push the handle into the two locks under the front wheels. You will hear a click to indicate the parent handle is secure and can be used as rocker blades.



2. To convert to ride-on mode, squeeze the two locks under the front wheels to disconnect the handle. Rotate the handle to a vertical position behind the body.

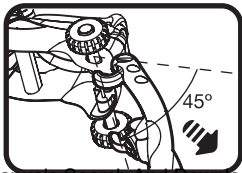
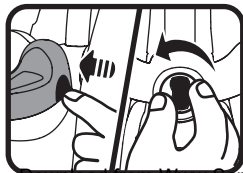


Secure the handle by tightening the large screw.

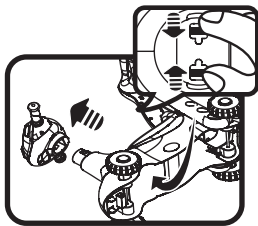


**PLEASE NOTE:**

- **The handle is designed for parental use only. This product should not be used by a child as a push toy.**
3. To remove the handle in ride-on mode, press and hold the green button on the seat and unscrew the large screw. Then, move the handle to a 45-degree angle and remove it from the axle.



4. To remove the dashboard activity panel from the body, turn over the body and squeeze the green locks inside, under the activity panel. Remove the dashboard activity panel from the body.



To avoid injury caused by the lock on the neck of the body, please keep the body out of your child's reach when playing with the dashboard activity panel by itself on the floor.



## PRODUCT FEATURES

### 1. MODE SELECTOR

To turn the unit **ON**, slide the **MODE SELECTOR** to the **LEARNING MODE** (📖) or the **DISCOVERY MODE** (♀) position. To turn the unit **OFF**, slide the **MODE SELECTOR** to the **OFF** (OFF) position.



## 2. VOLUME CONTROL SWITCH

To adjust the volume, slide the **VOLUME CONTROL SWITCH** on the dashboard activity panel to the **LOW VOLUME** (🔊) or the **HIGH VOLUME** (🔊) position.

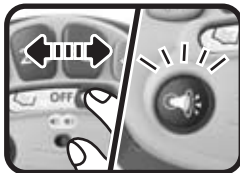


## 3. AUTOMATIC SHUT-OFF

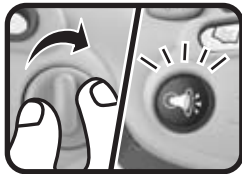
To preserve battery life, the **VTech® Sit-to-Race Smart Wheels™** will automatically power-down after approximately 45 seconds without input. The unit can be turned on again by pressing any button.

## ACTIVITIES

1. Slide the **mode selector** to the **learning mode** or **discovery mode** position to turn the unit on. You will hear a song, a playful phrase and the horn sound. The light will flash with the sounds.
2. Press the **horn button** to hear fun horn sounds. The light will flash with the sounds.



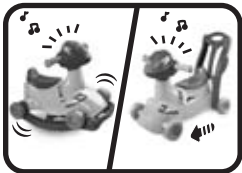
3. Twist the **twist knob** to hear fun engine sounds. The light will flash with the sounds.



4. Press the **four number buttons** to learn numbers, objects and places, You'll also hear sounds and an encouraging phrase. The light will flash with the sounds.



5. Rock and ride the bike to hear fun sounds and melodies. The light will flash with the sounds.



6. If there is no input to the unit after approximately 8 seconds, you will hear a question, which will encourage you to find the correct object. After another 8 seconds if there is still no input, you will hear a fun sung song or an encouraging phrase. After another 8 seconds if there is still no input, you will hear a short tune, then the unit will automatically power-down.

## **MELODY LIST:**

1. I've Been Working on the Railroad
2. The Glow Worm
3. Three Blind Mice
4. The Wheels on the Bus
5. Oh, Where, Oh, Where Has My Little Dog Gone?
6. Twinkle, Twinkle, Little Star
7. Three Little Kittens
8. Polly Wolly Doodle
9. This Old Man
10. Jack & Jill
11. Here We Go 'Round the Mulberry Bush
12. London Bridge
13. Skip to My Lou
14. Hey Diddle Diddle
15. It's Raining, It's Pouring
16. Pease Porridge Hot

## **SING-ALONG SONGS**

### **Song 1**

We're on our way,

Riding all around town.

1-2-3-4,

Wheels go round and round!

## Song 2

It's time to ride.

Let's ride and play.

Where would you like to ride today?

Ride to the park?

Ride to the zoo?

Ride to the places we like to go to!

## CARE & MAINTENANCE

1. Keep the unit clean by wiping it with a slightly damp cloth.
2. Keep the unit out of direct sunlight and away from any direct heat source.
3. Remove the batteries when the unit is not in use for an extended period of time.
4. Do not drop the unit on a hard surface and do not expose the unit to moisture or water.

# TROUBLESHOOTING

If for some reason the program/activity stops working or malfunctions, please follow these steps:

1. Turn the unit **OFF**.
2. Interrupt the power supply by removing the batteries.
3. Let the unit stand for a few minutes, then replace the batteries.
4. Turn the unit **ON**. The unit should now be ready to play again.
5. If the product still does not work, replace with an entire set of new batteries.

If the problem persists, please call our Consumer Services Department at 1-800-521-2010 in the U.S. or 1-877-352-8697 in Canada, and a service representative will be happy to help you.

## **IMPORTANT NOTE:**

Creating and developing **Infant Learning** products is accompanied by a responsibility that we at **VTech**® take very seriously. We make every effort to ensure the accuracy of the information which forms the value of our products. However, errors sometimes can occur. It is important for you to know that we stand behind our products and encourage you to call our Consumer Services Department at 1-800-521-2010 in the U.S., or 1-877-352-8697 in Canada with any problems and/or suggestions that you might have. A service representative will be happy to help you.

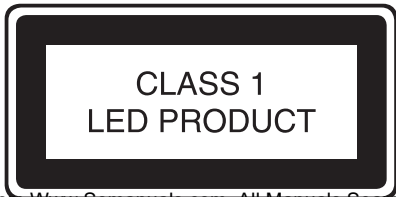


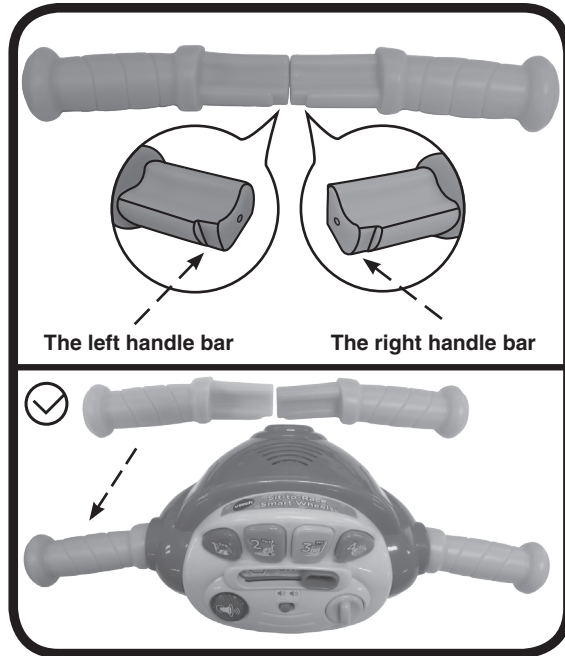
## NOTE:

This equipment has been tested and found to comply with the limits for a Class B digital device, pursuant to Part 15 of the FCC Rules. These limits are designed to provide reasonable protection against harmful interference in a residential installation. This equipment generates and uses radio frequency energy and if not installed and used in accordance with the manufacturer's instructions, may cause interference to radio communications. However, there is no guarantee that interference will not occur in a particular installation. If this equipment does cause interference with radio or television reception, which can be determined by turning the equipment on and off, the user is encouraged to try to correct the interference by one or more of the following measures:

- Reorient the receiving antenna.
- Increase the separation between the equipment and receiver.
- Connect the equipment into an outlet on a circuit different from that to which the receiver is connected.
- Consult the dealer or an experienced radio/TV technician for help.

**Caution:** changes or modifications not expressly approved by the party responsible for compliance could void the user's authority to operate the equipment.





**PLEASE NOTE:**

- Please assemble the product according to the above image.
- Please be sure the handle bars are correctly attached to the dashboard activity panel. The handle bars should not be removable once attached.

91-002804-000 (US)

80-138600-001-001 HANDLE BAR SHEET  
P/N: 91-002804-000  
COLOR: B/W  
SIZE: 101X127MM

## Free Manuals Download Website

<http://myh66.com>

<http://usermanuals.us>

<http://www.somanuals.com>

<http://www.4manuals.cc>

<http://www.manual-lib.com>

<http://www.404manual.com>

<http://www.luxmanual.com>

<http://aubethermostatmanual.com>

Golf course search by state

<http://golfingnear.com>

Email search by domain

<http://emailbydomain.com>

Auto manuals search

<http://auto.somanuals.com>

TV manuals search

<http://tv.somanuals.com>