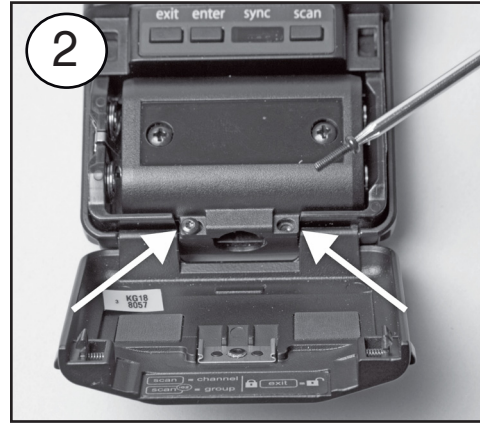
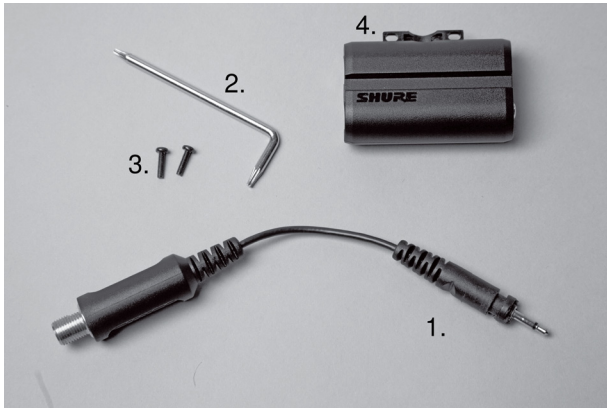


SBC-DC

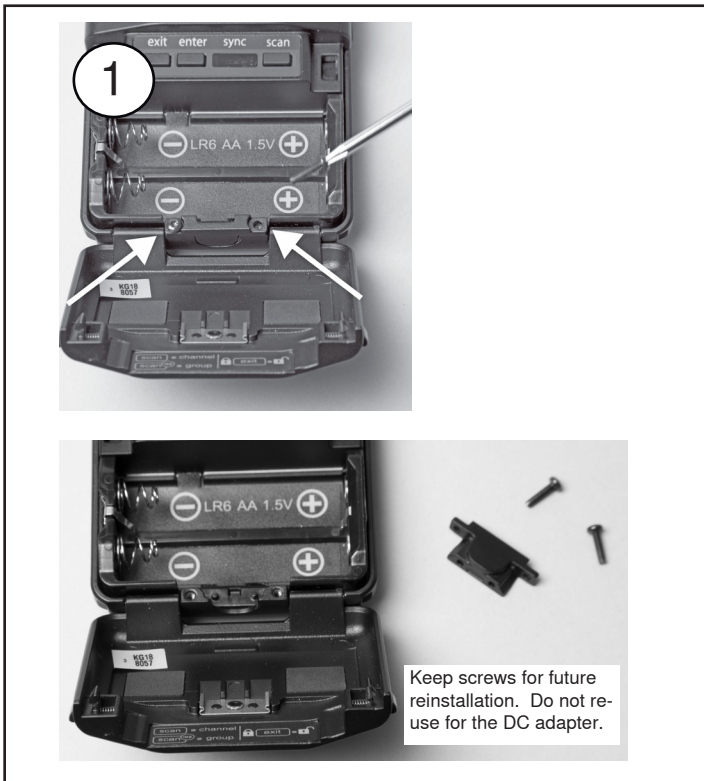
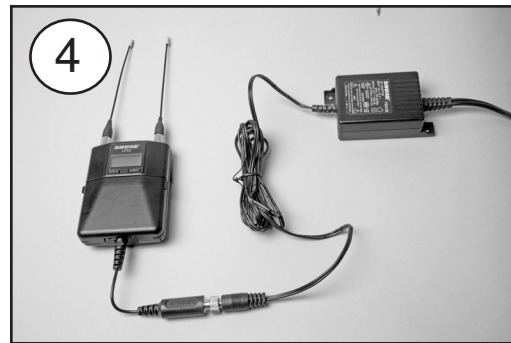
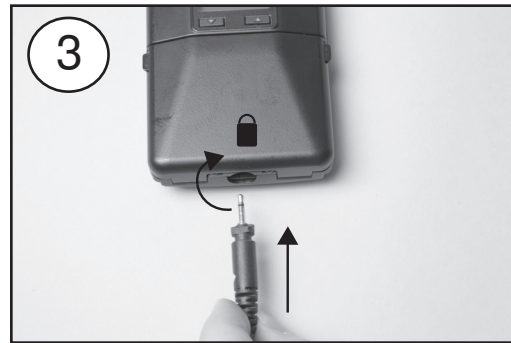
The SBC-DC takes the place of a battery, allowing you to connect a PS41 AC adaptor to the following Shure bodypack receivers:

- UR5
- P10R
- P9RA

1. Cable Adapter (95A16797)
2. T6 L-wrench (95A20192)
3. T6 Adapter Screw (30A20412)
4. DC Adapter (90A16794)



IMPORTANT: Only use screws included with the adapter.



SBC-DC

Input	8 to 20 V DC
Output	3V DC
Operating Temperature	-18°C to 57°C (0°F to 135°F)

Free Manuals Download Website

<http://myh66.com>

<http://usermanuals.us>

<http://www.somanuals.com>

<http://www.4manuals.cc>

<http://www.manual-lib.com>

<http://www.404manual.com>

<http://www.luxmanual.com>

<http://aubethermostatmanual.com>

Golf course search by state

<http://golfingnear.com>

Email search by domain

<http://emailbydomain.com>

Auto manuals search

<http://auto.somanuals.com>

TV manuals search

<http://tv.somanuals.com>