

RCA

QuickStartGuide

EZ219BK, EZ219BL, EZ219CH, EZ219PL, EZ219RD, EZ219WH

RCA Small Wonder camcorder

www.rcaaudiovideo.com

Congratulations on purchasing your new RCA High Definition Small Wonder Camcorder.

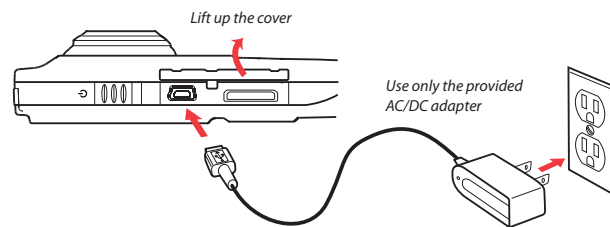
Please read these instructions for quick tips on using the product.

1. Content of the box

- Small Wonder Camcorder
- AC/DC adapter
- USB cable
- AV cable
- 4 GB microSD card
- microSD to SD adaptor
- Software DVD
- Carrying case
- Wrist strap
- Quick Start Guide
- Owner Registration card
- Warranty leaflet

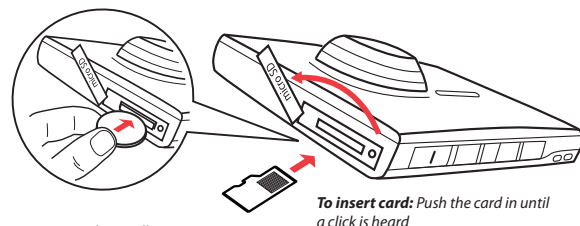
2. Charging your camcorder

Please charge the battery for at least 3 hours before first use. Charging is faster when the camcorder is switched off.



3. Inserting (or removing) memory card

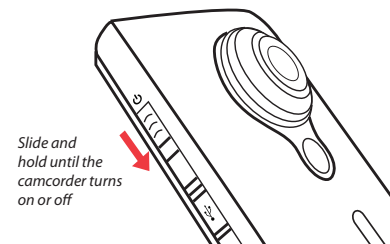
The camcorder internal memory will only permit minutes of recording time. A microSD memory card (supplied) is recommended for recording.



As the memory card is small in size, it is recommended to use a **small coin** to help insert or remove it.

To remove card: Push card in until a click is heard, then slowly release the card. As card is under minimal tension when locked in memory slot, please use care when removing.

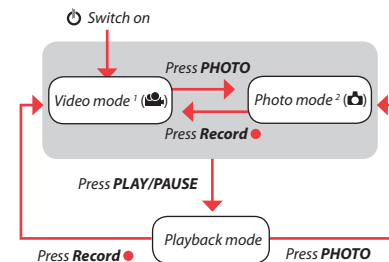
4. Turning on the camcorder



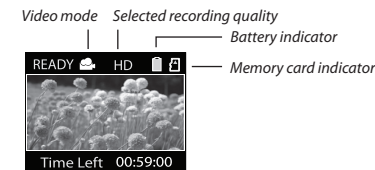
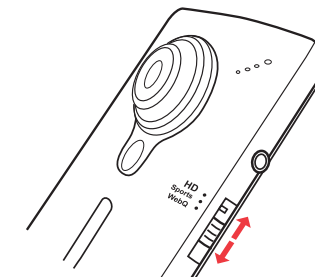
¹ In Video mode (📹), press **Record** (●) to record a video.

² In Photo mode (📷), press **PHOTO** to take a photo.

The camcorder has three operation modes (Video, Photo and Playback). It is always in Video mode after switched on. Refer to the diagram below for switching between modes.



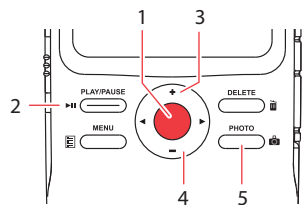
5. Selecting recording quality



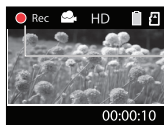
Settings	Resolutions (pixel) & Frame Rates (FPS)	Approx. recording durations on a 16 GB memory card ³
HD	1280 x 720 @ 30fps	8 hours
Sports	848 x 480 @ 60fps	8 hours
WebQ	320 x 240 @ 30fps	40 hours

³ Actual recording time and capacity will vary depending on type of video content being recorded, system requirements, and other factors.

6. Video recording and photo taking

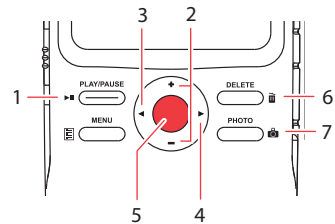


- 1 Start, stop, resume recording in Video mode (📹); enter Video mode (📹) from Photo mode (📷)
- 2 Pause recording
- 3 Zoom in during recording
- 4 Zoom out during recording
- 5 Enter Photo mode (📷) from Video mode (📹); take photos in Photo mode (📷)



Video recording indicator

7. Playing back or deleting recordings



- 1 Enter Playback mode to play the most recent recording; start or pause playback
- 2 Adjust volume during playback
- 3 Cue to previous recording
- 4 Cue to next recording
- 5 Enter Video mode (📹) from Playback mode
- 6 Press once to delete the last or selected recording; press and hold for 3 seconds to delete all recordings. Follow the instructions on screen to confirm deletion.
- 7 Enter Photo mode (📷) from Playback mode

8. Installing RCA Memory Manager application

Connect the camcorder to your PC with the provided USB cable. The Memory Manager application will start installation automatically⁴. Follow the instructions on screen for installation.

To ensure that videos can be managed and played on your PC:

- Make sure to install the included Memory Manager application.
- Use the SHARE functions of the Memory Manager for sharing videos with friends and family. The native files from the camcorder may not play in other computers.

9. Learning more about the camcorder

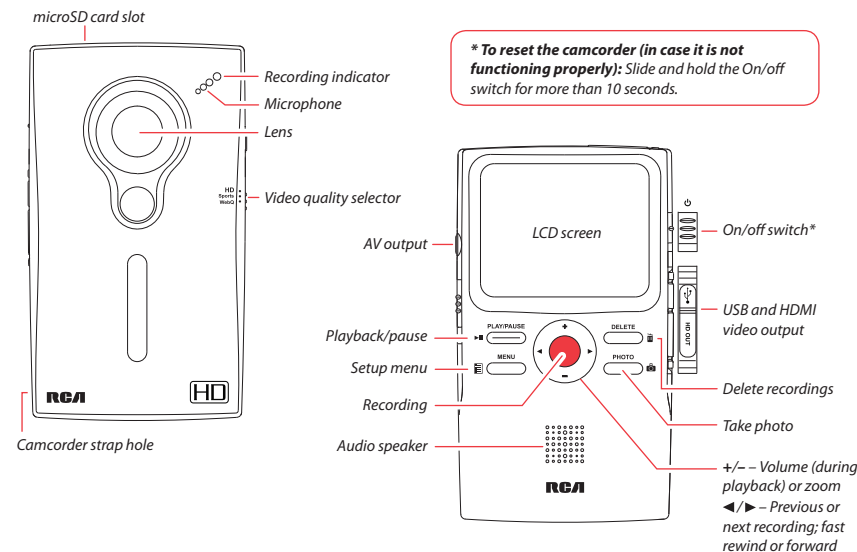
Read the user manual⁵ for more information on the following:

- Using the **MENU** button to set the camcorder (including date and time)
- Viewing videos on TV
- Recording videos to VHS tape or DVD
- Connecting the camcorder to your PC
- Tips and troubleshooting
- Safety and warranty information

⁴ If the installation does not start automatically, open My Computer and double-click the SmallWonder icon. Then double-click **rcasw_setup** to start the installation.

⁵ The user manual (PDF file) is stored at the root level of the camcorder. To access the file, connect the camcorder with your computer and open the drive letter associated with the camcorder. The user manual can also be downloaded from www.rcaaudiovideo.com.

General controls



*** To reset the camcorder (in case it is not functioning properly):** Slide and hold the On/off switch for more than 10 seconds.

For customer service and technical support

Please visit: www.rcaaudiovideo.com

Free Manuals Download Website

<http://myh66.com>

<http://usermanuals.us>

<http://www.somanuals.com>

<http://www.4manuals.cc>

<http://www.manual-lib.com>

<http://www.404manual.com>

<http://www.luxmanual.com>

<http://aubethermostatmanual.com>

Golf course search by state

<http://golfingnear.com>

Email search by domain

<http://emailbydomain.com>

Auto manuals search

<http://auto.somanuals.com>

TV manuals search

<http://tv.somanuals.com>