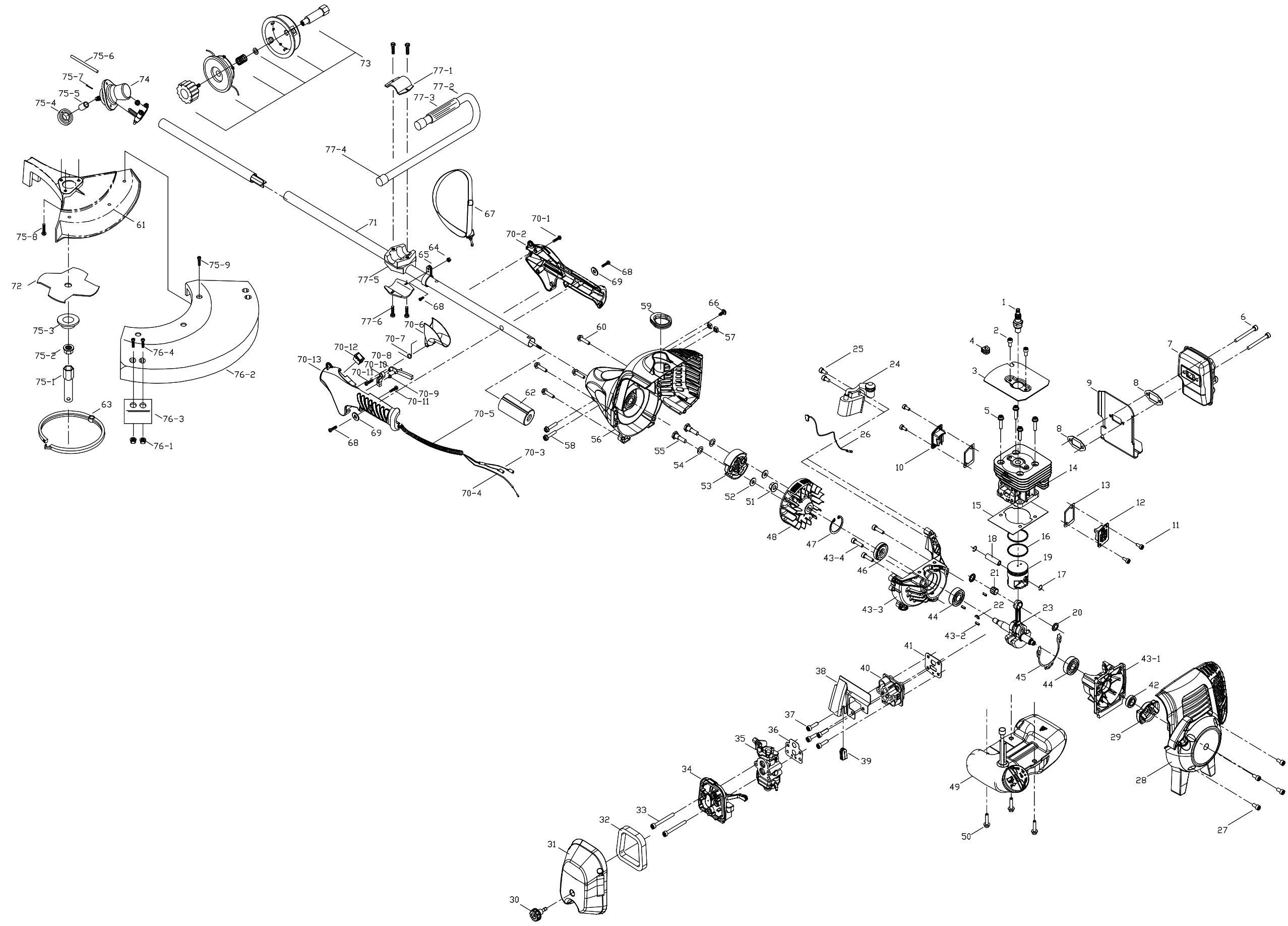


# SERVICE SPARE PARTS LIST

SPECIFY MODEL NO. WHEN ORDERING PARTS	
30cc Gas String Trimmer	
MODEL NO.	MT3090 / 41AD309G977

DATE	REVISIED DATE	PAGE
11/1/2004	N/A	1/2





## SERVICE SPARE PARTS LIST

<b>SPECIFY MODEL NO. WHEN ORDERING PARTS</b>		<b>DATE</b>	<b>REVISED DATE</b>	<b>PAGE</b>
<b>30cc Gas String Trimmer</b>		<b>11/1/2004</b>	<b>N/A</b>	<b>2/2</b>
<b>MODEL NO.</b>	<b>MT3090 / 41AD309G977</b>			

No.	STK CODE	JFT Parts No.	Description	Q	No.	STK CODE	JFT Parts No.	Description	Q	No.	STK CODE	JFT Parts No.	Description	Q
1		MC-9295-310501	SPARK PLUG	1	39		MC-9012-334501	GROMMET	1	70-3		MC-9010-332103	WIRE ASS'Y, SWITCH	1
2		MC-9SGEB-05-10	SCREW	2	40		MC-9072-334501	INSULATOR	1	70-4		MC-9010-334501	THROTTLE CABLE	1
3		MC-9211-334502	PLATE (SPARK SIDE)	1	41		MC-9014-334506	INSULATOR GASKET	1	70-5		MC-9059-332101	HOSE	1
4		MC-9012-330301	GROMMET	1	42		MC-9157-332101	SEAL	1	70-6		MC-9028-332101	TRIGGER	1
5		MC-9SRCB-05-22	SCREW	4	43		MC-9228-334501	CRANKCASE ASS'Y	1	70-7		MC-9024-332102	SPRING	1
6		MC-9SXMBJ05-50	SCREW	2	43-1		MC-9151-334502F	CRANKCASE (STARTER SIDE)	1	70-8		MC-9176-332101	LIBERATE SHAFT	1
7		MC-9228-334503	MUFFLE ASS'Y	1	43-2		MC-9PA-03-08	PIN	3	70-9		MC-9024-332103	SPRING	1
8		MC-9014-GP0102	MUFFLE GASKET	2	43-3		MC-9151-334501F	CRANKCASE (FLYWHEEL SIDE)	1	70-10		MC-9176-332102	LIBERATE CHUNK	1
9		MC-9211-334501	MUFFLE PLATE	1	43-4		MC-9SGEB-05-20	SCREW	3	70-11		MC-6SLABB3.5-10	SCREW	2
10		MC-9017-334501	COVER (FLYWHEEL SIDE)	1	44		MC-9DB-620101	BEARING	2	70-12		MC-9022-330502	SWITCH	1
11		MC-9SGEB-04-10	SCREW	4	45		MC-9014-334502	GASKET	1	70-13		MC-9068-332104	HOUSING, HANDLE	1
12		MC-9017-334502	GASKET	1	46		MC-9157-334501	SEAL	1	71		MC-9228-332617	HOUSING ASS'Y	1
13		MC-9014-334507	GASKET	2	47		MC-9CB-32	C RING	1	72		MC-9250-330601	BLADE, BRUSH 4-TOOTH	1
14		MC-9292-334501F	CYLINDER	1	48		MC-9169-334501	FLYWHEEL	1	73		MC-9228-330319	SRTINGHEAD ASS'Y	1
15		MC-9014-334501	GASKET	1	49		MC-9228-334506	FUEL TANK ASS'Y	1	74		MC-9110-330301	GEAR HOUSING ASS'Y	1
16		MC-9189-334501	PISTON RING	2	50		MC-9SKKBY05-18	SCREW	3	75		MC-9125-332603	ACCESSORIES	1
17		MC-9131-334501	CIRCLLP	2	51		MC-9NHC-08	NUT	1	75-1		MC-9042-330301	SLEEVE	1
18		MC-9115-334501	PISTON PIN	1	52		MC-9WFB-06-15	WASHER	2	75-2		MC-9NAZ-10	NUT	1
19		MC-9290-334501	PISTON	1	53		MC-9176-GP0101	CLUTCH (WITH SPRING)	1	75-3		MC-9111-330601	FLANGE, SPINDLE	1
20		MC-9067-334501	AXLS COVER	2	54		MC-9WWB-08	WAVE PLATE	2	75-4		MC-9131-330304	COLLAR	1
21		MC-9NR-KV9129.8	NEEDLE BEARING	1	55		MC-9214-GP0101	SCREW	2	75-5		MC-9124-330309	SPLINE SLEEVE	1
22		MC-6221-830301	KEY	1	56		MC-9228-334508	TRANSMISSION SUPPORT ASS'Y	1	75-6		MC-9111-330301	STICK	1
23		MC-9228-334502	CRANK/ROD ASS'Y	1	57		MC-9NDB-05	NUT	2	75-7		MC-9PB-1.4-20	PIN	1
24		MC-9288-334501-CH	IGNITION COIL	1	58		MC-9SDABM05-25	SCREW	2	75-8		MC-9SKKBY10/24-0.5	SCREW	3
25		MC-9SRCB-05-20	SCREW	2	59		MC-9012-334502	GROMMET	1	75-9		MC-9SKKB-06-15	SCREW	3
26		MC-9010-332102	COIL WIRE	1	60		MC-9SKKB-05-16	SCREW	4	76		MC-9228-330614	COVER ASS'Y	1
27		MC-9SGKB-05-12.5	SCREW	4	61		MC-9017-330301	SHIELD, BLADE	1	76-1		MC-6NGB-10/24	NUT	2
28		MC-9228-334504	STARTER HOUSING ASS'Y	1	62		MC-9027-332101	EDUTION	1	76-2		MC-9017-330310	COVER	1
29		MC-9228-MD0107	PAWLS ASS'Y	1	63		MC-9015-330601	GUARD, CUTTING BLADE	1	76-3		MC-9250-330301	KIT, KNIFE	1
30		MC-9134-334501	KNOB	1	64		MC-6NGB-05	NUT	1	76-4		MC-9SKKBY10/24-0.6	SCREW	2
31		MC-9017-334505	FILTER COVER	1	65		MC-9131-330305	HARNESS RING	1	77		MC-9228-330345	HANDLE ASS'Y	1
32		MC-9183-334501	FILTER	1	66		MC-9SGKBY10/24-0.625	SCREW	1	77-1		MC-9014-330401	CLAMP	2
33		MC-9SGEB-05-52	SCREW	2	67		MC-9149-330301-CH	HARNESS	1	77-2		MC-9068-330309	J HANDLE	1
34		MC-9228-334507	FILTER ASS'Y	1	68		MC-6SDAB-05-08	SCREW	3	77-3		MC-9068-330303	HANDLE	1
35		MC-9287-334501	CARBURETOR	1	69		MC-9WFB-5.64-12	WASHER	2	77-4		MC-9070-330301	PLUG	2
36		MC-9014-334505	CARBURETOR GASKET	1	70		MC-9228-334510	HANDLE ASS'Y	1	77-5		MC-9072-330401	CENTERPLECE	1
37		MC-9SKKB-05-19	SCREW	4	70-1		MC-6SDABB04-12	SCREW	4	77-6		MC-9125-330301	PARTS BAG	1
38		MC-9211-334503	PLATE	1	70-2		MC-9068-332103	HOUSING, HANDLE	1					

Stocking Codes are:  
 A - Dealer stocked                      B - Distributor stocked                      C - Factory stocked

## Free Manuals Download Website

<http://myh66.com>

<http://usermanuals.us>

<http://www.somanuals.com>

<http://www.4manuals.cc>

<http://www.manual-lib.com>

<http://www.404manual.com>

<http://www.luxmanual.com>

<http://aubethermostatmanual.com>

Golf course search by state

<http://golfingnear.com>

Email search by domain

<http://emailbydomain.com>

Auto manuals search

<http://auto.somanuals.com>

TV manuals search

<http://tv.somanuals.com>