

**KAJIDAN**

# KiWi™-L / Kiwi™+ User's Guide



## **Photographic VR Panoramic Tripod Head**

*Designed for the professional,  
priced for the novice...*

## Copyright Information

Copyright © 2001 Kaidan Incorporated. All Rights Reserved. First Edition, March 2001. Products mentioned herein may be trademarks of their respective companies. Patents Pending.

Information in this manual is subject to change without notice and does not represent a commitment on the part of Kaidan. No part of this manual may be reproduced or transmitted in any form or by any means, electronic or mechanical, including photocopying, recording, or information storage and retrieval systems, or translated to another language, for any purpose other than the licensee's personal use and as specifically allowed in the licensing agreement, without the express written permission of Kaidan.

## Kaidan Warranty and Return Policy

### A • Limited Warranty

In the event of a defect in materials or workmanship, Kaidan will repair the product with new or rebuilt parts for a period of three-hundred and sixty five (365) days from the date of original purchase. Such work will be performed free of charge. Follow the Product Return Procedure (Section D following).

Likewise, any software purchased from Kaidan also comes with a one year warranty if your disc or media is defective or damaged. This warranty is extended only to the original purchaser and is not transferable. A purchase receipt or other proof of original purchase will be required before warranty performance is rendered.

This warranty only covers failures due to defects in materials or workmanship which occur during normal use. It does not cover damages or failures which are caused from accident, misuse, abuse, neglect, mishandling, misapplication, alteration, faulty installation, modification, service by anyone other than an authorized representative of Kaidan, Acts of God, or by products not supplied by Kaidan.

This warranty covers any damage incurred during original shipment of product to customer. Any item resold, or distributed by, and not explicitly manufactured by Kaidan will be covered by their respective company's product warranty.

### B • Warranty Exclusions

There are no express warranties except as listed above.

Kaidan shall not be liable for special, incidental, consequential or punitive damages, including, without limitation, loss of goodwill, profits or revenue, loss of the use of this product or any associated equipment, cost of substitute equipment, downtime costs, or claims of any party dealing with buyer for such damages, resulting from use of this product or arising from breach of warranty or contract, negligence, or any other legal theory.

All express and implied warranties, including the warranties of merchantability and fitness for a particular purpose, are limited to the applicable warranty period set forth above. Some states do not allow the exclusion or limitation of consequential damages, or limitations on how long an implied warranty lasts, so the above exclusions or limitations may not apply to you.

This warranty and any claims which arise with the Kaidan product(s) are governed by the laws of the state of Pennsylvania. By purchasing this product, customer acknowledges and agrees to these Limits and Exclusions. If a problem with your Kaidan product develops during the warranty period, immediately contact Kaidan for assistance.

### C • Product Return Policy

All Kaidan products come with a 30-day return policy (a minimum 10 percent re-stocking fees will apply) from date of purchase, with the exception of software or videotapes.

Both of the aforementioned items are copyrighted and subject to the laws concerning intellectual property. Kaidan will replace defective software/videotapes free of charge upon return receipt of defective item(s). Products returned under this policy, excluding replacement of defective items, must be shipped at purchaser's expense. Purchaser must ship product with an approved traceable service, such as FedEx, and with appropriate levels of shipping insurance for the item being returned. Kaidan will not be held responsible for returned items lost or damaged in transit.

### Kaidan will issue a refund to customer's account if the following conditions are satisfied:

1) Receipt of item(s) in a restockable condition.

Criteria for Restockable Condition is as follows:

- All parts are included in box; hardware, manuals, discs, nuts/bolts, tools.
- No signs of damage; scratches, bent parts, missing pieces, markings, alterations, or additions to the product.
- All packaging materials are intact; foam, peanuts, cardboard, bubble bags.
- No signs of excess usage or wear to the product.

Items of Non-restockable condition are subject to the following:

- Restocking Fees - a minimum of 10 percent and possible additional fees based on the condition of the product (how the product best meets the criteria above), at Kaidan's discretion.

Non-Restockable Condition - constitutes the following:

- Missing parts; hardware, manuals, discs, nuts/bolts, tools, and packaging materials; foam, peanuts, cardboard, bubble bags.
- Signs of damage; scratches, bent parts, missing pieces, markings, alterations, additions to the product.
- Signs of excess usage or wear to the product.
- Damage or loss incurred during uninsured shipping to Kaidan. In this case, Kaidan cannot issue any type of refund. Customer will be responsible to submit claim with their shipping company.
- If damages occur in shipping, customer must submit claim with shipping company prior to any action by Kaidan.

Items Part of Special Bundle

If item(s) are part of a special bundle offer, return of part of the bundle will void any special pricing and the item(s) remaining in the possession of the customer will revert to their regular Suggested Retail Price (SRP). The credit, to customer, will reflect the difference of the actual product SRP from the amount of credit due customer.

Shipping Costs

All shipping costs, VAT, duties and return costs are sole responsibility of customer. If customer purchases thru Kaidan distributor or reseller, customer is responsible for all shipping and VAT costs incurred by that distributor or reseller. These charges are non-refundable.

For instructions on the return of your product, follow the Product Return Procedure below

### D • Product Return Procedure

When returning a product, customer must first contact Kaidan (or the distributor/reseller) and obtain a Return Material Authorization Number (RMA#). After receiving the RMA#, customer will be instructed to return product directly to Kaidan. Returned goods must be shipped with an approved traceable service, such as FedEx, and with appropriate levels of shipping insurance for the item being returned. Kaidan will not be held responsible for returned items lost or damaged in transit. RMA numbers are valid for 15 days, and the product(s) must be received by Kaidan before the RMA expires. We are unable to accept for return any product(s) received after the expiration of the RMA.

Return Packaging

The product packaging must reflect customer name, address, RMA# as well as Kaidan information:

Kaidan Incorporated  
703 East Pennsylvania Blvd • Feasterville, PA 19053 • U.S.A.

Attention: Return Department per RMA# \_\_\_\_\_

Contact Information: Voice: 215-364-1778 • Fax: 215-322-4186  
http://www.kaidan.com • E-mail: info@kaidan.com

# 1

## Assembling the KiWi™

### UNPACKING THE BOX

The KiWi-L or the KiWi + are shipped in a single box and consists of two major components. The components are detailed below. NOTE: Only the KiWi+ is shipped with four detent discs (12,14,18, and 20 positions). Please make sure that all parts are included. Examine the parts for any signs of shipping damage. In the event of shipping damage, immediately contact Kaidan to process claims.

If any items are missing or you notice any damage, call Kaidan at 215-364-1778, between the hours of 10:00 am and 6:00 PM, Mon-Fri, EST.



**KiWi +**

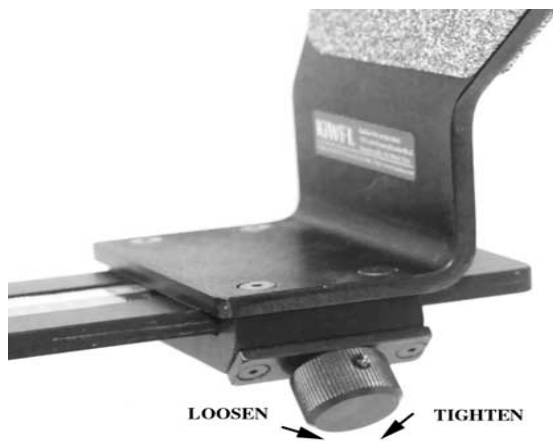


**KiWi-L**

# Assembling the KiWi™

## ATTACHING THE VERTICAL BRACKET

To assemble the KiWi, simply slide the Vertical Bracket onto the Horizontal Bracket in the orientation shown in the various images in this manual. Note: The bottom of the Vertical Bracket has a clamping mechanism with a spring-loaded nylon ball which keeps tension on the horizontal bracket while sliding the vertical bracket back and forth. Before installing the Vertical Bracket onto the Horizontal Bracket, make sure the Purple Clamping Knob is turned all the way out in a counterclockwise direction, which will release the clamping mechanism inside the bottom of the Vertical Bracket. When attaching the Vertical Bracket to the Horizontal Bracket, some force will be required initially to overcome the tension of the spring-loaded ball in the bottom of the Vertical Bracket.



**Slide Vertical Bracket  
onto Horizontal Bracket**

**Purple Clamping Knob**

# 2

## Using the KiWi™

### ATTACHING YOUR CAMERA

To mount your camera, first select the appropriate slot in the Vertical Bracket that will best locate the tripod mounting thread on your camera. You may need to reposition the Captive Camera Knob in order to achieve this. To remove the knob simply slide the knob along the slot to the end that has the threaded hole. Carefully unscrew the knob out of the threaded hole, being careful not to crossthread the knob. Replace the knob into the appropriate slot by reversing the procedure. Note: Whatever side of the Vertical Bracket you mount your camera on always keep the offset portion of the Vertical Bracket towards the rear of the camera. Attach your camera by threading the knob into the threaded tripod hole of your camera. Note: The camera knob is a two piece knob, (not shown), with a inner and outer knob. Before installing the camera knob in the Vertical Bracket, turn the inner knob clockwise into the outer knob until it won't turn anymore. Next install the knob into the appropriate slot then into the tripod mounting hole of your camera. Turn the inner knob into the camera until it bottoms out, then turn the outer knob clockwise until the camera is tight on the Vertical Bracket. Don't worry about getting the camera level at this time, as this is a task you'll need to do when you're ready to shoot. Note: If you have a large body camera that has very long distance from the tripod mounting surface to the center of the lens, the Vertical Bracket might have to be mounted on the Horizontal the reverse of how it is shown below with the camera facing in the other direction.

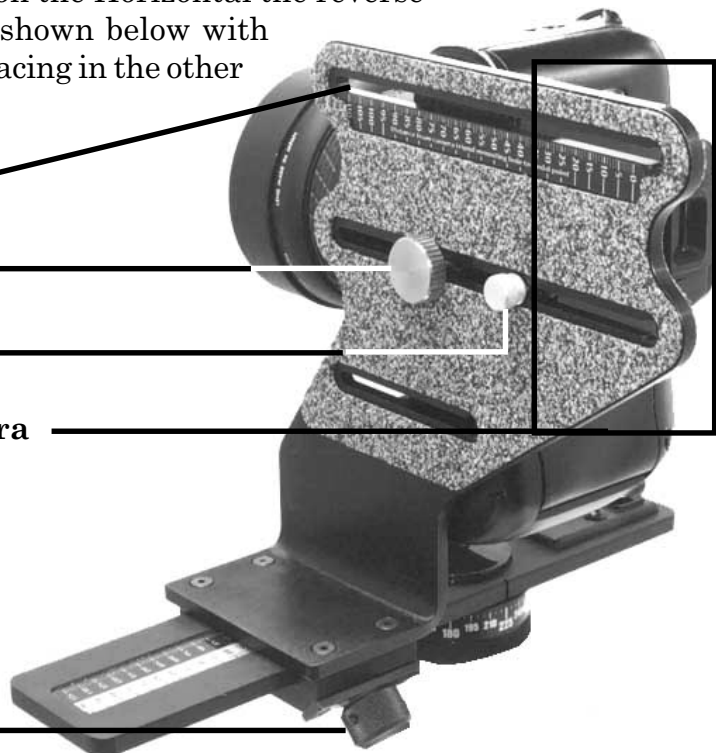
**Threaded Hole ( 1 of 3 )**

**Captive Camera Knob**

**Camera Shoe Adj. Knob**

**Offset towards rear of camera**

**Saddle Clamp Locking Knob**

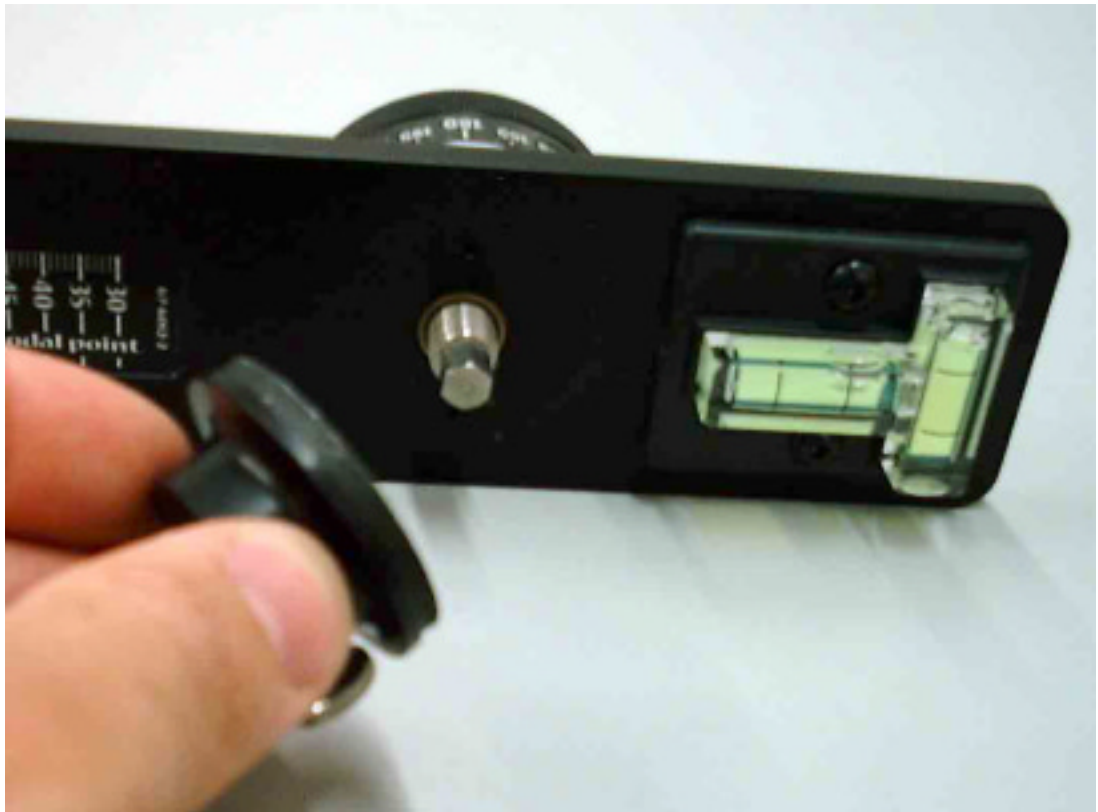


# Using the KiWi™

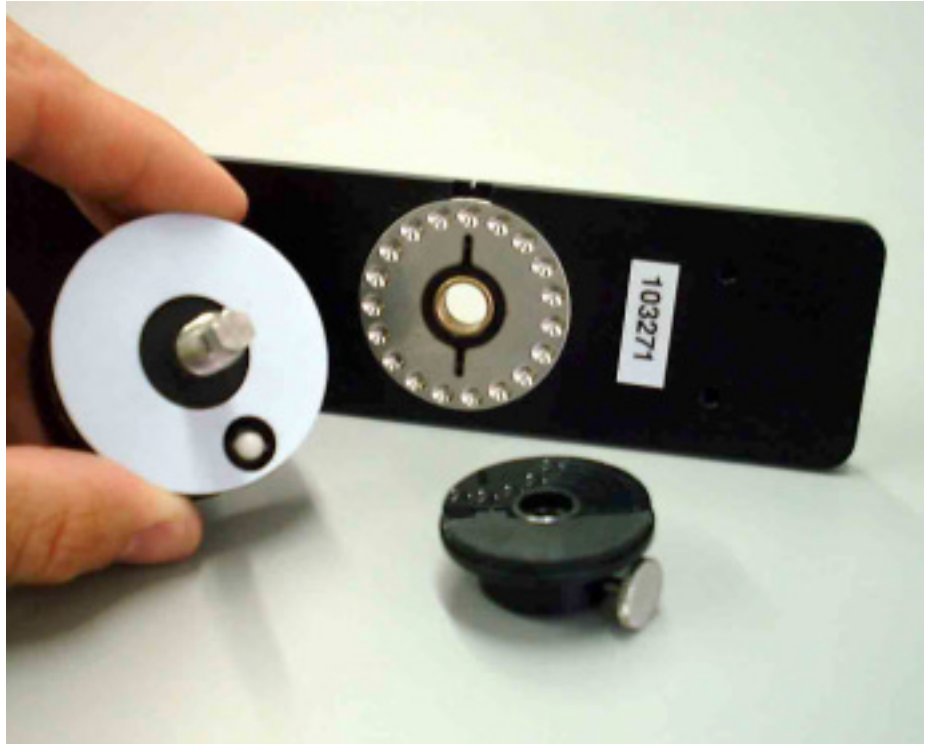
## REMOVING THE FRICTION CAP

The KiWi+ needs to be disassembled in order to install or change detent discs. The detent discs come in various settings and provide the different angular click-stops. (NOTE: See Disc Selection Chart In Appendix A).

To start, the friction cap must be removed. Loosen the knob located on the side of the friction cap. It does not have to be removed from the cap, but just backed out far enough so that the cap can be unscrewed from the axle. Unscrew the cap. Attached to the cap is a rubber washer with a nylon facing.



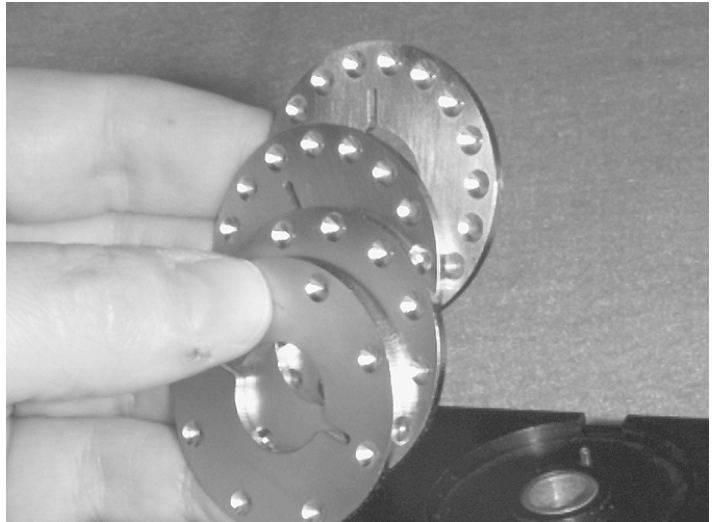
With the components removed from the top side of the horizontal bracket, the lower hub and axle assembly can be slid out and removed.



At this point, you'll be able to install the detent disc into the recessed area on the bottom.



With the disc removed, you can insert a different disc to change the angular detent spacing. Kaidan offers a variety of discs, with detents ranging from 2 to 22 per disk..



When changing discs, be sure the disc is seated properly and is flush with the top surface of the plate.

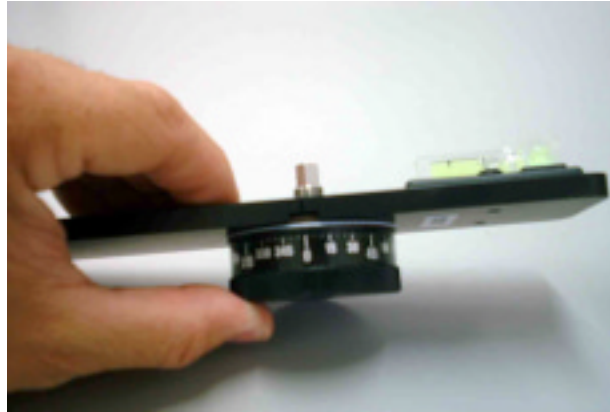


With the new disc inserted, you can begin to reassemble the assembly. Start by reinserting the axle and hub back into the bearing in the horizontal plate.





Push the axle through the bearing and plate as shown below.  
Reverse the disassembly.



Replace the cap by threading the cap onto the axle as shown below. Continue to thread the cap so that there is no free play in any of the pieces and to compress the rubber washer slightly.



When the friction drag feels adequate, turn the Friction cap so that the knob is aligned with one of the flats on the axle. Tighten the knob to lock.



The spring plunger that provides the detent action can also be adjusted to vary the force of the click action. Use a flat blade screw driver to move the plunger in and out as desired. A convenient way to adjust the plunger is to screw the plunger all the way in, until it bottoms out. Then unscrew the plunger about one turn.



## Removing the Detent Disc

Once the indexing hub is removed, the detent disc can be removed from its recess in the bottom of the horizontal bracket. The disc may slip out once the indexing hub is removed. If it sticks inside the recess, simply insert the tip of a small ball point pen or a pin into the detent disc ejection hole on top of the bracket and push the disc out of the detent disc recess.



# Using the KiWi™

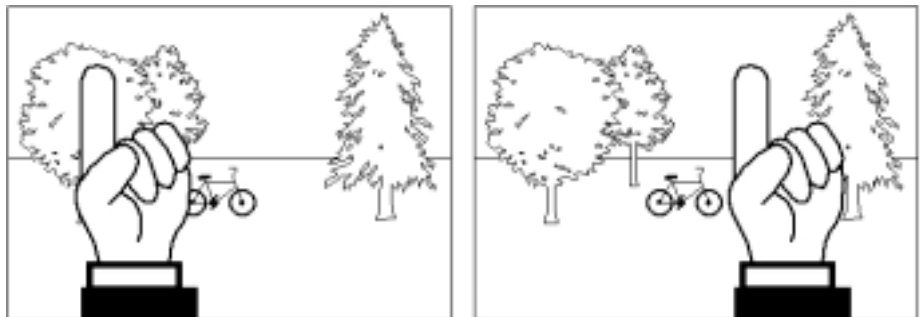
## HOW DO I LOCATE MY NODAL POINT ?

This is one of the most frequently asked questions when it comes to QTVR panorama creation. Once you understand the basics, you'll be able to easily locate the nodal point for any camera and lens combination.

Simply put, the nodal point is the point inside your camera where the light rays converge and flip over. When shooting a QTVR panorama It's necessary to rotate about this point to eliminate the image mismatch caused by parallax error.

It's also worth noting that the nodal point is not the same as the film plane, which is often marked on the underneath side of many 35mm cameras. Generally, for most 35mm cameras and lenses, the nodal point is located somewhere towards the center of the lens barrel.

Parallax error can be easily demonstrated by this simple experiment. Close one eye and hold your index finger upright about six inches away from your open eye. Rock your head from side to side. Notice how your finger moves with respect to the background. This relative movement is due to the fact that you're not rotating your head around your eye's nodal point, which is somewhere in the center of your eyeball. Instead, you're rotating about your spine which is several inches to the rear and off to one side. It is this relative side-to-side motion that we will strive to eliminate when setting up a camera for VR panoramas.

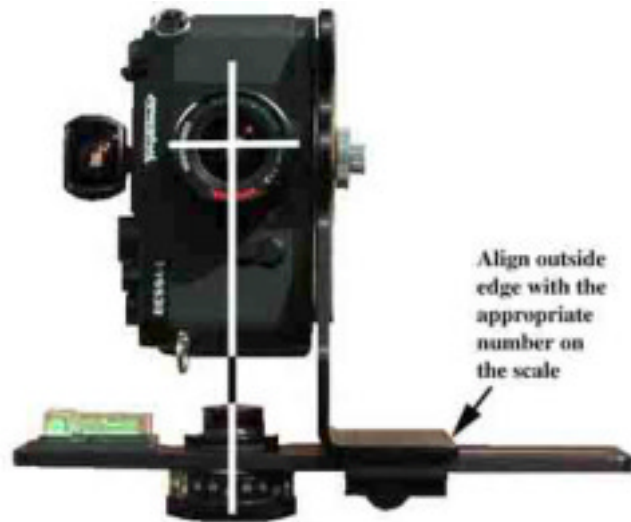


**STEP 1: THE  
EASY PART -  
THE SIDE-TO-  
SIDE**

**ADJUSTMENT**

Once your camera is fastened to your pan head, move around to the front of the unit so you're looking into the lens. The center of the lens should be directly over the

pivot axis of the pan head. Adjust the side-to-side adjustment so the lens is centered over the pivot.



With the KiWi™ you can also measure (in millimeters) the distance from the camera's mounting surface to the center of the lens. Then, slide the bracket until the outside edge of the bottom aligns with the appropriate number on the scale.

**Step 2: The Slightly Harder Part - Fore-Aft Adjustment**

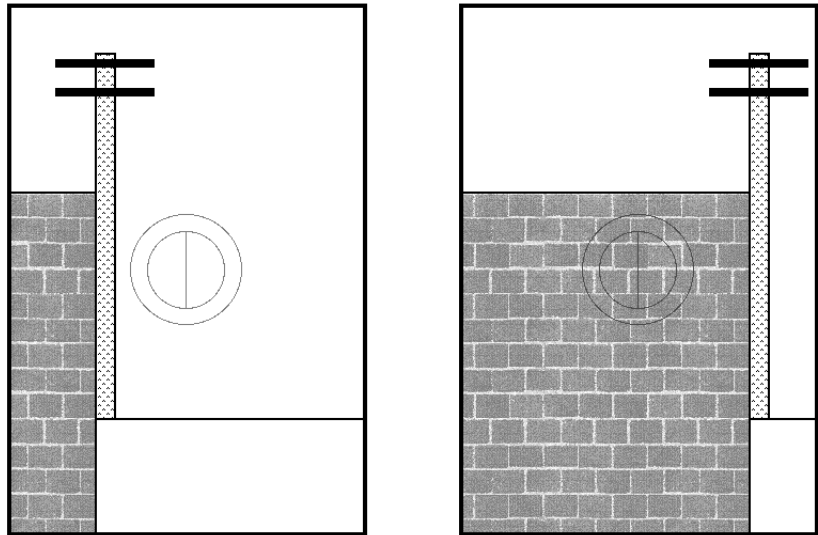
This step is most easily accomplished out of doors. Find a vertical edge or line, such as a doorway or edge of a building. Position your camera and tripod about 2-1/2 feet away, or as close as possible with the edge still in focus when you look through the viewfinder.

Looking through the camera's viewfinder, find another vertical edge or line that is far away, such as another building or telephone pole. Align the two objects and rotate the pan head so they are in the left hand side of the viewfinder.

Rotate the pan head so the two objects move over to the right hand side of the viewfinder. Unless you've managed to unwittingly locate the right position, you should notice the two objects will move with respect to each other as you rotate the pan from left to right. Slide the camera to the front or rear as required to eliminate this relative movement.

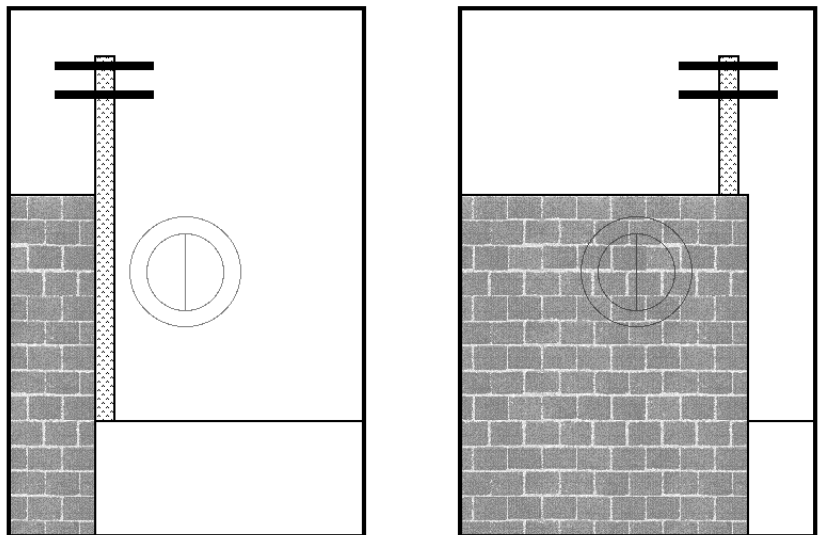
It may help to first locate the camera all the way to the front or rear and then move it a little bit at a time. This way you'll more readily see the parallax effect and notice how it im-

**Looking through the viewfinder align a close object (brick wall) with a faraway object (telephone pole). As you rotate the camera from side-to-side there should be no relative movement between the two objects as shown to the right.**



proves as you slide the bracket.

**If, as shown to the right, the two objects move with respect to one and another in the viewfinder, slide the camera fore or aft in order to eliminate this movement. Here, the telephone pole has moved behind the brick wall.**



### **STEP 3: LEVEL THE CAMERA**

Once you have located the fore-aft position, you now must level the camera. If your camera has a flash hot shoe, you can use a bubble level designed to slide into the shoe. You should be able to get these at a good photographic supply store. Kaidan also has these levels for sale at competitive prices.

If your camera does not have a hot shoe, then you'll need to level the camera another way. If the camera has a flat, level

surface, then you can use a bubble level. You should be able to locate a small level at a hardware store. If your there are no level surfaces, then you may have to resort to “eyeballing”.

#### **STEP 4: RECORD YOUR RESULTS**

After you’ve discovered the two location dimensions, be sure to record the settings. The KiWi has convenient indicator scales for this purpose. These numbers represent the nodal point for this given camera and lens combination. If you change cameras or lenses, this procedure may have to be repeated.

#### **STEP 5: HOW ABOUT RANGEFINDER CAMERAS?**

A rangefinder camera is a camera where you look through a separate viewfinder and not through the actual lens. The process is basically the same. Locate the Side-to-Side adjustment as discussed in Step 1. When it comes to the Fore-Aft adjustment, you won’t be able to look through the viewfinder to determine the proper setting since the viewfinder is a separate optical path that doesn’t really “see” the same image as the film.

Instead, you’ll have to start with the bracket all the way to the front and take pairs of test shots. Each pair will have the vertically aligned objects in the left and then the right side of the viewfinder. After each pair of photos, slide the bracket rearward and repeat the process. Slide the bracket the same increment each time (i.e. 10mm). Be sure to record the scale setting for each pair of images. Process the film, or in the case of digital cameras, download the images to your computer.

At the end of this process you will be able locate the pair of images with the least relative movement. If no single image is optimum, you may need to interpolate between two images to find the closest value.

# 3

## **TAKING PHOTOS WITH THE KIWI™**

### **HOW MUCH OVERLAP?**

The amount you turn the camera for each shot varies. It is dependent on a number of factors such as the field of view (the angle) of your camera and lens, as well as which program you intend to use. For example, Apple recommends that the images should overlap by anywhere from one-third to one-half. You should check with the recommendations of the software that you intend to use in order to determine overlap requirements.

### **HOW MANY SHOTS?**

Once you've determined the overlap, you'll be able to figure out how many shots. The easiest way to do this is to simply look through the viewfinder and turn the camera to achieve the desired amount of overlap. You then check the angle readout to see how far you turned the camera. Round the angular value to the nearest convenient value. For most stitching programs, it is generally not that important to use a precise overlap value.

However, it should be noted that some programs are more sensitive to an overlap value that constantly repeats from shot to shot. You may need to experiment somewhat to obtain the best results.

### **TAKING THE PHOTOS**

When you're ready to shoot, make sure that the camera and KiWi™ are securely attached. You should use a tripod that is sturdy, ideally one that has a center support system of braces to help keep the camera and KiWi™ from flexing.

Proper leveling is important. We discussed earlier, the process for leveling the camera in elevation (looking up and down on the Vertical Bracket), now that you're ready to shoot, it is important that the rotation plane of the camera is level as well.

## **TAKING THE PHOTOS (CONTINUED).**

You can use the level on your KiWi™ and observe it while you level the tripod. Of course, this task is much easier if your tripod also has a tilt head.

Once the tripod and KiWi™ are level, now is the time to double check to see if the camera is straight up and down. If it needs to be adjusted, loosen the Captive knob just a slight amount and tilt the camera accordingly. Be sure not to change the Fore-Aft dimension. Tighten the Captive knob.

If your using the KiWi-L rotate the camera so that the groove on the Horizontal Bracket aligns with the zero point on the circular barrel. Depending on whether the stitching software that you're using prefers the having the photos taken in a clockwise or counterclockwise sequence, you'll have to either count down from 360 degrees or count-up from zero degrees.

*NOTE: Starting with KiWi™-L units produced after July 1, 1997, we have added a bonus Label Sheet. This set contains self-adhesive labels with the popular degree increments. Since there are no other markings, the labels make it easy to rotate and stop at the correct position for your particular camera and lens combination. There is a "List of Lens FOV versus Number of Shots" chart and a "Degrees of Angle" chart in Appendix A.*

As you shoot around the circle, try to avoid capturing any moving objects that might come into your field of view. There is no harm in waiting, for example, while a person walks past before shooting the photo.

You may also want to check with the software developer of the stitching software that you're using to get their recommendations for exposure settings and other camera settings.

We hope you enjoy shooting your panoramas and if you have any questions or problems using our equipment, please let us know. We would also like to see the results of your work and would be glad to consider placing your work on our website, or to put a link to your website as well.

**Thank you,**  
The Kaidan team.



## Appendix A

### List of Lens FOV versus Number of Shots

Lens (35 mm equiv)	Disc for 50% overlap of images	Disc for 33% overlap of images	Disc for 25% overlap of images
14-15	12	10	8
18-20	14	12	10
22-24	16	14	12
27	18	16	14
35	20	18	16

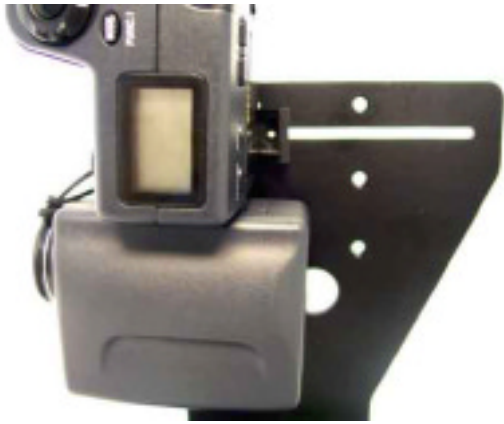
SHOTS

DEGREES OF ANGLE

8	0	45	90	135	180	225	270	315												
10	0	36	72	108	144	180	216	252	288	324										
12	0	30	60	60	120	150	180	210	240	270	300	330								
14	0	26	51	77	103	128	154	180	206	231	257	283	308	334						
16	0	22	45	67	90	112	135	157	180	202	225	247	270	292	315	337				
18	0	20	40	60	80	100	120	140	160	180	200	220	240	260	280	300	320	340		
20	0	18	36	54	72	90	108	126	144	162	180	198	216	234	252	270	288	306	324	342

## Camera Adjustment Lug Addendum

Because of the various sizes and camera body profiles, we have included a camera adjustment lug as an additional means of keeping your camera mounted in a vertical position. Shown below are examples of various ways to use the Camera Adjustment Lug to mount your camera.



## Free Manuals Download Website

<http://myh66.com>

<http://usermanuals.us>

<http://www.somanuals.com>

<http://www.4manuals.cc>

<http://www.manual-lib.com>

<http://www.404manual.com>

<http://www.luxmanual.com>

<http://aubethermostatmanual.com>

Golf course search by state

<http://golfingnear.com>

Email search by domain

<http://emailbydomain.com>

Auto manuals search

<http://auto.somanuals.com>

TV manuals search

<http://tv.somanuals.com>