

# Dell S2722QC Monitor

## User's Guide

**Model: S2722QC**  
**Regulatory model: S2722QCb**



 **NOTE: A NOTE indicates important information that helps you make better use of your computer.**

 **CAUTION: A CAUTION indicates potential damage to hardware or loss of data if instructions are not followed.**

 **WARNING: A WARNING indicates a potential for property damage, personal injury, or death.**

**Copyright © 2021 Dell Inc. or its subsidiaries. All rights reserved.** Dell, EMC, and other trademarks are trademarks of Dell Inc. or its subsidiaries. USB Type-C<sup>®</sup> and USB-C<sup>®</sup> are registered trademarks of USB Implementers Forum. Other trademarks may be trademarks of their respective owners.

2021 - 08

Rev. A00

# Contents

<b>Safety instructions</b> . . . . .	<b>6</b>
<b>About your monitor</b> . . . . .	<b>7</b>
Package contents . . . . .	7
Product features . . . . .	8
Identifying parts and controls . . . . .	9
Front view . . . . .	9
Side View . . . . .	10
Back view . . . . .	10
Bottom view . . . . .	11
<b>Resolution specifications</b> . . . . .	<b>15</b>
Supported video modes . . . . .	15
Preset display modes . . . . .	15
Electrical specifications . . . . .	17
Physical characteristics . . . . .	18
Environmental characteristics . . . . .	19
Pin assignments . . . . .	20
<b>Plug and play capability</b> . . . . .	<b>21</b>
<b>Universal Serial Bus (USB) interface</b> . . . . .	<b>21</b>
SuperSpeed USB 5 Gbps (USB3.2 Gen 1). . . . .	21
USB Type-C . . . . .	21
USB Type-C connector . . . . .	22
USB 3.2 Gen 1 (5 Gbps) downstream connector . . . . .	22
USB ports . . . . .	23
<b>LCD monitor quality and pixel policy</b> . . . . .	<b>23</b>
<b>Ergonomics</b> . . . . .	<b>24</b>
<b>Handling and moving your display</b> . . . . .	<b>26</b>



Maintenance guidelines . . . . .	27
Cleaning your monitor . . . . .	27
<b>Setting up the monitor . . . . .</b>	<b>28</b>
Setting up the stand. . . . .	28
Connecting your monitor . . . . .	31
Connecting the USB Type-C and power cables . . . . .	31
Connecting the HDMI and power cables (optional). . . . .	32
Organizing your cables. . . . .	32
Turning on your monitor . . . . .	32
Securing your monitor using Kensington lock (optional). . . . .	33
Removing the monitor stand . . . . .	34
VESA wall mounting (optional) . . . . .	34
<b>Operating the monitor . . . . .</b>	<b>36</b>
Turning on the monitor. . . . .	36
Using the front-panel controls. . . . .	36
Front-panel button . . . . .	37
Using the On-Screen Display (OSD) menu . . . . .	38
Accessing the menu system . . . . .	38
OSD warning message . . . . .	55
Setting the maximum resolution . . . . .	60
Requirements to view or playback HDR content . . . . .	61
Using the tilt, swivel, and vertical extension . . . . .	62
Tilt . . . . .	62
Swivel. . . . .	62
Vertical extension . . . . .	63
Rotating the display . . . . .	63
Rotate clockwise . . . . .	64
Rotate counterclockwise . . . . .	64



Adjusting the rotation display settings of your system . . . 65

**Troubleshooting . . . . . 66**

    Self-test . . . . . 66

    Built-in diagnostics . . . . . 67

    Common problems . . . . . 68

    Product specific problems . . . . . 71

    Universal Serial Bus (USB) specific problems . . . . . 72

    Speakers Specific Problems . . . . . 73

**Appendix . . . . . 74**

    FCC notices (U.S. only) and other regulatory  
    information . . . . . 74

    Contact Dell . . . . . 74

    EU product database for energy label and product  
    information sheet . . . . . 74



# Safety instructions

 **CAUTION: Use of controls, adjustments, or procedures other than those specified in this documentation may result in exposure to shock, electrical hazards, and/or mechanical hazards.**


- Place the monitor on a solid surface and handle it carefully. The screen is fragile and can be damaged if dropped or hit sharply.
- Always be sure that your monitor is electrically rated to operate with the AC power available in your location.
- Keep the monitor in room temperature. Excessive cold or hot conditions can have an adverse effect on the liquid crystal of the display.
- Do not subject the monitor to severe vibration or high impact conditions. For example, do not place the monitor inside a car trunk.
- Unplug the monitor when it is going to be left unused for an extended period of time.
- To avoid electric shock, do not attempt to remove any cover or touch the inside of the monitor.



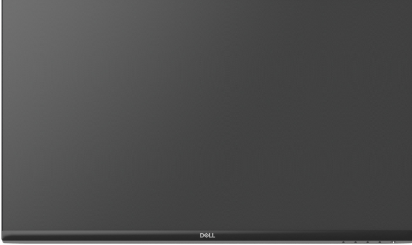



# About your monitor

## Package contents



Your monitor ships with the components shown in the table below. If any component is missing, contact Dell. For more information, see [Contact Dell](#).

 **NOTE: Some items may be optional and may not ship with your monitor. Some features may not be available in certain countries.**

 **NOTE: If you are connecting a stand that you purchased from any other source, follow the setup instructions that are included with the stand.**

Component image	Component description
	Display
	Stand riser
	Stand base
	Power cable (varies by country)



	<p>USB Type-C to USB Type-C 3.2 Gen 2 cable (cable length: 1.00 M)</p>
	<ul style="list-style-type: none"> <li>• Quick Setup Guide</li> <li>• Safety, Environmental, and Regulatory Information</li> </ul>

## Product features

The **Dell S2722QC** monitor has an active matrix, Thin-Film Transistor (TFT), Liquid Crystal Display (LCD) and LED backlight. The monitor features include:

- 68.47 cm (26.95 in.) viewable area (measured diagonally).
- 3840 x 2160 (16:9) resolution, plus full-screen support for lower resolutions.
- Supports AMD FreeSync™, with a refresh rate of 60 Hz and a rapid response time of 4 ms gray to gray in **Extreme** mode\*.
- Color gamut of 99% sRGB.
- Digital connectivity with USB Type-C and HDMI.
- Use a USB Type-C cable to provide power (up to 65 W) to a compatible notebook while receiving video and data signal.
- Tilt, swivel, pivot, and height adjustment capabilities.
- Dual built-in speakers.
- Removable stand and Video Electronics Standards Association (VESA™) 100 mm mounting holes for flexible mounting solutions.
- Equipped with one USB Type-C upstream port (USB 3.2 Gen 1, 5 Gbps), one SuperSpeed USB 5 Gbps (USB 3.2 Gen 1) Type-A downstream charging port, and one SuperSpeed USB 5 Gbps (USB 3.2 Gen 1) Type-A downstream port.
- Plug-and-play capability if supported by your system.
- On-Screen Display (OSD) adjustments for ease of set-up and screen optimization.
- Supports Picture by Picture (PBP) and Picture in Picture (PIP) Select mode.

 **NOTE: When PIP/PBP is activated, AMD FreeSync™ (in AMD Radeon™ software) is disabled.**





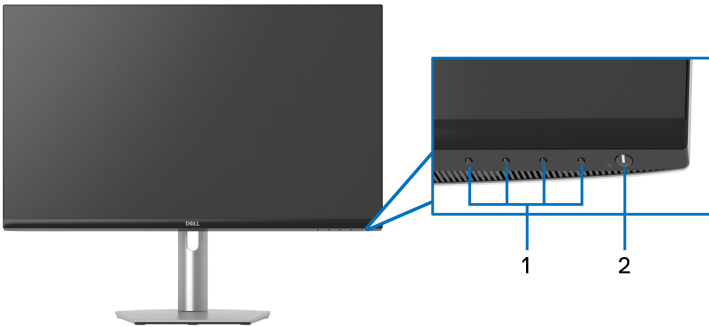
- Power and OSD buttons lock.
- Security-lock slot.
- $\leq 0.3$  W in Standby Mode.
- Optimize eye comfort with a flicker-free screen and ComfortView feature which minimizes blue light emission.

**⚠ WARNING: The possible long-term effects of blue light emission from the monitor may cause damage to the eyes, including eye fatigue, digital eye strain, and so on. ComfortView feature is designed to reduce the amount of blue light emitted from the monitor to optimize eye comfort.**

\*The 4 ms gray-to-gray mode is achievable in **Extreme** mode to reduce visible motion blur and increased image responsiveness. However, this may introduce some slight and noticeable visual artifacts into the image. As every system setup and every user's needs are different, we recommend that users experiment with the different modes to find the setting that is right for them.

## Identifying parts and controls

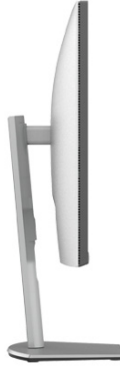
### Front view



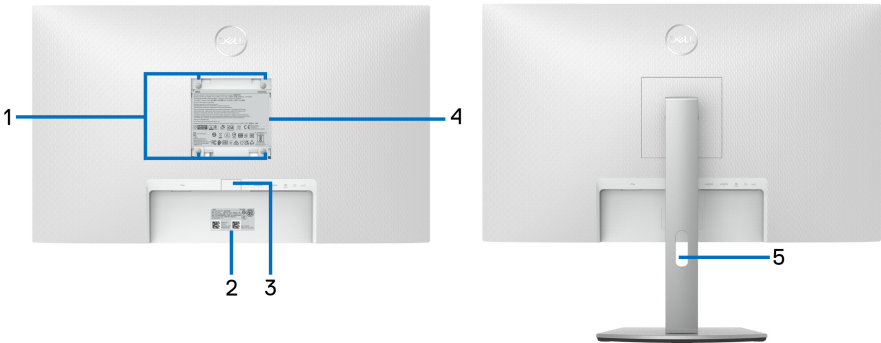
Label	Description	Use
1	Function buttons	For more information, see <a href="#">Operating the monitor</a> .
2	Power On/Off button (with LED indicator)	To turn the monitor on or off.



## Side View



## Back view



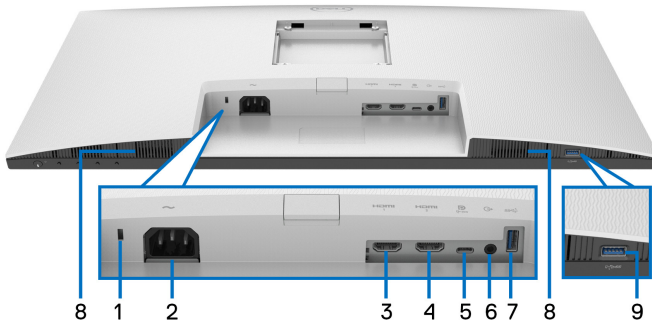
## Back view with monitor stand

Label	Description	Use
1	VESA mounting holes (100 mm x 100 mm - behind attached VESA Cover)	Wall-mount the monitor using VESA-compatible wall mount kit (100 mm x 100 mm).



<b>2</b>	Barcode, serial number, and Service Tag label	Refer to this label if you need to contact Dell for technical support. The Service Tag is a unique alphanumeric identifier that enables Dell service technicians to identify the hardware components in your monitor and access warranty information.
<b>3</b>	Stand-release button	Releases stand from the monitor.
<b>4</b>	Regulatory label	Lists the regulatory approvals.
<b>5</b>	Cable-management slot	Use to organize cables by inserting them through the slot.

**Bottom view**



**Bottom view without monitor stand**

<b>Label</b>	<b>Description</b>	<b>Use</b>
<b>1</b>	Security-lock slot	Secure the monitor with a security lock (security lock not included).
<b>2</b>	Power connector	Connect the power cable (shipped with your monitor).
<b>3</b>	HDMI port (HDMI 1)	Connect to your computer with the HDMI cable.
<b>4</b>	HDMI port (HDMI 2)	



5	USB Type-C upstream port	<p>Connect the USB Type-C cable that came with your monitor to the computer. This port supports USB Power Delivery, Data, and DisplayPort video signal. The SuperSpeed USB 5 Gbps (USB 3.2 Gen 1) Type-C port supports Alternate Mode DP1.4 with a maximum resolution of 3840 x 2160 at 60 Hz, PD 20 V/3.25 A, 15 V/3 A, 9 V/3 A, 5 V/3 A.</p> <p><b>NOTE:</b> USB Type-C is not supported on versions of Windows prior to Windows 10.</p>
6	Line-out port	<p>Connect your speakers.</p> <p><b>NOTE:</b> This port does not support headphones.</p>
7	SuperSpeed USB 5 Gbps (USB 3.2 Gen 1) Type-A downstream port	<p>Connect your USB device.</p> <p><b>NOTE:</b> To use this port, you must connect the USB Type-C cable that came with your monitor to the USB Type-C upstream port on the monitor and to your computer.</p>
8	Speakers	<p>Provides audio output.</p>
9	SuperSpeed USB 5 Gbps (USB 3.2 Gen 1) Type-A downstream port with Power Charging	<p>Connect your USB device or charge your device.</p> <p><b>NOTE:</b> To use this port, you must connect the USB Type-C cable that came with your monitor to the USB Type-C upstream port on the monitor and to your computer.</p>



## Monitor specifications

<b>Model</b>	<b>S2722QC</b>
Screen type	Active matrix - TFT LCD
Panel technology	IPS
Aspect ratio	16:9
Viewable image	
Diagonal	684.67 mm (26.95 in.)
Width (active area)	596.74 mm (23.49 in.)
Height (active area)	335.66 mm (13.21 in.)
Total area	200301.75 mm <sup>2</sup> (310.30 in. <sup>2</sup> )
Pixel pitch	0.1554 x 0.1554 mm
Pixel per inch (PPI)	163
Viewing angle	
Vertical	178° (typical)
Horizontal	178° (typical)
Luminance output	350 cd/m <sup>2</sup> (typical)
Contrast ratio	1000 to 1 (typical)
Faceplate coating	Anti-Glare treatment of the front polarizer (Haze 25%, 3H)
Backlight	White LED edgelight system
Response time	<p>8 ms gray to gray in <b>Normal</b> mode</p> <p>5 ms gray to gray in <b>Fast</b> mode</p> <p>4 ms gray to gray in <b>Extreme</b> mode*</p> <p>*The 4 ms gray-to-gray mode is achievable in <b>Extreme</b> mode to reduce visible motion blur and increased image responsiveness. However this may introduce some slight and noticeable visual artifacts into the image. As every system setup and every user's needs are different, we recommend that users experiment with the different modes to find the setting that is right for them.</p>



Color depth	1.07 billion colors
Color gamut	sRGB 99% (typical)
Connectivity	<ul style="list-style-type: none"> <li>• 1 x USB Type-C upstream port (Alternate mode with DisplayPort 1.4, Power Delivery up to 65 W)*</li> <li>• 1 x SuperSpeed USB 5 Gbps (USB 3.2 Gen 1) with BC1.2 charging capability at 2 A (maximum)</li> <li>• 1 x SuperSpeed USB 5 Gbps (USB 3.2 Gen 1) downstream port</li> <li>• 2 x HDMI ports version 2.0 (HDCP 2.3 &amp; 1.4)</li> <li>• 1 x audio line-out port</li> </ul>
Border width (edge of monitor to active area)	
Top	7.42 mm
Left/Right	7.43 mm/7.43 mm
Bottom	21.55 mm
Adjustability	
Tilt	-5° to 21°
Swivel	-30° to 30°
Pivot	-90° to 90°
Height adjustable stand	110 mm
Built-in speakers	2 x 3 W sound output
Dell Display Manager compatibility	Easy Arrange and other key features
Security	Security-lock slot (cable lock sold separately)

\*DisplayPort and USB Type-C (Alternate mode with DisplayPort 1.4): HBR3/DisplayPort 1.4/ DP audio is supported.



## Resolution specifications

Model	S2722QC
Horizontal scan range	10 kHz to 137 kHz (automatic)
Vertical scan range	24 Hz to 76 Hz (automatic)
Maximum preset resolution	3840 x 2160 at 60 Hz

## Supported video modes

Model	S2722QC
Video display capabilities (HDMI & USB Type-C alternate mode)	480p, 480i, 576p, 576i, 720p, 1080i, 1080p, QHD, UHD

## Preset display modes

### HDMI display modes

Display mode	Horizontal frequency (kHz)	Vertical frequency (Hz)	Pixel clock (MHz)	Sync polarity (Horizontal/Vertical)
720 x 400	31.47	70.08	28.32	-/+
VESA, 640 x 480	31.50	59.94	25.20	-/-
VESA, 640 x 480	37.50	75.00	31.50	-/-
VESA, 800 x 600	37.90	60.30	40.00	+/+
VESA, 800 x 600	46.90	75.00	49.50	+/+
VESA, 1024 x 768	48.40	60.00	65.00	-/-
VESA, 1024 x 768	60.00	75.00	78.80	+/+
VESA, 1152 x 864	67.50	75.00	108.00	+/+
VESA, 1280 x 1024	64.00	60.00	108.00	+/+
VESA, 1280 x 1024	80.00	75.00	135.00	+/+
VESA, 1600 x 900	60.00	60.00	108.00	+/+
VESA, 1600 x 1200	75.00	60.00	162.00	+/+



VESA, 1920 x 1080	67.50	60.00	148.50	+/+
2048 x 1280	78.92	59.92	174.25	-/+
2560 x 1440	88.79	59.95	241.50	+/-
3840 x 2160	135.00	60.00	594.00	+/+

## DP display modes

Display mode	Horizontal frequency (kHz)	Vertical frequency (Hz)	Pixel clock (MHz)	Sync polarity (Horizontal/Vertical)
720 x 400	31.47	70.08	28.32	-/+
VESA, 640 x 480	31.50	59.94	25.20	-/-
VESA, 640 x 480	37.50	75.00	31.50	-/-
VESA, 800 x 600	37.90	60.30	40.00	+/+
VESA, 800 x 600	46.90	75.00	49.50	+/+
VESA, 1024 x 768	48.40	60.00	65.00	-/-
VESA, 1024 x 768	60.00	75.00	78.80	+/+
VESA, 1152 x 864	67.50	75.00	108.00	+/+
VESA, 1280 x 1024	64.00	60.00	108.00	+/+
VESA, 1280 x 1024	80.00	75.00	135.00	+/+
VESA, 1600 x 900	60.00	60.00	108.00	+/+
VESA, 1600 x 1200	75.00	60.00	162.00	+/+
VESA, 1920 x 1080	67.50	60.00	148.50	+/+
2048 x 1280	78.92	59.92	174.25	-/+
2560 x 1440	88.79	59.95	241.50	+/-
3840 x 2160	133.31	60.00	533.25	+/-

 **NOTE: This monitor supports AMD FreeSync™.**





## Electrical specifications

Model	S2722QC
Video input signals	<ul style="list-style-type: none"> <li>• HDMI 2.0, 600 mV for each differential line, 100 <math>\Omega</math> input impedance per differential pair</li> <li>• USB Type-C (Alternate mode with DisplayPort 1.4), 90 <math>\Omega</math> input impedance per differential pair</li> </ul>
AC input voltage/frequency/current	100 VAC to 240 VAC / 50 Hz or 60 Hz $\pm$ 3 Hz / 2 A (typical)
Inrush current	<ul style="list-style-type: none"> <li>• 120 V: 40 A (Max.) at 0°C (cold start)</li> <li>• 240 V: 80 A (Max.) at 0°C (cold start)</li> </ul>
Power consumption	<ul style="list-style-type: none"> <li>• 0.2 W (Off mode)<sup>1</sup></li> <li>• 0.3 W (Standby Mode)<sup>1</sup></li> <li>• 24.8 W (On mode)<sup>1</sup></li> <li>• 155 W (Max.)<sup>2</sup></li> <li>• 26.5 W (Pon)<sup>3</sup></li> <li>• 94.35 kWh (TEC)<sup>3</sup></li> </ul>

<sup>1</sup> As defined in EU 2019/2021 and EU 2019/2013.

<sup>2</sup> Max. brightness and contrast setting with maximum power loading on all USB ports.

<sup>3</sup> Pon: Power consumption of On Mode measured with reference to Energy Star test method.

TEC: Total energy consumption in kWh measured with reference to Energy Star test method.

This document is informational only and reflects laboratory performance. Your product may perform differently, depending on the software, components and peripherals you ordered and shall have no obligation to update such information.

Accordingly, the customer should not rely upon this information in making decisions about electrical tolerances or otherwise. No warranty as to accuracy or completeness is expressed or implied.



## Physical characteristics

<b>Model</b>	<b>S2722QC</b>
<b>Signal cable type</b>	<ul style="list-style-type: none"> <li>• Digital: HDMI, 19 pins (cable not included)</li> <li>• Digital: Universal Series Bus: Type-C, 24 pins</li> </ul>
<p><b>NOTE:</b> Dell monitors are designed to work optimally with the video cables that are shipped with your monitor. As Dell does not have control over the different cable suppliers in the market, the type of material, connector and process used to manufacture these cables, Dell does not guarantee video performance on cables that are not shipped with your Dell monitor.</p>	
<b>Dimensions (with stand)</b>	
Height (extended)	510.05 mm (20.08 in.)
Height (compressed)	400.05 mm (15.75 in.)
Width	611.60 mm (24.08 in.)
Depth	174.72 mm (6.88 in.)
<b>Dimensions (without stand)</b>	
Height	364.64 mm (14.35 in.)
Width	611.60 mm (24.08 in.)
Depth	55.43 mm (2.18 in.)
<b>Stand dimensions</b>	
Height (extended)	403.10 mm (15.87 in.)
Height (compressed)	364.81 mm (14.36 in.)
Width	256.99 mm (10.12 in.)
Depth	174.72 mm (6.88 in.)
<b>Weight</b>	
Weight with packaging	9.79 kg (21.58 lb)
Weight with stand assembly and cables	7.10 kg (15.65 lb)
Weight without stand assembly (For wall mount or VESA mount considerations - no cables)	5.37 kg (11.84 lb)



Weight of stand assembly	1.50 kg (3.31 lb)
--------------------------	-------------------

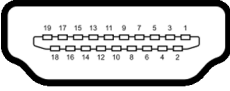
## Environmental characteristics

<b>Model</b>	<b>S2722QC</b>
<b>Compliant standards</b>	
<ul style="list-style-type: none"> <li>• RoHS-compliant</li> <li>• BFR/PVC reduce monitor (Its circuit boards are made from BFR/PVC-free laminates.)</li> <li>• Arsenic-free glass and Mercury-free for the panel only</li> </ul>	
<b>Temperature</b>	
Operating	0°C to 40°C (32°F to 104°F)
Non-operating	<ul style="list-style-type: none"> <li>• Storage: -20°C to 60°C (-4°F to 140°F)</li> <li>• Shipping: -20°C to 60°C (-4°F to 140°F)</li> </ul>
<b>Humidity</b>	
Operating	10% to 80% (non-condensing)
Non-operating	<ul style="list-style-type: none"> <li>• Storage: 5% to 90% (non-condensing)</li> <li>• Shipping: 5% to 90% (non-condensing)</li> </ul>
<b>Altitude</b>	
Operating	5,000 m (16,404 ft) (maximum)
Non-operating	12,192 m (40,000 ft) (maximum)
<b>Thermal dissipation</b>	<ul style="list-style-type: none"> <li>• 528.88 BTU/hour (maximum)</li> <li>• 84.76 BTU/hour (typical)</li> </ul>



## Pin assignments

### HDMI connector



Pin number	19-pin side of the connected signal cable
1	TMDS DATA 2+
2	TMDS DATA 2 SHIELD
3	TMDS DATA 2-
4	TMDS DATA 1+
5	TMDS DATA 1 SHIELD
6	TMDS DATA 1-
7	TMDS DATA 0+
8	TMDS DATA 0 SHIELD
9	TMDS DATA 0-
10	TMDS CLOCK+
11	TMDS CLOCK SHIELD
12	TMDS CLOCK-
13	CEC
14	Reserved (N.C. on device)
15	DDC CLOCK (SCL)
16	DDC DATA (SDA)
17	DDC/CEC Ground
18	+5 V POWER
19	HOT PLUG DETECT



## Plug and play capability

You can install the monitor in any Plug and Play-compatible system. The monitor automatically provides the computer system with its Extended Display Identification Data (EDID) using Display Data Channel (DDC) protocols so that the system can configure itself and optimize the monitor settings. Most monitor installations are automatic; you can select different settings if desired. For more information about changing the monitor settings, see [Operating the monitor](#).

## Universal Serial Bus (USB) interface

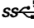
This section gives you information about the USB ports that are available on the monitor.

### SuperSpeed USB 5 Gbps (USB3.2 Gen 1)

Transfer speed	Data rate	Maximum power supported (each port)*
SuperSpeed	5 Gbps	4.50 W
High speed	480 Mbps	4.50 W
Full speed	12 Mbps	4.50 W

### USB Type-C

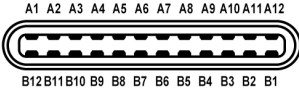
USB Type-C	Description
Video	DisplayPort 1.4**
Data	SuperSpeed USB 5 Gbps (USB 3.2 Gen 1)
Power Delivery (PD)	Up to 65 W

\*Up to 2 A on USB downstream port (with  battery icon) with BC1.2 compliance devices or normal USB devices.

\*\*HBR3/DisplayPort 1.4/DP audio is supported.



## USB Type-C connector



Pin Number	Signal Name	Pin Number	Signal Name
A1	GND	B1	GND
A2	TX1+	B2	TX2+
A3	TX1-	B3	TX2-
A4	VBUS	B4	VBUS
A5	CC1	B5	CC2
A6	D+	B6	D+
A7	D-	B7	D-
A8	SBU1	B8	SBU2
A9	VBUS	B9	VBUS
A10	RX2-	B10	RX1-
A11	RX2+	B11	RX1+
A12	GND	B12	GND

## USB 3.2 Gen 1 (5 Gbps) downstream connector

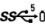


Pin number	9-pin side of the connector
1	VCC
2	D-
3	D+
4	GND
5	SSRX-




6	SSRX+
7	GND
8	SSTX-
9	SSTX+

## USB ports

- 1 USB Type-C (USB 3.2 Gen 1, 5 Gbps) upstream - rear
- 1 SuperSpeed USB Type-A (USB 3.2 Gen 1, 5 Gbps) downstream - rear
- 1 SuperSpeed USB Type-A (USB 3.2 Gen 1, 5 Gbps) downstream - bottom  
Power Charging Port - the port with  battery icon; supports up to 2 A fast-charging capability if the device is BC1.2 compatible.

 **NOTE: SuperSpeed USB 5 Gbps (USB 3.2 Gen 1) functionality requires a SuperSpeed USB 5 Gbps (USB 3.2 Gen 1)-capable computer.**

 **NOTE: The USB ports on the monitor work only when the monitor is turned On or in Standby mode. If you turn Off the monitor and then turn it On, the attached peripherals may take a few seconds to resume normal functionality.**

## LCD monitor quality and pixel policy

During the LCD Monitor manufacturing process, it is not uncommon for one or more pixels to become fixed in an unchanging state which are hard to see and do not affect the display quality or usability. For more information on Dell Monitor Quality and Pixel Policy, see [www.dell.com/pixelguidelines](http://www.dell.com/pixelguidelines).



## Ergonomics

△ **CAUTION: Improper or prolonged usage of keyboard may result in injury.**

△ **CAUTION: Viewing the monitor screen for extended periods of time may result in eye strain.**

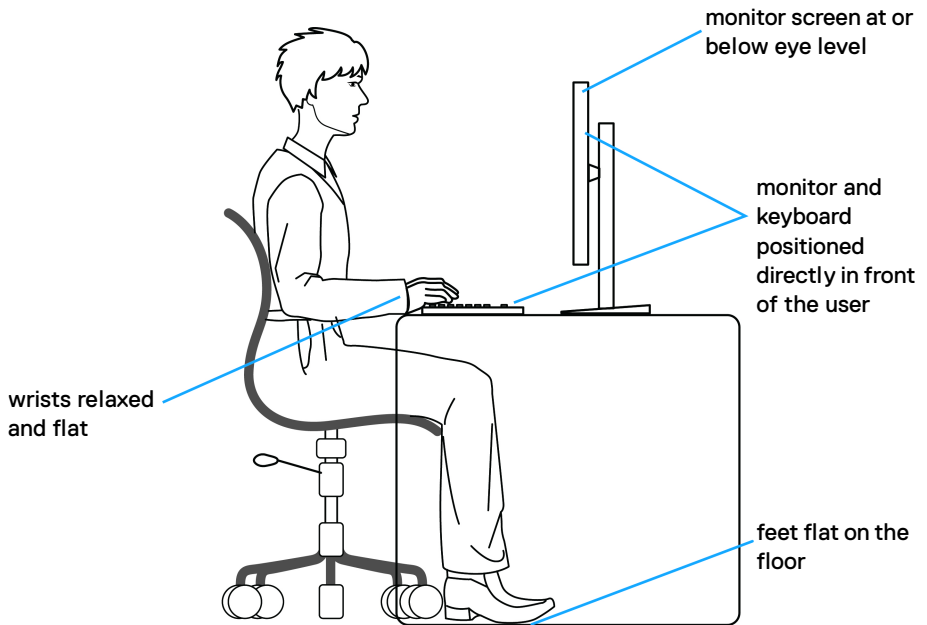
For comfort and efficiency, observe the following guidelines when setting up and using your computer workstation:

- Position your computer so that the monitor and keyboard are directly in front of you as you work. Special shelves are commercially available to help you correctly position your keyboard.
- To reduce the risk of eye strain and neck/arm/back/shoulder pain from using the monitor for long periods of time, we suggest you to:
  1. Set the distance of the screen between 20 to 28 in. (50 - 70 cm) from your eyes.
  2. Blink frequently to moisten your eyes or wet your eyes with water after prolonged usage of the monitor.
  3. Take regular and frequent breaks for 20 minutes every two hours.
  4. Look away from your monitor and gaze at a distant object at 20 feet away for at least 20 seconds during the breaks.
  5. Perform stretches to relieve tension in the neck, arm, back, and shoulders during the breaks.
- Make sure that the monitor screen is at eye level or slightly lower when you are sitting in front of the monitor.
- Adjust the tilt of the monitor, its contrast, and brightness settings.
- Adjust the ambient lighting around you (such as overhead lights, desk lamps, and the curtains or blinds on nearby windows) to minimize reflections and glare on the monitor screen.
- Use a chair that provides good lower-back support.
- Keep your forearms horizontal with your wrists in a neutral, comfortable position while using the keyboard or mouse.
- Always leave space to rest your hands while using the keyboard or mouse.
- Let your upper arms rest naturally on both sides.
- Ensure that your feet are resting flat on the floor.
- When sitting, make sure that the weight of your legs is on your feet and not on the front portion of your seat. Adjust your chair's height or use a footrest if necessary to maintain a proper posture.





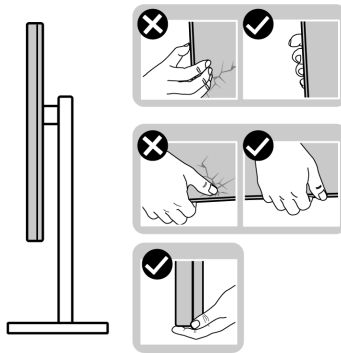
- Vary your work activities. Try to organize your work so that you do not have to sit and work for extended periods of time. Try to stand or get up and walk around at regular intervals.
- Keep the area under your desk clear of obstructions and cables or power cords that may interfere with comfortable seating or present a potential trip hazard.



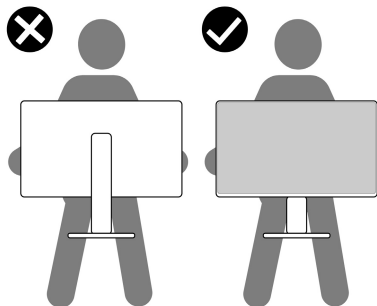
## Handling and moving your display

To ensure the monitor is handled safely when lifting or moving it, follow the guidelines mentioned below:

- Before moving or lifting the monitor, turn off your computer and the monitor.
- Disconnect all cables from the monitor.
- Place the monitor in the original box with the original packing materials.
- Hold the bottom edge and the side of the monitor firmly without applying excessive pressure when lifting or moving the monitor.



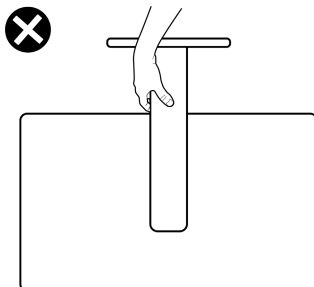
- When lifting or moving the monitor, ensure the screen is facing away from you and do not press on the display area to avoid any scratches or damage.



- When transporting the monitor, avoid any sudden shock or vibration to it.



- When lifting or moving the monitor, do not turn the monitor upside down while holding the stand base or stand riser. This may result in accidental damage to the monitor or cause personal injury.



## Maintenance guidelines

### Cleaning your monitor

△ **CAUTION:** Read and follow the [Safety instructions](#) before cleaning the monitor.

⚠ **WARNING:** Before cleaning the monitor, unplug the monitor power cable from the electrical outlet.

For best practices, follow the instructions in the list below when unpacking, cleaning, or handling your monitor:


- To clean your anti-static screen, lightly dampen a soft, clean cloth with water. If possible, use a special screen-cleaning tissue or solution suitable for the anti-static coating. Do not use benzene, thinner, ammonia, abrasive cleaners, or compressed air.
- Use a lightly-dampened, warm cloth to clean the monitor. Avoid using detergent of any kind as some detergents leave a milky film on the monitor.
- If you notice white powder when you unpack your monitor, wipe it off with a cloth.
- Handle your monitor with care as a darker-colored monitor may get scratched and show white scuff marks more than a lighter-colored monitor.
- To help maintain the best image quality on your monitor, use a dynamically changing screen saver and turn off your monitor when not in use.



# Setting up the monitor

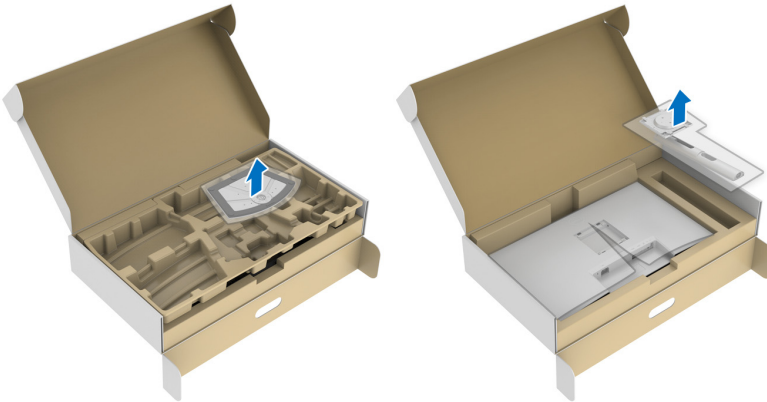
## Setting up the stand

 **NOTE: The stand is not factory-installed.**

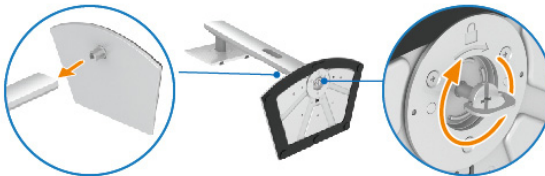
 **NOTE: The following steps are specifically for setting up the stand that is shipped with your monitor. If you are attaching a stand that you purchased from any other source, follow the setup instructions that were included with the stand.**

To set up the monitor stand:

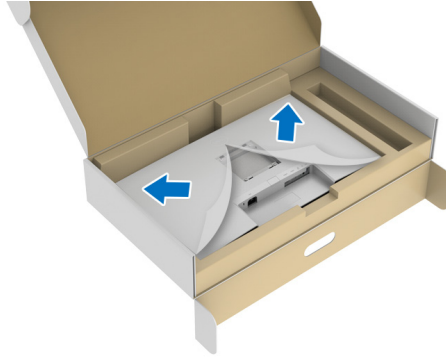
1. Follow the instructions on the flaps of packaging box to remove the stand from the cushion that secures it.
2. Remove the stand base and stand riser from the packaging cushion.



3. Align and place the stand riser on the stand base.
4. Open the screw handle at the bottom of the stand base and turn it clockwise to secure the stand assembly.
5. Close the screw handle.



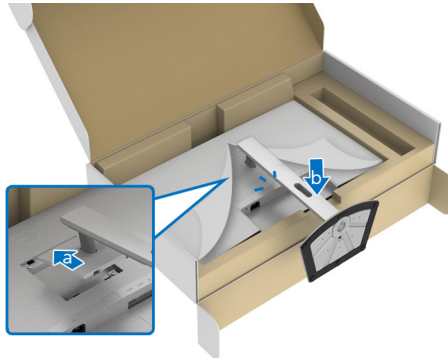
6. Open the protective cover to access the VESA slot on the display.



**NOTE:** Before attaching the stand assembly to the display, ensure that the front plate flap is opened to allow space for assembly.

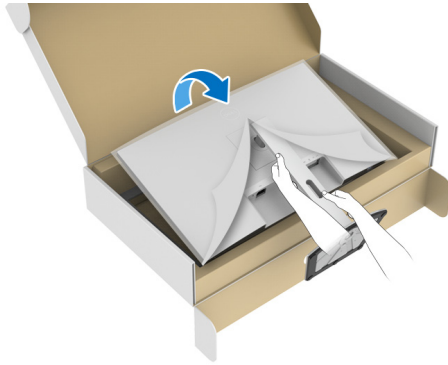
7. Attach the stand assembly to the display.

- a. Align and slide the tabs on the stand riser into the VESA slot.
- b. Press the stand down until it snaps into place.

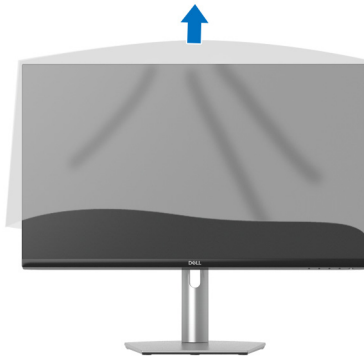


8. Hold the stand riser with both hands firmly and lift the monitor. Then place the monitor in an upright position on a flat surface.

**NOTE: Hold the stand riser firmly when lifting the monitor to avoid any accidental damage.**



9. Lift the protective cover from the monitor.



## Connecting your monitor

**⚠ WARNING:** Before you begin any of the procedures in this section, follow the [Safety instructions](#).

**✎ NOTE:** Dell monitors are designed to work optimally with Dell-supplied inbox cables. Dell does not guarantee the video quality and performance if non-Dell cables are used.

**✎ NOTE:** Route the cables through the cable-management slot before connecting them.

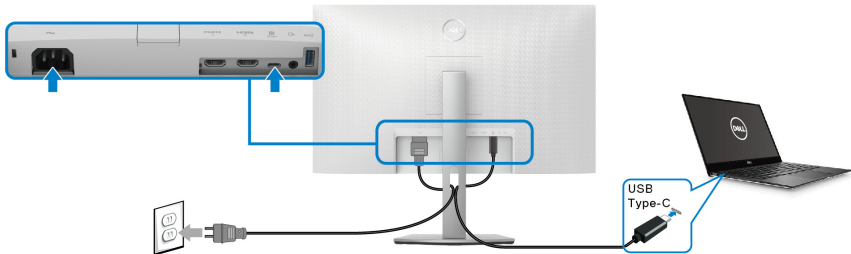
**✎ NOTE:** Do not connect all the cables to the computer at the same time.

**✎ NOTE:** The images are for the purpose of illustration only. The appearance of the computer may vary.

To connect your monitor to the computer:

1. Turn off your computer and disconnect the power cable.
2. Connect the USB Type-C cable (shipped with your monitor) or the HDMI cable from your monitor to the computer. (See [Bottom view](#) for details.)
3. Connect the USB 3.2 Gen 1 peripherals to the USB 3.2 Gen 1 downstream ports on the monitor.

## Connecting the USB Type-C and power cables

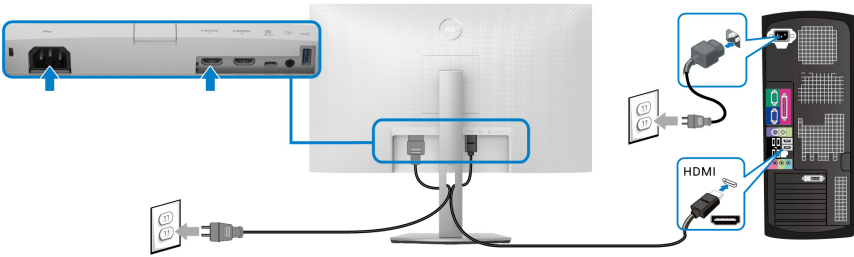


**✎ NOTE:** Use the USB Type-C cable shipped with monitor only.

- This port supports DisplayPort Alternate Mode (DP1.4 standard only).
- The USB Type-C power delivery compliant port (PD Version 3.0) delivers up to 65 W of power.
- If your notebook requires more than 65 W to operate and the battery is drained, it may not be powered up or charged with the USB PD port of this monitor.



## Connecting the HDMI and power cables (optional)

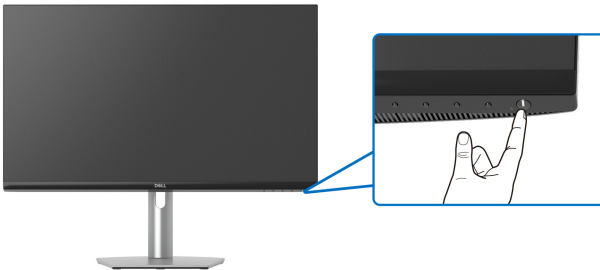


## Organizing your cables



While connecting all the necessary cables (see [Connecting your monitor](#) for cable attachment), organize all the cables as shown above.

## Turning on your monitor



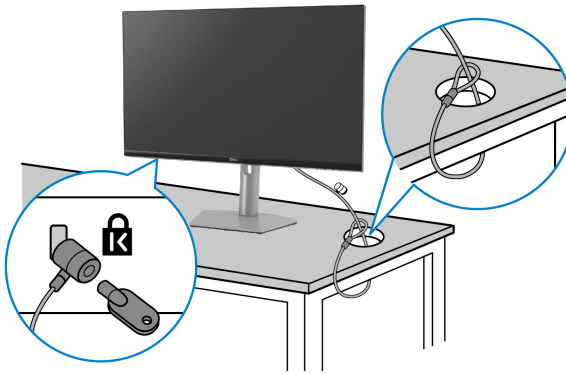


## Securing your monitor using Kensington lock (optional)

The security lock slot is located at the bottom of the monitor (see [Security-lock slot](#)).

For more information on using the Kensington lock (sold separately), see the documentation that is shipped with the lock.



Secure your monitor to a table using the Kensington security lock.



**NOTE:** The image is for the purpose of illustration only. The appearance of the lock may vary.

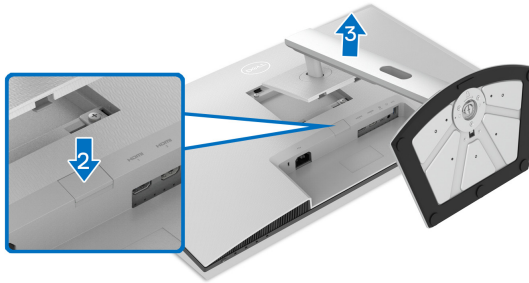


## Removing the monitor stand

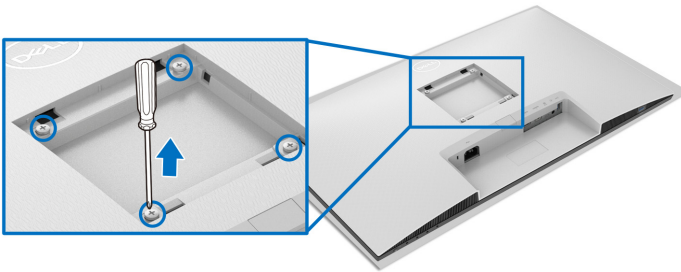
-  **NOTE:** To prevent scratches on the LCD screen when removing the stand, ensure that the monitor is placed on a soft, clean surface.
-  **NOTE:** The following steps are specifically for removing the stand that is shipped with your monitor. If you are removing a stand that you purchased from any other source, follow the setup instructions that were included with the stand.

To remove the stand:

1. Place the monitor on a soft cloth or cushion.
2. Press and hold the stand release button at the back of the display.
3. Lift the stand assembly up and away from the monitor.



## VESA wall mounting (optional)



(Screw dimension: M4 x 10 mm).

Read the instructions that shipped with the VESA-compatible wall mounting kit.

1. Place the display on a soft cloth or cushion on a stable flat table.
2. Remove the monitor stand (see [Removing the monitor stand](#)).



3. Using a Phillips screwdriver, remove the four screws that secure the display back cover.
4. Install the mounting bracket from the wall mounting kit to the display.
5. Mount the monitor on the wall. For more information, see the documentation that is shipped with the wall mounting kit.



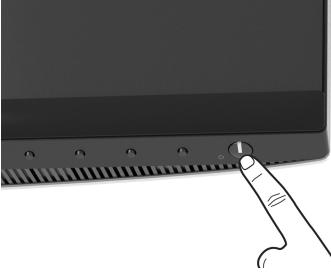
**NOTE: For use only with UL or CSA or GS-listed wall mount bracket with minimum weight or load bearing capacity of 21.48 kg.**



# Operating the monitor

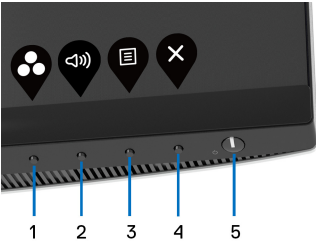
## Turning on the monitor

Press the Power button to turn On the monitor.





## Using the front-panel controls




Use the control buttons on the front of the monitor to adjust settings.



The following table describes the front-panel buttons:

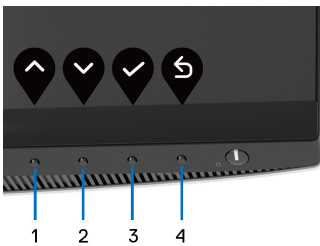
Front-panel button	Description
1  <b>Shortcut key/ Preset Modes</b>	Use this button to choose from a list of preset color modes.
2  <b>Shortcut key/ Volume</b>	To directly access the <b>Volume</b> adjustment slider.







3		Use the <b>MENU</b> button to launch the On-Screen Display (OSD). See <a href="#">Accessing the menu system</a> .
4		Use this button to exit the OSD main menu.
5	 <p data-bbox="202 392 418 483"><b>Power</b> (with power light indicator)</p>	To turn the monitor on or off. Solid white light indicates that the monitor is turned on and functioning normally. Blinking white light indicates that the monitor is in Standby Mode.

### Front-panel button

Use the buttons on the front of the monitor to adjust the image settings.




Front-panel button	Description
<p data-bbox="113 962 146 994">1</p>  <p data-bbox="273 1031 303 1058"><b>Up</b></p>	Use the <b>Up</b> button to adjust (increase ranges) items in the OSD menu.
<p data-bbox="113 1070 146 1102">2</p>  <p data-bbox="253 1139 322 1166"><b>Down</b></p>	Use the <b>Down</b> button to adjust (decrease ranges) items in the OSD menu.
<p data-bbox="113 1174 146 1206">3</p>  <p data-bbox="273 1243 303 1270"><b>OK</b></p>	Use the <b>OK</b> button to confirm your selection.
<p data-bbox="113 1278 146 1310">4</p>  <p data-bbox="253 1347 318 1374"><b>Back</b></p>	Use the <b>Back</b> button to go back to the previous menu.








# Using the On-Screen Display (OSD) menu

## Accessing the menu system





**NOTE:** If you change the settings and then either proceed to another menu or exit the OSD menu, the monitor automatically saves those changes. The changes are also saved if you change the settings and then wait for the OSD menu to disappear.

1. Press the  button to launch the OSD menu and display the main menu.



2. Press the  and  buttons to move between the setting options. As you move from one icon to another, the option name is highlighted. See the following table for a complete list of all the options available for the monitor.
3. Press the , , or  button once to activate the highlighted option.

**NOTE:** The directional buttons (and the OK button) displayed may differ according to the menu you've selected. Use available buttons to make your selection.

4. Press the  and  buttons to select the desired parameter.
5. Press  to enter the submenu and then use the directional buttons, according to the indicators on the menu, to make your changes.
6. Press  to return to the main menu.



Icon	Menu and Submenus	Description
------	-------------------	-------------





**Brightness/Contrast**

Adjusts the brightness and the contrast of the display.



**Brightness**



**Brightness** adjusts the luminance of the backlight.

Press the  button to increase the brightness and press the  button to decrease the brightness (min. 0 / max. 100).

**NOTE:** Manual adjustment of **Brightness** is disabled when **Smart HDR** is activated and HDR content is displayed.

**Contrast**

Adjusts the **Brightness** first, and then adjust the **Contrast** only if further adjustment is necessary.

Press the  button to increase the contrast and press the  button to decrease the contrast (min. 0 / max. 100).

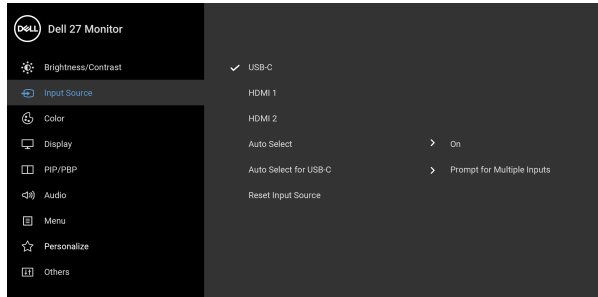
The **Contrast** function adjusts the degree of difference between darkness and lightness on the monitor screen.






## Input Source

Selects between the different video signals that may be connected to your monitor.



---

### USB-C

Select the **USB-C** input when you are using the USB Type-C connector. Press the  button to confirm the selection.


---

### HDMI 1

Select the **HDMI 1** or **HDMI 2** input when you are

---

### HDMI 2

using the HDMI connector. Press the  button to confirm the selection.

---

### Auto Select


Automatically scans for available input sources.

---

### Auto Select for USB-C

Allows you to set Auto Select for USB-C to:

- **Prompt for Multiple Inputs:** Always displays the “**Switch to USB-C Video Input**” message for you to choose whether to switch or not.
- **Yes:** Always switches to USB-C video input (without asking) when the USB Type-C cable is connected.
- **No:** Never automatically switches to USB-C video input when the USB Type-C cable is connected.

**NOTE:** Press the  button to confirm the selection. The option is available only when **Auto Select** is on.

---

### Reset Input Source

Resets your monitor input settings to the factory settings.

---

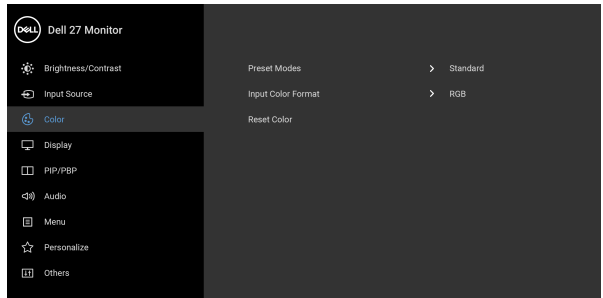






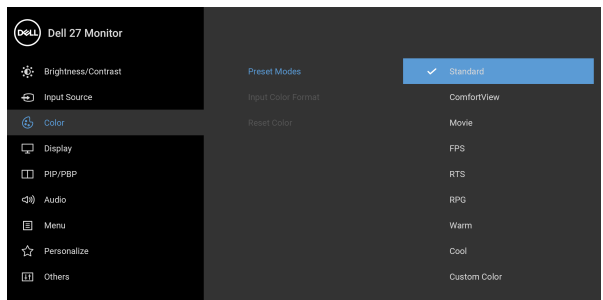
## Color

Use **Color** to adjust the color setting mode.



## Preset Modes

Allows you to choose a preset mode from the list.



- **Standard:** Loads the monitor's default color settings. This is the default preset mode.
- **ComfortView:** Decreases the level of blue light emitted from the screen to make viewing more comfortable for your eyes.

**WARNING: The possible long-term effects of blue light emission from the monitor may cause personal injury such as digital eye strain, eye fatigue and damage to the eyes. Using monitor for extended periods of time may also cause pain in parts of body such as neck, arm, back and shoulder. For more information, see [Ergonomics](#).**



---

## Preset Modes

- **Movie:** Loads color settings ideal for movies.
- **FPS:** Loads color settings ideal for First-Person Shooter (FPS) games.
- **RTS:** Loads color settings ideal for Real-Time Strategy (RTS) games.
- **RPG:** Loads color settings ideal for Role-Playing Games (RPG).
- **Warm:** Presents colors at lower color temperatures. The screen appears warmer with a red/yellow tint.
- **Cool:** Presents colors at higher color temperatures. The screen appears cooler with a blue tint.
- **Custom Color:** Allows you to manually adjust the color settings.

Use the arrow buttons to adjust the three colors (R, G, B) values and create your own preset color mode.

---




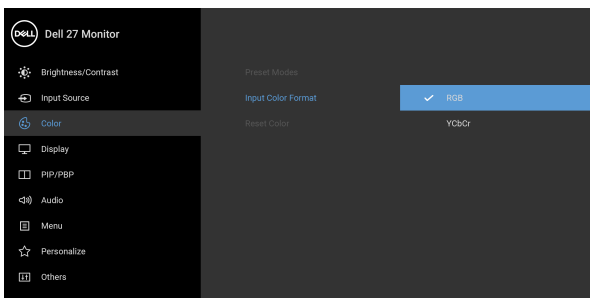
---

## Input Color Format

Allows you to set the video input mode to:



- **RGB:** Select this option if your monitor is connected to a computer or a media player that supports RGB output.
- **YCbCr:** Select this option if your media player supports only YCbCr output.

Press the  button to confirm the selection.



---



## Hue

This feature can shift the color of the video image to green or purple. This is used to adjust the desired flesh tone color. Use  or  to adjust the hue from '0' to '100'.

**NOTE: Hue** adjustment is available only when you select **Movie**, **FPS**, **RTS**, or **RPG** preset mode.

---

## Saturation

This feature can adjust the color saturation of the video image. Use  or  to adjust the saturation from '0' to '100'.

**NOTE: Saturation** adjustment is available only when you select **Movie**, **FPS**, **RTS**, or **RPG** preset mode.

---

## Reset Color

Resets your monitor's color settings to the factory settings.

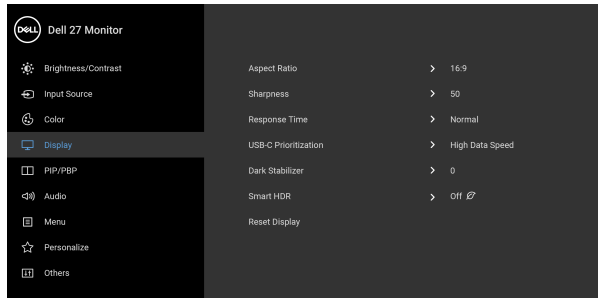
---





## Display

Use the **Display** menu to adjust the images.





### Aspect Ratio

Adjusts the image ratio to **16:9**, **Auto Resize**, **4:3**, or **1:1**.

**NOTE:** The feature is disabled when **PIP/PBP** is activated.

### Sharpness

This feature can make the image look sharper or softer.

Use  or  to adjust the sharpness from '0' to '100'.

### Response Time

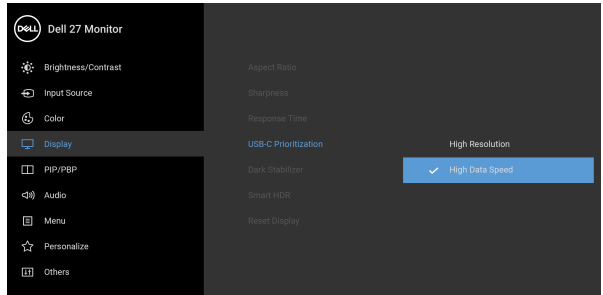
Allows you to set the **Response Time** to **Normal**, **Fast**, or **Extreme**.



---

## USB-C Prioritization

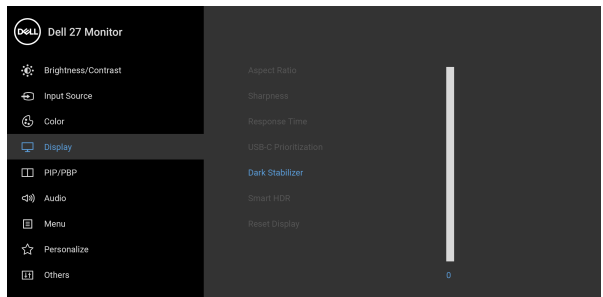
Allows you to specify the priority to transfer the data with high resolution (**High Resolution**) or high speed (**High Data Speed**) when using the USB Type-C port. If the current platform is DP 1.4 (HBR3), use **High Data Speed** to access full video performance with high data speed. If the current platform is DP 1.2 (HBR2) or below, select **High Resolution** for accessing full video performance with data and network speed drop.



---

## Dark Stabilizer

Improves the visibility in the dark gaming scenarios. The higher the value (0 to 3), the more visible the display image will be in dark environment.



**NOTE:** The feature is disabled when **Smart HDR** or **PIP/PBP** is activated.

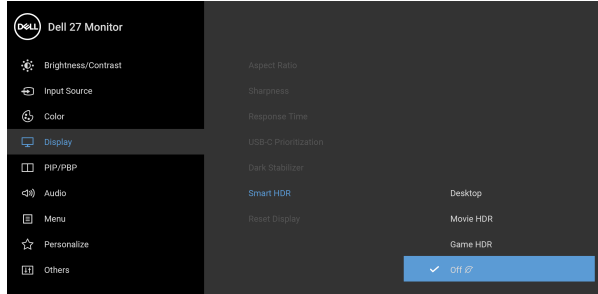
---



---

## Smart HDR

The **Smart HDR** (High Dynamic Range) feature enhances the display output by optimally adjusting contrast and the ranges of color and luminosity to resemble true-to-life visuals. The default setting is **Off**.



You may set the **Smart HDR** mode to:

- **Desktop:** Suitable for using the monitor with a desktop computer.
- **Movie HDR:** Suitable for the playback of HDR video content.
- **Game HDR:** Suitable for playing HDR-compatible games. It displays more realistic scenes and makes the gaming experience immersive and entertaining.

**NOTE:** When the monitor is processing HDR content, **Preset Modes** and **Brightness** will be disabled.

**NOTE:** The feature is disabled when **PIP/PBP** is activated.

---

## Reset Display

Resets all display settings to the factory preset values.

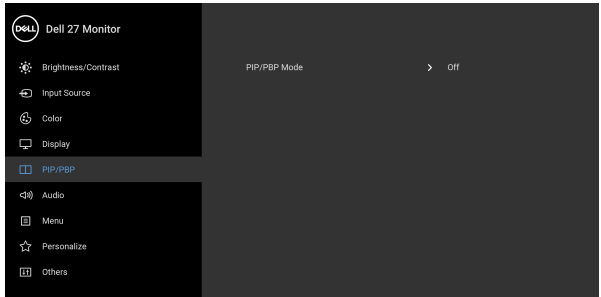
---





## PIP/PBP

This function brings up a window displaying image from another input source.



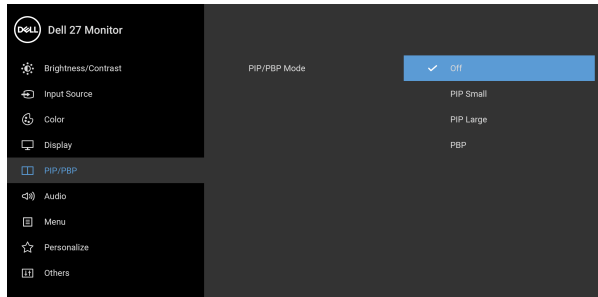
Main Window	Sub-Window		
	USB-C	HDMI 1	HDMI 2
USB-C	—	✓	✓
HDMI 1	✓	—	✓
HDMI 2	✓	✓	—

**NOTE:** The images under PBP mode will be displayed at the center of the split windows.



---

**PIP/PBP Mode** Adjusts the PIP/PBP (Picture in Picture/Picture by Picture) mode to PIP or PBP. You can disable this feature by selecting **Off**.



<b>PIP Small</b>	
<b>PIP Large</b>	
<b>PBP</b>	

---

**PIP/PBP (Sub)** Select between the different video signals that may be connected to your monitor for the PIP/PBP sub-window. Press the button to confirm the selection.

---

**PIP Location** Adjusts the position of the PIP sub-window.

Use or to browse and to select **Top-Right**, **Top-Left**, **Bottom-Right**, or **Bottom-Left**.

Press the button to confirm the selection.

**NOTE:** The option is available only when the PIP mode is activated.

---

**Audio** Allows you to set the audio source from the main window or the sub-window.


---





---



**Video Swap**

Select to swap videos between main window and sub-window in PIP/PBP mode. Press the  button to confirm the selection.

---

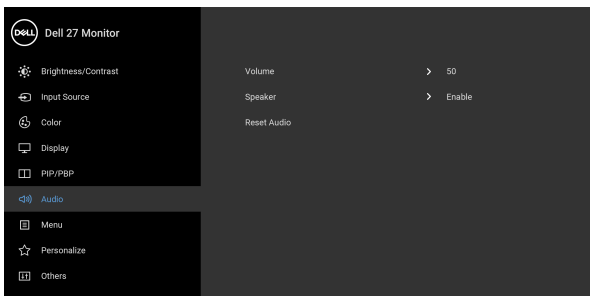
**Contrast (Sub)**

Adjust the contrast level of the picture in PIP/PBP mode.

Use  to increase the contrast and use  to decrease the contrast.





---

**Audio**

---

**Volume**

Adjusts the volume of speakers.

Use  or  to adjust the volume level from '0' to '100'.

---

**Speaker**

Allows you to enable or disable the speaker function.

---

**Reset Audio**

Select this option to restore default audio settings.

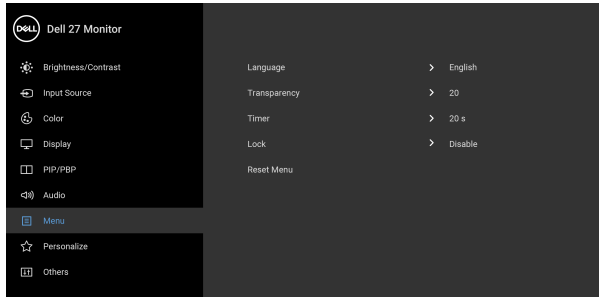
---





## Menu



Select this option to adjust the settings of the OSD, such as, the languages of the OSD, the amount of time the menu remains on screen, and so on.



## Language



Sets the OSD display to one of the eight languages (English, Spanish, French, German, Brazilian Portuguese, Russian, Simplified Chinese, or Japanese).

## Transparency

Select this option to change the menu transparency by pressing the  and  buttons (min. 0 / max. 100).

## Timer

Sets the length of time the OSD will remain active after the last time you pressed a button.

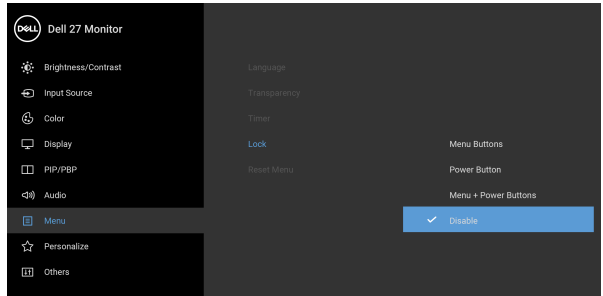
Use  or  to adjust the slider in 1 second increments, from 5 to 60 seconds.



---

## Lock

With the control buttons on the monitor locked, you can prevent people from accessing the controls. It also prevents accidental activation in multiple monitors side-by-side setup.



- **Menu Buttons:** All Menu/function buttons (except the Power button) are locked and not accessible by the user.
- **Power Button:** Only the Power button is locked and not accessible by the user.
- **Menu + Power Buttons:** Both the Menu/function and Power buttons are locked and not accessible by the user.

The default setting is **Disable**.

Alternative Lock Method [for Menu/function buttons]: You can also press and hold the Menu/function button next to the Power button for 4 seconds to set the lock options.

**NOTE:** To unlock the button(s), press and hold the Menu/function button next to the Power button for 4 seconds.

---

## Reset Menu

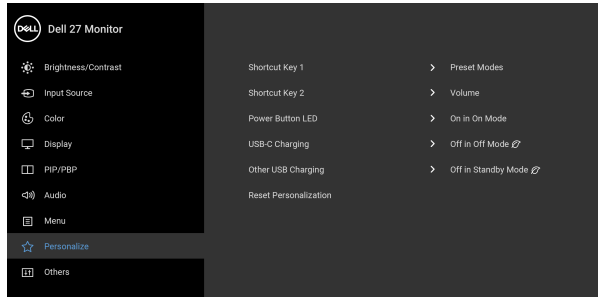
Resets all OSD settings to the factory preset values.

---





## Personalize



---

<b>Shortcut Key 1</b>	Allows you to choose a feature from <b>Preset Modes</b> , <b>Brightness/Contrast</b> , <b>Input Source</b> , <b>Aspect Ratio</b> , <b>Smart HDR</b> , <b>PIP/PBP Mode</b> , <b>Video Swap</b> , or <b>Volume</b> and set it as a shortcut key.
<b>Shortcut Key 2</b>	

---

<b>Power Button LED</b>	Allows you to set the power LED indicator on or off to save energy.
-------------------------	---

---

<b>USB-C Charging</b>	The default setting is <b>Off in Off Mode</b> . Selecting <b>On in Off Mode</b> may automatically charge your notebook or mobile devices through the USB Type-C cable even when the monitor is in off mode.
-----------------------	---

---

<b>Other USB Charging</b>	Allows you to enable or disable USB Type-A (Downstream Ports) charging function during monitor standby mode.
---------------------------	--

---

<b>Reset Personalization</b>	Resets all settings under the <b>Personalize</b> menu to the factory preset values.
------------------------------	---

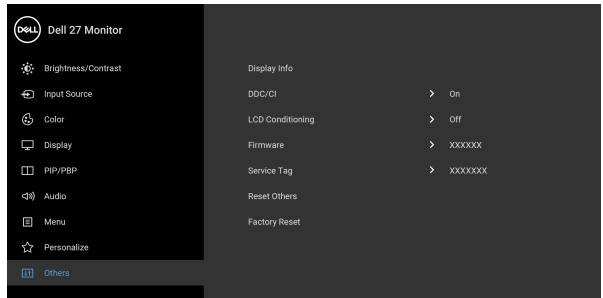
---





## Others

Select this option to adjust the OSD settings, such as **DDC/CI**, **LCD Conditioning**, and so on.

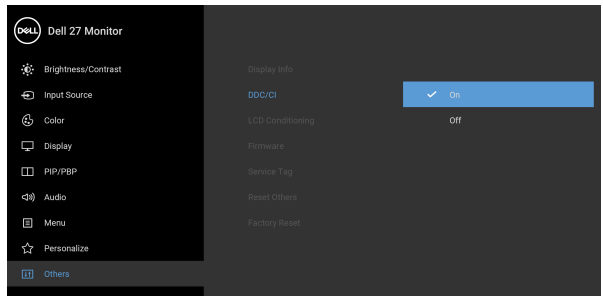


## Display Info

Displays the monitor's current settings.

### DDC/CI

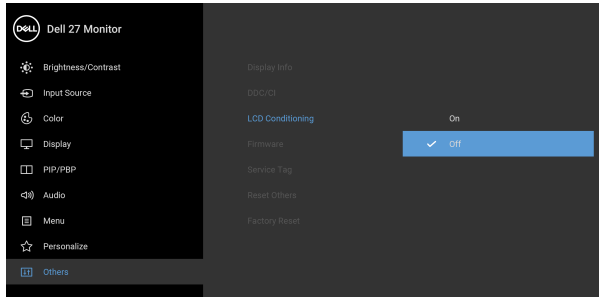
**DDC/CI** (Display Data Channel/Command Interface) allows your monitor parameters (brightness, color balance, etc.) to be adjustable via the software on your computer. You can disable this feature by selecting **Off**. Enable this feature for best user experience and optimum performance of your monitor.



---

## LCD Conditioning

Helps reduce minor cases of image retention. Depending on the degree of image retention, the program may take some time to run. You can enable this feature by selecting **On**.



---

**Firmware** Displays the firmware version of your monitor

**Service Tag** Displays the service tag of your monitor. This string is required when you look for phone support, check your warranty status, update drivers on Dell's website, etc.

**Reset Others** Resets all settings under the **Others** menu to the factory preset values.

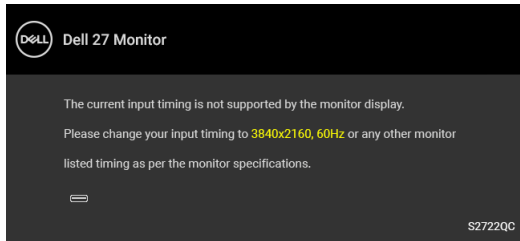
**Factory Reset** Restores all preset values to the factory default settings.

---



## OSD warning message

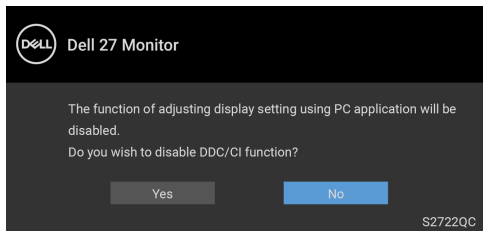
When the monitor does not support a particular resolution mode, you will see the following message:



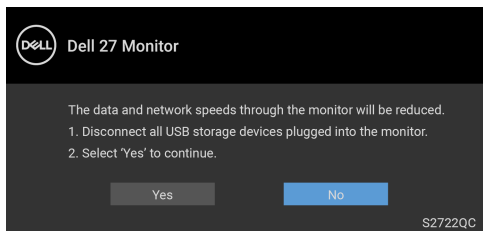
This means that the monitor cannot synchronize with the signal that it is receiving from the computer. See [Monitor specifications](#) for the Horizontal and Vertical frequency ranges addressable by this monitor. The recommended mode is 3840 x 2160.

 **NOTE: The message may slightly differ, depending on the connected input signal.**

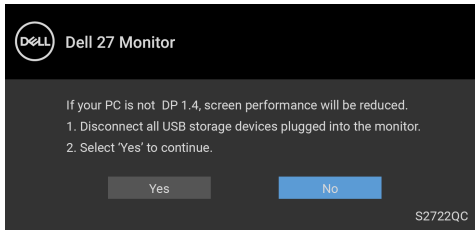
You will see the following message before the **DDC/CI** function is disabled:



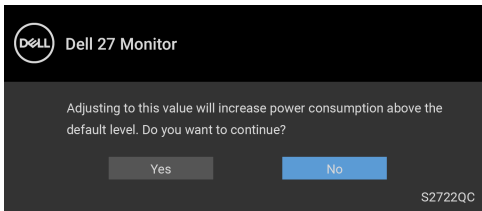
When **USB-C Prioritization** is set to **High Resolution**, the following message appears:



When **USB-C Prioritization** is set from **High Resolution** to **High Data Speed**, the following message appears:

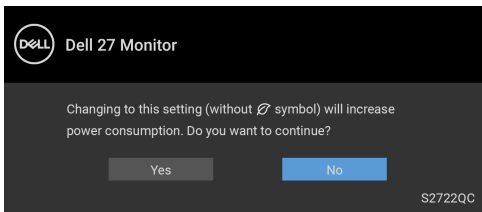


When you adjust the **Brightness** level for the first time, the following message appears:



**NOTE:** If you select **Yes**, the message will not appear the next time you change the **Brightness** setting.

When you change the default setting of power saving features for the first time, such as **Smart HDR**, **USB-C Charging**, or **Other USB Charging**, the following message appears:

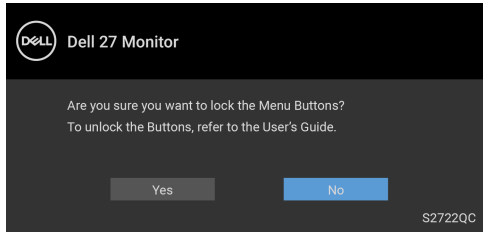


**NOTE:** If you select **Yes** for either of the features mentioned above, the message will not appear the next time you change the settings of these features. When you perform a factory reset, the message will appear again.



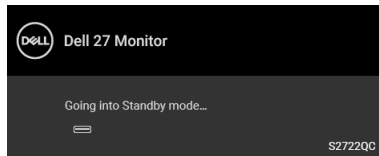


You will see the following message before the **Lock** function is activated:



**NOTE:** The message may slightly differ, depending on the selected settings.

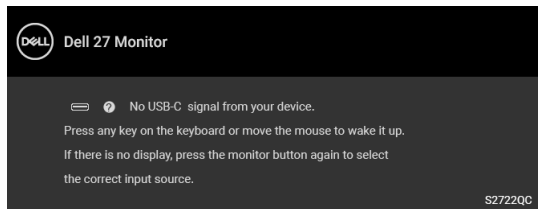
When the monitor goes into **Standby** mode, the following message appears:



Activate the computer and wake up the monitor to gain access to the [OSD](#).

**NOTE:** The message may slightly differ, depending on the connected input signal.

The OSD functions only in the normal operation mode. If you press any button other than the power button during the Standby mode, the following message will appear depending on the selected input:

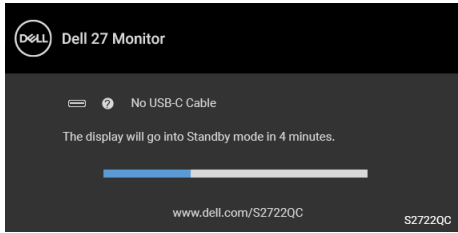


Activate the computer and the monitor to gain access to the [OSD](#).

**NOTE:** The message may slightly differ, depending on the connected input signal.

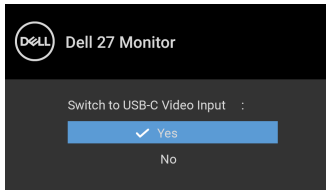


If either USB-C or HDMI input is selected and the corresponding cable is not connected, a floating dialog box as shown below appears.

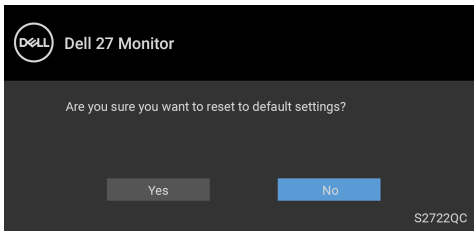


**NOTE:** The message may slightly differ, depending on the connected input signal.

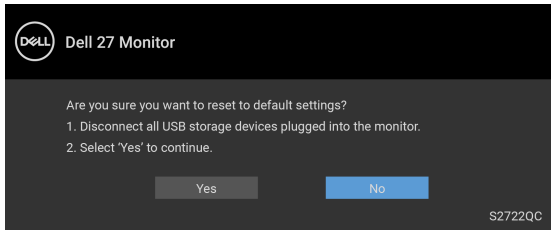
When the monitor is under HDMI input and a USB Type-C cable is connected to a notebook that supports DP Alternate Mode, if **Auto Select for USB-C** is enabled, the following message appears:



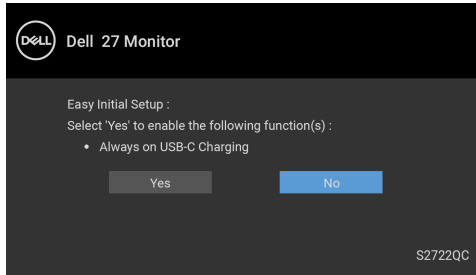
When **USB-C Prioritization** is set to **High Data Speed** by default, if **Factory Reset** is selected, the following message appears:



When **USB-C Prioritization** is set to **High Resolution**, if **Factory Reset** is selected, the following message appears:



When **Yes** is selected, the following message appears:



See [Troubleshooting](#) for more information.



## Setting the maximum resolution

 **NOTE: The steps may vary slightly depending on the version of Windows you have.**

To set the maximum resolution for the monitor:

In Windows<sup>®</sup> 7, Windows<sup>®</sup> 8, and Windows<sup>®</sup> 8.1:

1. For Windows<sup>®</sup> 8 and Windows<sup>®</sup> 8.1 only, select the Desktop tile to switch to classic desktop.
2. Right-click on the desktop and click **Screen resolution**.
3. If you have more than 1 monitor connected, ensure to select **S2722QC**.
4. Click the dropdown list of the **Screen resolution** and select **3840 x 2160**.
5. Click **OK**.

In Windows<sup>®</sup> 10:

1. Right-click on the desktop and click **Display settings**.
2. If you have more than 1 monitor connected, ensure to select **S2722QC**.
3. Click the dropdown list of **Resolution** and select **3840 x 2160**.
4. Click **Keep changes**.

If you do not see 3840 x 2160 as an option, you may need to update your graphics driver. Depending on your computer, complete one of the following procedures:

If you have a Dell desktop or portable computer:

- Go to <https://www.dell.com/support>, enter your service tag, and download the latest driver for your graphics card.

If you are using a non-Dell computer (portable or desktop):

- Go to the support site for your computer and download the latest graphic drivers.
- Go to your graphics card website and download the latest graphic drivers.




## Requirements to view or playback HDR content

### (1) Through Ultra BluRay DVD or Game consoles

Ensure the DVD player or Game console is HDR capable, such as Panasonic DMP-UB900, Xbox One S, and PS4 Pro.

### (2) Through a PC

Ensure the graphics card used is HDR capable, i.e., it has a HDMI2.0a (with HDR option) compliant port and HDR graphics driver is installed. HDR capable application program must be used, such as Cyberlink PowerDVD 17, Windows 10 Movies & TV app.

 **NOTE: To download and install the latest graphics driver that supports HDR content playback on your Dell desktop or laptop, see <https://www.dell.com/support/drivers>.**

#### NVIDIA

For a full range of HDR capable NVIDIA graphics cards, see [www.nvidia.com](http://www.nvidia.com).

Ensure to download driver that supports Full Screen Playback mode (e.g. PC games, UltraBluRay players), HDR on Win 10 Redstone 2 OS: 381.65 or later.

#### AMD

For a full range of HDR capable AMD graphics cards, see [www.amd.com](http://www.amd.com). Read the HDR driver support information and download the latest driver.


#### Intel (Integrated Graphics)

HDR capable processor: CannonLake or later

Suitable HDR player: Windows 10 Movies & TV app

Operating System (OS) with HDR support: Windows 10 Redstone 3

Driver with HDR support: see [downloadcenter.intel.com](http://downloadcenter.intel.com) for the latest HDR driver

 **NOTE: HDR playback through OS (e.g. playback of HDR in a window within desktop) requires Windows 10 Redstone 2 or later with appropriate application program such as PowerDVD 17. Playing back protected content will require appropriate DRM software and/or hardware, e.g. Microsoft Playready™. For support information, see <https://www.support.microsoft.com>.**

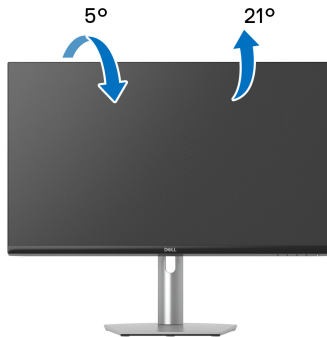


## Using the tilt, swivel, and vertical extension

**NOTE:** The following instructions are applicable only for attaching the stand that was shipped with your monitor. If you are attaching a stand that you purchased from any other source, follow the setup instructions that were included with the stand.

With the stand attached to the monitor, you can adjust the monitor for the most comfortable viewing angle.

### Tilt



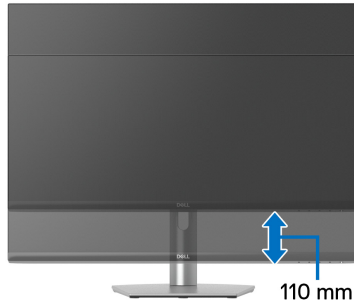
**NOTE:** The stand is not installed at the factory when shipped.

### Swivel



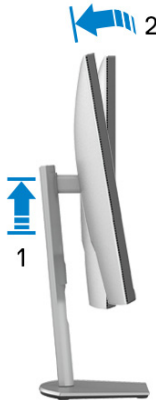
## Vertical extension

 **NOTE:** The stand extends vertically up to 110 mm. The figure below illustrates how to extend the stand vertically.



## Rotating the display

Before you rotate the display, ensure it is completely extended vertically and completely tilted up to avoid hitting the bottom edge of the monitor.





## Rotate clockwise



## Rotate counterclockwise



-  **NOTE:** To use the Display Rotation function (Landscape versus Portrait view) with your Dell computer, you require an updated graphics driver that is not included with this monitor. To download the graphics driver, go to [www.dell.com/support](http://www.dell.com/support) and see the Download section for Video Drivers for latest driver updates.
-  **NOTE:** In the Portrait mode, you may experience performance degradation when using graphic-intensive applications, such as 3D gaming.






## Adjusting the rotation display settings of your system

After you have rotated your monitor, you need to complete the procedure below to adjust the Rotation Display Settings of your system.

 **NOTE: If you are using the monitor with a non-Dell computer, you need to go to the graphics driver website or your computer manufacturer website for information on rotating the 'contents' on your display.**

To adjust the Rotation Display Settings:

1. Right-click on the desktop and click **Properties**.
2. Select the **Settings** tab and click **Advanced**.
3. If you have an ATI graphics card, select the **Rotation** tab and set the preferred rotation.
4. If you have an NVIDIA graphics card, click the **NVIDIA** tab, in the left-hand column select **NVRotate**, and then select the preferred rotation.
5. If you have an Intel<sup>®</sup> graphics card, select the **Intel** graphics tab, click **Graphic Properties**, select the **Rotation** tab, and then set the preferred rotation.

 **NOTE: If you do not see the rotation option or it is not working correctly, go to [www.dell.com/support](http://www.dell.com/support) and download the latest driver for your graphics card.**



# Troubleshooting

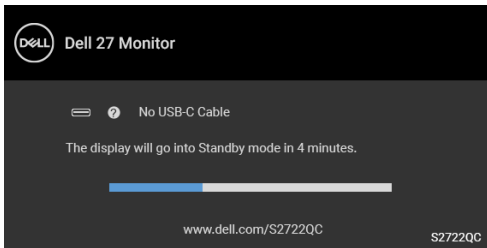
**⚠ WARNING:** Before you begin any of the procedures in this section, follow the [Safety instructions](#).

## Self-test

Your monitor provides a self-test feature that allows you to check whether your monitor is functioning properly. If your monitor and computer are properly connected but the monitor screen remains dark, run the monitor self-test by performing the following steps:

1. Turn Off both your computer and the monitor.
2. Unplug the video cable from the computer.
3. Turn On the monitor.

The floating dialog box should appear on-screen (against a black background), if the monitor cannot sense a video signal and is working correctly. While in self-test mode, the power LED remains white.



**📌 NOTE:** The message may slightly differ, depending on the connected input signal.

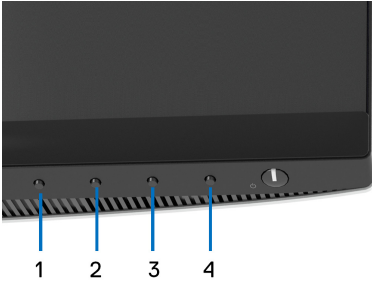
4. This box also appears during normal system operation, if the video cable becomes disconnected or damaged.
5. Turn Off your monitor and reconnect the video cable; then turn On both your computer and the monitor.

If your monitor screen remains blank after you perform the previous procedure, check your video controller and computer, because your monitor is functioning properly.




## Built-in diagnostics

Your monitor has a built-in diagnostic tool that helps you determine if the screen abnormality you are experiencing is an inherent problem with your monitor, or with your computer and video card.



To run the built-in diagnostics:

1. Ensure that the screen is clean (no dust particles on the surface of the screen).
2. Press and hold **Button 4** for about 4 seconds until a pop menu appears.
3. Use **Button 1** or **Button 2** to select the diagnostic tool  and use **Button 3** to confirm. A gray test pattern appears at the beginning of the diagnostic program.
4. Carefully inspect the screen for abnormalities.
5. Press **Button 1** again to change the test patterns.
6. Repeat steps 4 and 5 to inspect the display in red, green, blue, black, white, and text screens.
7. Press **Button 1** to end the diagnostic program.



## Common problems

The following table contains general information about common monitor problems you might encounter and the possible solutions:

Common symptoms	What you experience	Possible solutions
No Video/Power LED off	No picture	<ul style="list-style-type: none"><li>• Ensure that the video cable connecting the monitor and the computer is properly connected and secure.</li><li>• Verify that the power outlet is functioning properly using any other electrical equipment.</li><li>• Ensure that the power button is pressed fully.</li><li>• Ensure that the correct input source is selected in the <a href="#">Input Source</a> menu.</li></ul>
No Video/Power LED on	No picture or no brightness	<ul style="list-style-type: none"><li>• Increase the brightness and contrast controls via OSD.</li><li>• Invoke the self-test feature (see <a href="#">Self-test</a>).</li><li>• Check for bent or broken pins in the video cable connector.</li><li>• Run the built-in diagnostics.</li><li>• Ensure that the correct input source is selected in the <a href="#">Input Source</a> menu.</li></ul>
Poor Focus	Picture is fuzzy, blurry, or ghosting	<ul style="list-style-type: none"><li>• Eliminate video extension cables.</li><li>• Reset the monitor to factory settings.</li><li>• Change the video resolution to the correct aspect ratio.</li></ul>
Shaky/Jittery Video	Wavy picture or fine movement	<ul style="list-style-type: none"><li>• Reset the monitor to factory settings.</li><li>• Check environmental factors.</li><li>• Relocate the monitor and test it in another room.</li></ul>



Missing Pixels	LCD screen has spots	<ul style="list-style-type: none"> <li>• Turn the monitor off and then on again.</li> <li>• Pixel that is permanently off is a natural defect that can occur in LCD technology.</li> <li>• For more information on Dell Monitor Quality and Pixel Policy, see Dell support site at: <a href="http://www.dell.com/pixelguidelines">www.dell.com/pixelguidelines</a>.</li> </ul>
Stuck-on Pixels	LCD screen has bright spots	<ul style="list-style-type: none"> <li>• Turn the monitor off and then on again.</li> <li>• Pixel that is permanently off is a natural defect that can occur in LCD technology.</li> <li>• For more information on Dell Monitor Quality and Pixel Policy, see Dell support site at: <a href="http://www.dell.com/pixelguidelines">www.dell.com/pixelguidelines</a>.</li> </ul>
Brightness Problems	Picture too dim or too bright	<ul style="list-style-type: none"> <li>• Reset the monitor to factory settings.</li> <li>• Adjust brightness and contrast controls via OSD.</li> </ul>
Geometric Distortion	Screen not centered correctly	Reset the monitor to factory settings.
Horizontal/Vertical Lines	Screen has one or more lines	<ul style="list-style-type: none"> <li>• Reset the monitor to factory settings.</li> <li>• Invoke the self-test feature (see <a href="#">Self-test</a>) and determine if these lines are also flagged in the self-test mode.</li> <li>• Check for bent or broken pins in the video cable connector.</li> <li>• Run the built-in diagnostics.</li> </ul>



Synchronization Problems	Screen is scrambled or appears torn	<ul style="list-style-type: none"> <li>Reset the monitor to factory settings.</li> <li>Invoke the self-test feature (see <a href="#">Self-test</a>) and determine if these lines are also flagged in the self-test mode.</li> <li>Check for bent or broken pins in the video cable connector.</li> <li>Restart the computer in the safe mode.</li> </ul>
Safety Related Issues	Visible signs of smoke or sparks	<ul style="list-style-type: none"> <li>Do not perform any troubleshooting steps.</li> <li>Contact Dell immediately.</li> </ul>
Intermittent Problems	Monitor malfunctions on and off	<ul style="list-style-type: none"> <li>Ensure that the video cable connecting the monitor to the computer is connected properly and is secure.</li> <li>Reset the monitor to factory settings.</li> <li>Invoke the self-test feature (see <a href="#">Self-test</a>) and determine if these lines are also flagged in the self-test mode.</li> </ul>
Missing Color	Picture missing color	<ul style="list-style-type: none"> <li>Perform monitor self-test feature check.</li> <li>Ensure that the video cable connecting the monitor to the computer is connected properly and is secure.</li> <li>Check for bent or broken pins in the video cable connector.</li> </ul>
Wrong Color	Picture color not good	<ul style="list-style-type: none"> <li>Change the settings of the <b>Preset Modes</b> in the <b>Color</b> menu OSD depending on the application.</li> <li>Adjust R/G/B value under <b>Custom Color</b> in the <b>Color</b> menu OSD.</li> <li>Change the <b>Input Color Format</b> to <b>RGB</b> or <b>YCbCr/YPbPr</b> in the <b>Color</b> settings OSD.</li> <li>Run the built-in diagnostics.</li> </ul>



Image retention from a static image left on the monitor for a long period of time	Faint shadow from the static image displayed appears on the screen	<ul style="list-style-type: none"> <li>Set the screen to turn off after a few minutes of screen idle time. These can be adjusted in Windows Power Options or Mac Energy Saver setting.</li> <li>Alternatively, use a dynamically changing screensaver.</li> </ul>
---	--	---

## Product specific problems

Common symptoms	What you experience	Possible solutions
Screen image is too small	Image is centered on screen, but does not fill entire viewing area	<ul style="list-style-type: none"> <li>Check the <b>Aspect Ratio</b> setting in the <b>Display</b> menu OSD.</li> <li>Reset the monitor to factory settings.</li> </ul>
Cannot adjust the monitor with the buttons on the front panel	OSD does not appear on the screen	<ul style="list-style-type: none"> <li>Turn Off the monitor, unplug the power cord, plug it back, and then turn On the monitor.</li> <li>The OSD menu may be locked. Press and hold the Menu/function button next to the Power button for 4 seconds to unlock (for more information, see <a href="#">Lock</a>).</li> </ul>
No input signal when user controls are pressed	No picture, the LED light is white	<ul style="list-style-type: none"> <li>Check the signal source. Ensure the computer is not in the power saving mode by moving the mouse or pressing any key on the keyboard.</li> <li>Check whether the signal cable is plugged in properly. Re-plug the signal cable if necessary.</li> <li>Reset the computer or video player.</li> </ul>
The picture does not fill the entire screen	The picture cannot fill the height or width of the screen	<ul style="list-style-type: none"> <li>Due to different video formats (aspect ratio) of DVDs, the monitor may display in full screen.</li> <li>Run the built-in diagnostics.</li> </ul>



No video at HDMI/USB Type-C port	When connected to some dongle/docking device at the port, there is no video when unplugging/plugging the cable from the notebook	Unplug the HDMI/USB Type-C cable from dongle/docking device, then plug the docking HDMI/USB Type-C cable to the notebook.
----------------------------------	--	---

## Universal Serial Bus (USB) specific problems

Common symptoms	What you experience	Possible solutions
USB interface is not working	USB peripherals are not working	<ul style="list-style-type: none"> <li>• Check that your monitor is turned On.</li> <li>• Reconnect the upstream cable to your computer.</li> <li>• Reconnect the USB peripherals (downstream connector).</li> <li>• Turn the monitor off and then on again.</li> <li>• Reboot the computer.</li> <li>• Some USB devices like external portable HDD require higher electric current; connect the device directly to the computer system.</li> </ul>
USB Type-C port does not supply power	USB peripherals can not be charged	<ul style="list-style-type: none"> <li>• Check that the connected device is compliant with the USB-C specification. The USB Type-C port supports USB 3.2 Gen 1 and an output of 65 W.</li> <li>• Check that you use the USB Type-C cable shipped with your monitor.</li> </ul>





SuperSpeed USB 5 Gbps (USB 3.2 Gen 1) interface is slow	SuperSpeed USB 5 Gbps (USB 3.2 Gen 1) peripherals working slowly or not working at all	<ul style="list-style-type: none"> <li>• Check that your computer is SuperSpeed USB 10 Gbps (USB 3.2 Gen 1)-compatible.</li> <li>• Some computers have USB 3.2, USB 2.0, and USB 1.1 ports. Ensure that the correct USB port is used.</li> <li>• Reconnect the upstream cable to your computer.</li> <li>• Reconnect the USB peripherals (downstream connector).</li> <li>• Reboot the computer.</li> </ul>
Wireless USB peripherals stop working when a USB 3.2 device is plugged in	Wireless USB peripherals responding slowly or only working as the distance between itself and its receiver decreases	<ul style="list-style-type: none"> <li>• Increase the distance between the USB 3.2 peripherals and the wireless USB receiver.</li> <li>• Position your wireless USB receiver as close as possible to the wireless USB peripherals.</li> <li>• Use a USB-extender cable to position the wireless USB receiver as far away as possible from the USB 3.2 port.</li> </ul>

## Speakers Specific Problems

Common symptoms	What you experience	Possible solutions
No sound coming from the speakers	Cannot hear any sound	<ul style="list-style-type: none"> <li>• Turn Off the monitor, unplug the monitor power cord, replug it, and then turn On the monitor.</li> <li>• Check the audio cable connection is connected correctly to the audio line-out port of the computer.</li> <li>• Unplug the audio cable from the audio line-out port.</li> <li>• Reset the monitor to factory settings.</li> </ul>



# Appendix

## **WARNING: Safety instructions**

 **WARNING: Use of controls, adjustments, or procedures other than those specified in this documentation may result in exposure to shock, electrical hazards, and/or mechanical hazards.**

For information on safety instructions, see Safety, Environmental, and Regulatory Information (SERI).

## **FCC notices (U.S. only) and other regulatory information**

For FCC notices and other regulatory information, see the regulatory compliance website located at [www.dell.com/regulatory\\_compliance](http://www.dell.com/regulatory_compliance).

## **Contact Dell**

For customers in the United States, call 800-WWW-DELL (800-999-3355).

 **NOTE: If you do not have an active Internet connection, you can find contact information on your purchase invoice, packing slip, bill, or Dell product catalog.**

**Dell provides several online and telephone-based support and service options. Availability varies by country and product, and some services may not be available in your area.**

- Online technical assistance — [www.dell.com/support/monitors](http://www.dell.com/support/monitors)
- Contacting Dell — [www.dell.com/contactdell](http://www.dell.com/contactdell)

## **EU product database for energy label and product information sheet**

S2722QC: <https://eprel.ec.europa.eu/qr/704920>



## Free Manuals Download Website

<http://myh66.com>

<http://usermanuals.us>

<http://www.somanuals.com>

<http://www.4manuals.cc>

<http://www.manual-lib.com>

<http://www.404manual.com>

<http://www.luxmanual.com>

<http://aubethermostatmanual.com>

Golf course search by state

<http://golfingnear.com>

Email search by domain

<http://emailbydomain.com>

Auto manuals search

<http://auto.somanuals.com>

TV manuals search

<http://tv.somanuals.com>