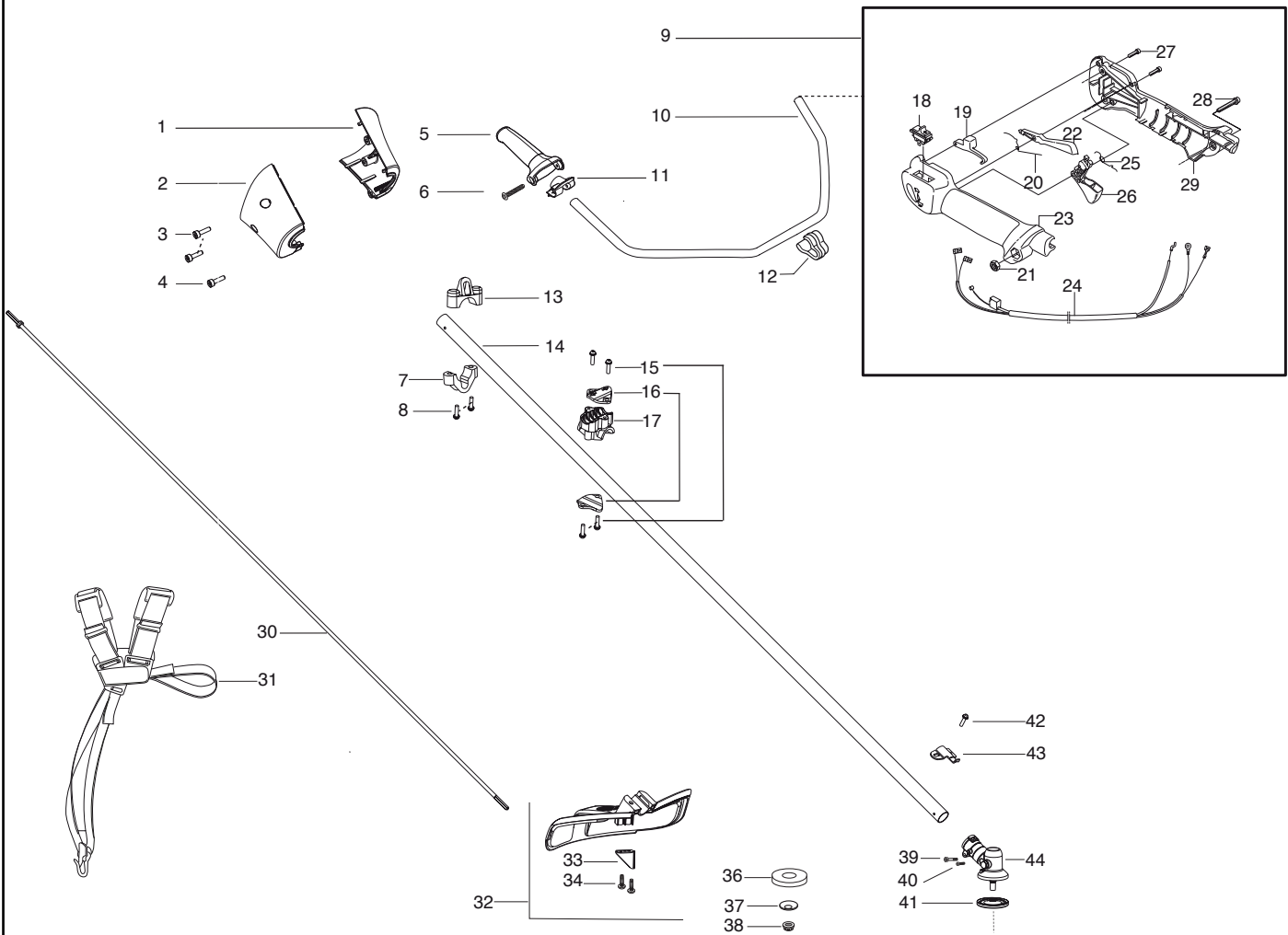


# 125R

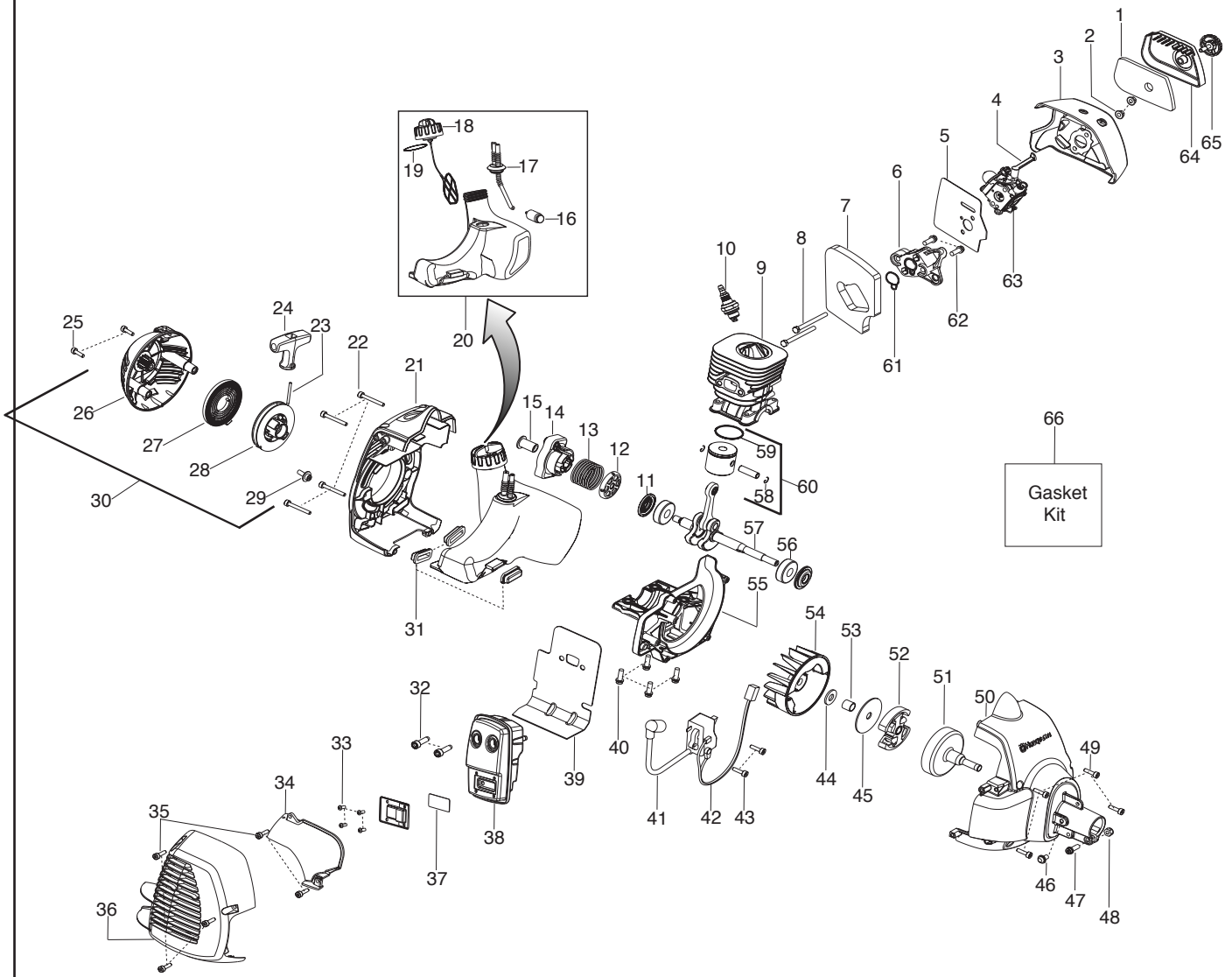
**Spare parts**  
**Ersatzteile**  
**Pièces détachées**  
**Reserve onderdelen**  
**Repuestos**  
**Reservdelar**

# A



Ref.	Part No.	Description	Ref.	Part No.	Description	Ref.	Part No.	Description
1.	545 03 64-01	Nose Cone - LH	24.	545 05 62-01	Assy - Cable Wire	<b>Not Shown</b>		
2.	545 03 65-01	Nose Cone - RH	25.	537 17 42-01	Spring - Trigger			
3.	530 01 64-48	Screw	26.	537 16 08-01	Trigger - Throttle			
4.	530 01 64-49	Screw	27.	503 21 66-18	Screw			
5.	503 72 10-03	Handle-Assist	28.	503 20 07-35	Screw			
6.	503 21 07-45	Bolt	29.	537 16 03-01	Housing-Throttle - RH			
7.	545 05 66-01	Clamp-Harness (lower)	30.	545 00 75-07	Flexshaft			
8.	530 01 59-40	Screw	31.	537 21 63-01	Harness w/o warning			
9.	545 06 71-01	Assy-Throttle Housing (Incl. 18,19,20,21,22,23, 24,25,26,27,28,29)	32.	545 03 09-01	Kit-Shield (Incl. 33,34)			
10.	502 19 95-03	Handlebar	33.	530 05 22-86	Limitter - Line			
11.	503 80 45-01	Cover-Assist Handle	34.	530 01 58-14	Screw			
12.	502 21 12-01	Clip-Handlebar	36.	503 89 01-01	Cup-Support			
13.	530 05 79-86	Clamp-Harness (upper)	37.	537 28 56-01	Support - Flange			
14.	545 08 10-11	Kit-Driveshaft	38.	503 85 63-01	Locknut - Blade			
15.	530 01 58-14	Screw	39.	530 01 60-14	Screw			
16.	530 05 85-63	Clamp - Bracket	40.	530 01 63-01	Screw			
17.	545 05 85-01	Clamp 1" Handlebar	41.	537 23 49-01	Assy - Dustcup			
18.	545 03 06-01	Kit-Switch	42.	530 01 57-71	Screw			
19.	537 16 07-01	Lockout-Starter Throttle	43.	530 05 75-54	Bracket - Shield			
20.	537 17 43-01	Spring - Lockout	44.	530 09 62-95	Assy - Gearbox			
21.	503 22 10-13	Nut						
22.	537 16 06-01	Lockout - Throttle						
23.	537 16 02-03	Housing - Throttle -LH						
								Manual (Euro 7)
								(Euro 8)
								(Euro 9)
								Decal-Warning
								Guard - Transport
								Wrench-Hex
								Wrench-Spark Plug
								O-Ring (Shoulder Strap)

# B



Ref.	Part No.	Description	Ref.	Part No.	Description	Ref.	Part No.	Description
1.	530 15 02-53	Filter	25.	530 01 64-26	Screw	48.	530 40 30-94	Nut
2.	530 01 61-01	Nut-Carb. Screw	26.	545 02 96-02	Starter Hsg. w/eyelet	49.	530 01 64-56	Screw
3.	545 08 46-01	Air Box	27.	545 02 98-01	Kit-Starter Spring	50.	545 01 75-01	Assy-Fan Housing
4.	530 05 78-44	Lever - Choke	28.	545 02 97-01	Kit-Starter Pulley	51.	530 15 00-39	Assy-Clutch Drum
5.	545 05 04-02	Kit-Carb. Gasket (Incl 7,61)	29.	530 01 64-68	Screw	52.	545 05 04-05	Kit-Clutch Assy.
6.	530 03 55-96	Adaptor-Carb.	30.	545 10 63-01	Assy-Starter Hsg.(Incl. 23,24,26,27,28,29)	53.	530 05 78-52	Spacer
7.	545 03 01-01	Kit-Gasket (foam)	31.	530 05 97-80	Isolator-Tank	54.	530 03 92-42	Flywheel
8.	530 01 64-00	Bolt	32.	530 05 89-82	Bolt-Muffler	55.	545 05 46-01	Crankcase
9.	545 00 10-01	Cylinder	33.	530 01 54-96	Screw	56.	545 01 34-01	Bearing
10.	952 03 02-01	Plug-Spark (RCJ-8Y)	34.	530 15 04-40	Shield-Heat	57.	545 03 00-01	Kit-Crankshaft
11.	545 05 04-03	Kit-Crankshaft seal	35.	530 01 64-49	Screw	58.	530 01 51-62	Retainer-Piston Pin
12.	530 01 64-75	Washer-Starter	36.	530 05 97-84	Guard-Muffler	59.	530 01 92-83	Ring-Piston
13.	530 01 64-50	Spring-Starter Cup	37.	545 03 05-01	Kit-Spark Arrestor (Incl. 33)	60.	545 03 03-01	Kit-Piston (Incl. 58,59)
14.	545 10 23-02	Assy-Starter Cup	38.	545 05 75-02	Assy-Muffler	61.	545 03 01-01	Kit-Gasket (adaptor seal)
15.	530 05 98-00	Coupling-Starter	39.	530 05 78-48	Gasket-Paper Metal	62.	530 01 58-97	Screw
16.	530 09 56-46	Assy-Fuel Filter	40.	530 01 58-97	Screw	63.	545 00 60-34	Kit-Carb. (Incl. 4,5)
17.	545 03 02-01	Kit-Fuel Line	41.	545 04 67-01	Module	64.	530 05 78-46	Cover-Air Box
18.	530 15 03-50	O-ring - Fuel Cap	42.	530 03 92-27	Assy-Leadwire	65.	530 05 97-96	Assy-Knob
19.	530 01 92-93	O-ring - Fuel Cap	43.	530 01 64-56	Screw	66.	545 03 01-01	Kit-Gasket (Incl. 5,7,11,19,39,61)
20.	530 05 78-53	Assy-Fuel Tank (Incl. 16,17,18,19)	44.	530 01 60-30	Washer			
21.	530 05 78-51	Shroud-Rear	45.	530 09 41-89	Washer-Clutch			
22.	530 01 64-48	Screw	46.	530 01 64-69	Screw			
23.	545 02 99-01	Kit-Rope	47.	530 01 64-70	Screw			
24.	530 15 03-18	Handle-Starter						

<b>Not Shown</b>
530 05 87-09      Bulb-Purge

## Free Manuals Download Website

<http://myh66.com>

<http://usermanuals.us>

<http://www.somanuals.com>

<http://www.4manuals.cc>

<http://www.manual-lib.com>

<http://www.404manual.com>

<http://www.luxmanual.com>

<http://aubethermostatmanual.com>

Golf course search by state

<http://golfingnear.com>

Email search by domain

<http://emailbydomain.com>

Auto manuals search

<http://auto.somanuals.com>

TV manuals search

<http://tv.somanuals.com>